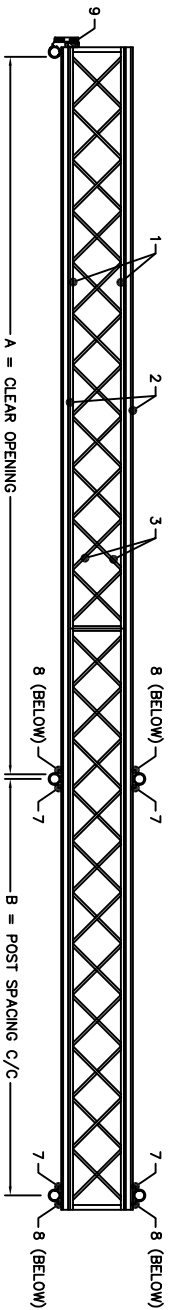
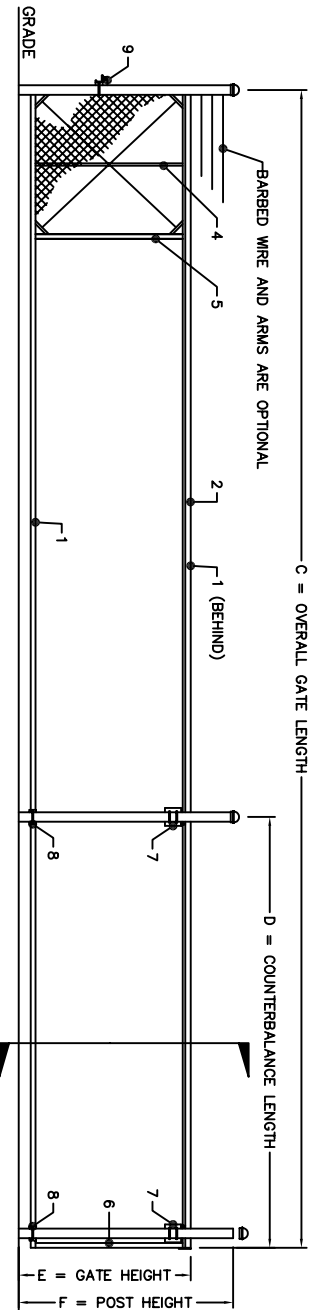


**CRITICAL DIMENSION CHART**

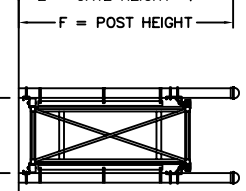
MARK	DESCRIPTION	FORMULA	DIM.
A	CLEAR OPENING	A	-
B	COUNTERBALANCE POST SPACING C/C	(A/2)-1"1"	-
C	OVERALL GATE LENGTH	A x 1.5	-
D	COUNTERBALANCE LENGTH	A x 0.5	-
E	NOMINAL GATE HEIGHT	E	-
F	POST HEIGHT (W BARB ARMS)	E + 1'-6"	-
G	FABRIC HEIGHT	E - 1'-0"	-



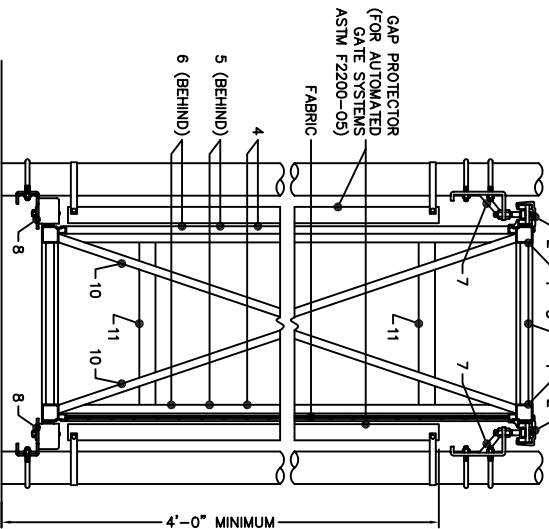
**PLAN VIEW**  
Scale: None



**ELEVATION**  
Scale: None

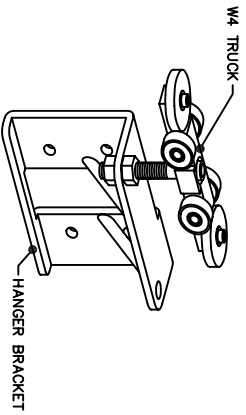


**SECTION**  
Scale: None

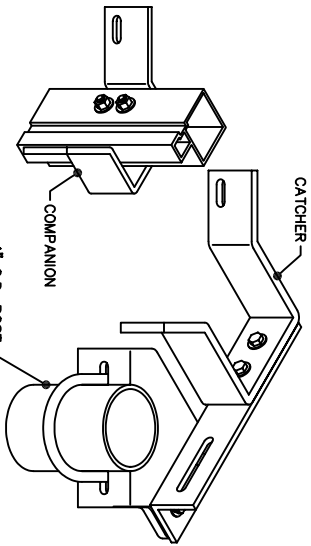


**ENLARGED SECTION**  
Scale: None

**7 GATE HANGER ASSEMBLY**  
Scale: None

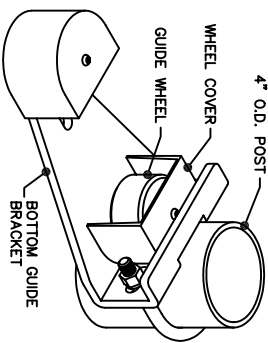


**9 CATCH ASSEMBLY**  
Scale: None



- NOTES:  
1. ALL FITTINGS STANDARDLY PROVIDED FOR 4" O.D. POSTS.  
OTHER SIZES AVAILABLE UPON REQUEST.  
2. BARB ARMS (FOR BARBED WIRE) OPTIONAL.

**8 BOTTOM GUIDE**  
Scale: None



**BOX FRAME CANTILEVER SLIDE GATE**

**BILL OF MATERIALS**

MARK	DESCRIPTION	NOTES:
1	STANDARD PRIMARY	
2	STANDARD TRACK	
3	1" x 1" ALUM. TUBE	LATERAL CROSS BRACING
4	1" x 1" ALUM. TUBE	CENTERED BETWEEN 1X2'S
5	1" x 2" ALUM. TUBE	TYP. AT ENDS OF GATE FRAME
6	2" x 2" ALUM. TUBE	4 REQUIRED
7	HANGER ASSEMBLY	4 REQUIRED
8	BOTTOM GUIDE ASSEMBLY	2 REQUIRED
9	CATCH ASSEMBLY	1 REQUIRED
10	1" x 1" ALUM. TUBE	INTERNAL DIAGONAL BRACING
11	2" x 2" ALUM. TUBE	END BRACING



2549 STATE ROUTE 40  
GREENWICH, N.Y. 12834  
PH: (800) 328-4283 - FX: (518) 892-9404  
www.tymetal.com