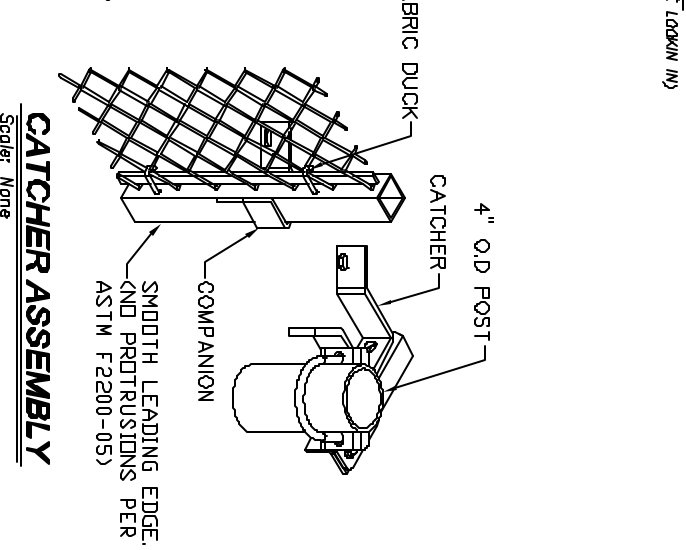
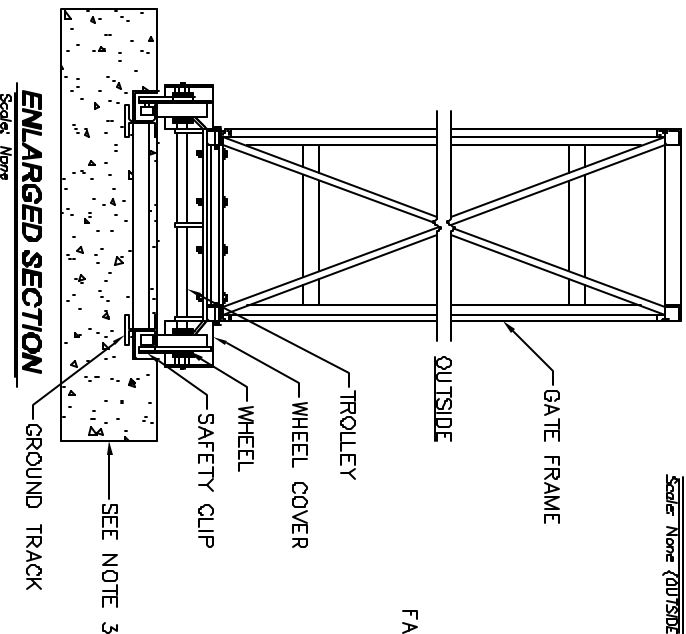
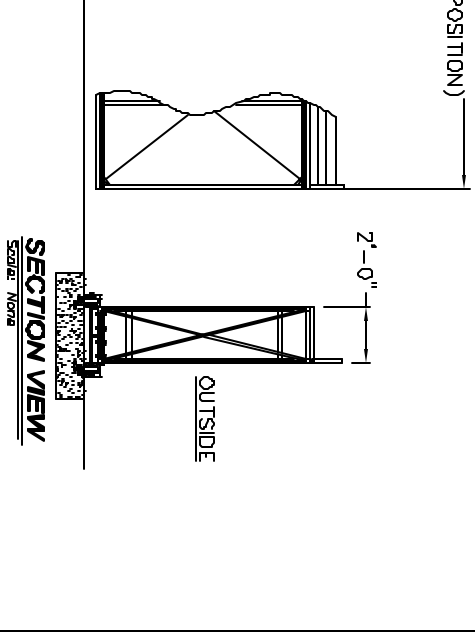
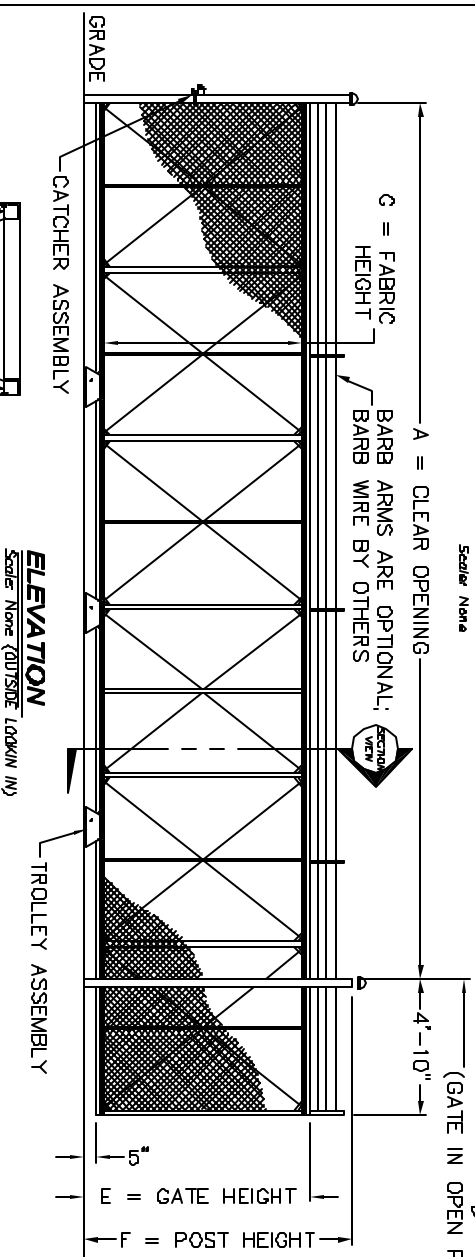


| CRITICAL DIMENSION CHART | |
|--------------------------|---|
| A | CLEAR OPENING |
| B | EMBEDMENT LENGTH (2 x A) - 13'-0" |
| C | PANEL LENGTH VARIES - SEE NOTE #2 |
| D | OVERALL GATE LENGTH A + 5'-0" |
| E | GATE HEIGHT |
| F | POST HEIGHT (WITH BARB ARMS) E + 1'-6" |
| G | FABRIC HEIGHT E - 1'-0" |



NOTE:
 1. EMBEDDED W4 X 13 I-BEAM TRACK SYSTEM PROVIDED BY OTHERS UNLESS OTHERWISE NOTED.

2. THE TOTAL NUMBER OF PANELS REQUIRED WILL VARY DEPENDING ON THE OVERALL GATE LENGTH AND WILL BE DETERMINED AS FOLLOWS: DIVIDE THE OVERALL GATE LENGTH BY 48 AND ROUND UP TO THE NEAREST WHOLE NUMBER.

3. CONCRETE FOOTING SHALL BE SIZED AS REQUIRED BY LOCAL ENGINEER IN ACCORDANCE WITH ALL JOB SPECIFICATIONS.

4. BARB ARMS ARE OPTIONAL; BARB WIRE BY OTHERS

2549 STATE ROUTE 40
 GREENWICH, N.Y. 12834
 PH: (800) 308-4283 - FX: (518) 992-9404
 www.tymetal.com

BOX FRAME ROLLER