

Positive Locking Sallyport System (PLUSS)



The Positive Locking Sallyport System (PLUSS), manufactured by Tymetal Corp, is the ultimate gate system for correctional vehicle access. The PLUS device is approved for use by most state and county agencies and meets the Federal Bureau of Prisons design- guidelines. The system is designed to minimize maintenance on applications requiring repetitive use.

The motor unit of the Positive Locking Ultimate Sallyport System is located at ground level to assure easy access during routine inspection. If manual operation is required, the operator motor box may be unlocked with our paracentric key and hand cranked. During manual operation the gear ratios are set so that the gate easily moves in synch with any manual cranking



Tymetal provides full electrical consoles including those required for remote applications utilizing multiple interlocking features.

Complete specifications for the system are available on request. When the order is received, we also include shop drawings, detailed product data sheets, certifications, operation and maintenance data and installation manuals with the system. Field quality control is available upon request as is a system acceptance test under the supervision of Tymetal's field advisor.

Technical Data:

Gate Sizes:

Standard gate clear opening width 10' –30 with 1' increments and 10' – 18' clear height with 1' increments

Electrical:

115, 120 VAC 60Hz, 1 Phase
208, 230, 460 VAC 60Hz, 3 Phase

Note: Tymetal inventories the ½ hp, 208 volt, three phase motor

Roller Chain: # 60 (will not stretch)

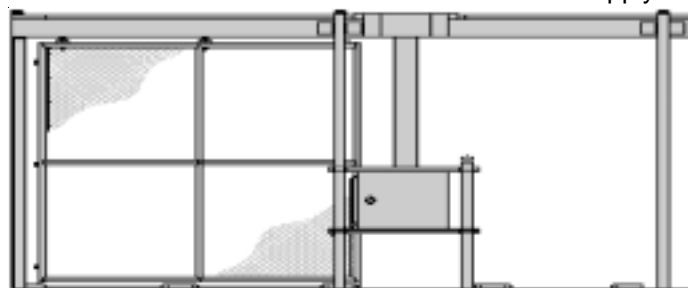
Motor box Housing: 10 gauge galvanized steel containing NEMA 4 electrical enclosure meeting the requirements of UL 508 and equipped with a 5 tumbler paracentric mechanical lock..

Control Wiring: 110 volt or 24 volt

Optional Features:

Custom gate openings
Six tumbler paracentric key locks
Special keying

Note: The optional features will increase lead-time. Also additional charges will apply depending on the application.



TYMETAL CORP.

A FORT MILLER GROUP COMPANY

WWW.TYMETAL.COM

TC-17 © September 2002

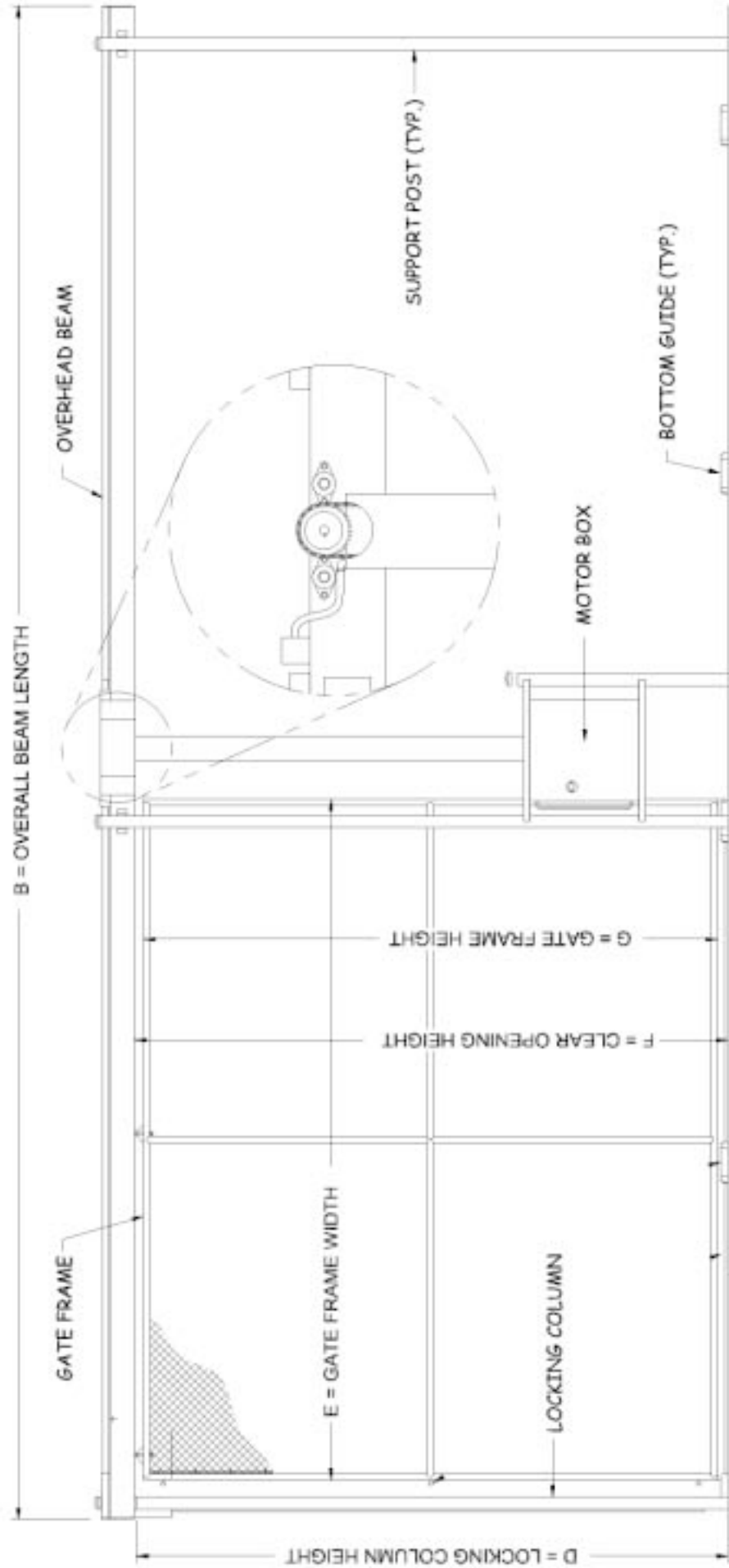
2566 State Route 40
Greenwich, NY 12834

1-800-328-GATE
(4283)

Fax 1-518-692-9404



PLAN VIEW



ELEVATION