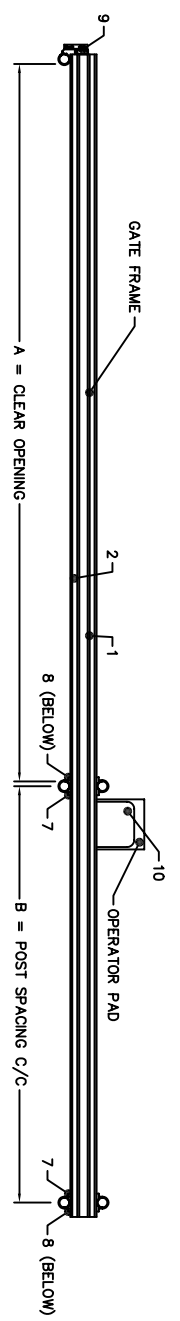
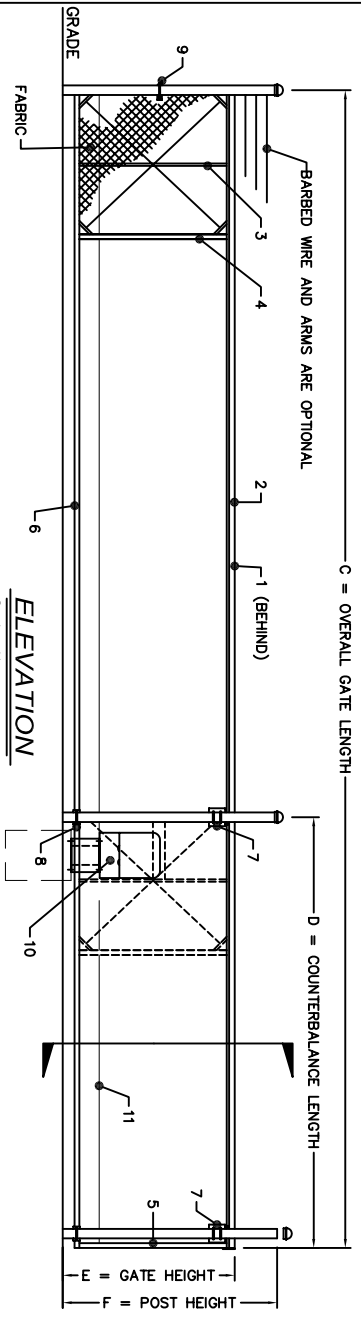


CRITICAL DIMENSION CHART			
MARK	DESCRIPTION	FORMULA	DIM.
A	CLEAR OPENING	A	-
B	COUNTERBALANCE POST SPACING C/C	(A/2)-11"	-
C	OVERALL GATE LENGTH	A x 1.5	-
D	COUNTERBALANCE LENGTH	A x 0.5	-
E	NOMINAL GATE HEIGHT	E	-
F	POST HEIGHT (W BARB ARMS)	E + 1'-6"	-
G	FABRIC HEIGHT	E - 1'-0"	-

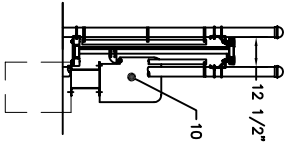
PLAN VIEW
Scale: None



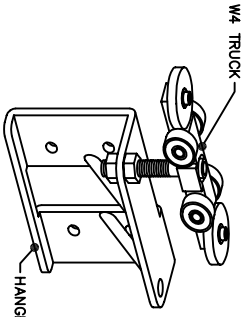
ELEVATION
Scale: None



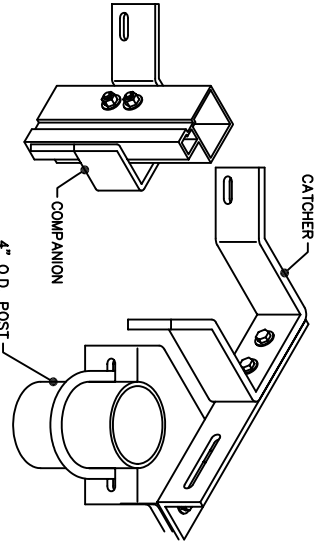
SECTION
Scale: None



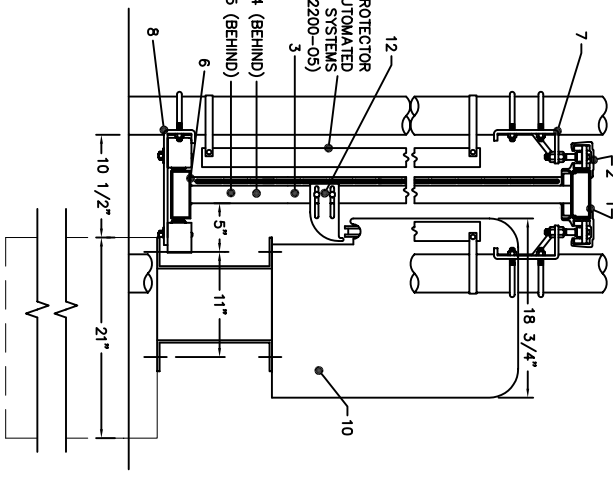
7 GATE HANGER ASSEMBLY
Scale: None



9 CATCH ASSEMBLY
Scale: None



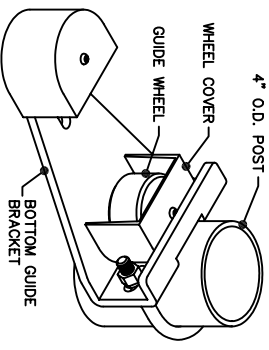
OPERATOR SIDE ELEVATION
Scale: None



TYM-2000 SECURITY GATE SYSTEM (WITH STRUCTURAL GATE)
Scale: None

BILL OF MATERIALS		
MARK	DESCRIPTION	NOTES
1	TOP PRIMARY MEMBER	
2	STANDARD TRACK	
3	1" x 2" ALUM. TUBE	CENTERED BETWEEN 2x2'S
4	2" x 2" ALUM. TUBE	
5	STANDARD PRIMARY	TOP, AT ENDS OF GATE FRAME
6	2" x 5" ALUM. TUBE	
7	HANGER ASSEMBLY	4 REQUIRED
8	BOTTOM GUIDE ASSEMBLY	2 REQUIRED
9	CATCH ASSEMBLY	1 REQUIRED
10	TYM-2000 GATE OPERATOR DRIVE CHAIN	
11	CHAIN SUPPORT BRACKET	
12	CHAIN SUPPORT BRACKET	AS REQUIRED

8 BOTTOM GUIDE
Scale: None



- NOTES:
1. FOR COMPLETE INFORMATION ON THE TYM-2000 OPERATORS VISIT THE "GATE OPERATORS" SECTION OF THE WEB SITE.
2. ALL FITTINGS STANDARDLY PROVIDED FOR 4" O.D. POSTS. OTHER SIZES AVAILABLE UPON REQUEST.
3. BARB ARMS (FOR BARBED WIRE) OPTIONAL.

2549 STATE ROUTE 40
GREENWICH, N.Y. 12834
PH: (800) 308-4283 - FX: (516) 892-9404
www.tymetal.com