

# FORTRESS BOX FRAME CANTILEVER SLIDE GATE

BY TYMETAL CORP.

The Fortress Box Frame Slide Gate, manufactured by Tymetal Corp., is a cantilever system designed to handle the forces of gravity and wind, using box frame construction and stainless steel cable. Diagonal cross members eliminate lateral sway while numerous design features necessary for single gates with widths up to 60 feet, 120 feet for doubles, address potential stresses on the gate.

Box Frame Gates are fabricated from 6063-T6 aluminum alloy extrusions with primary members (top and bottom) "P" shaped in the cross section. The vertical members alternate between 2"x 2" and 1"x 2" in cross section and are spaced at a distance not to exceed the overall height of the box frame. Constructed in "box" form, the width between the frames measures 24" from outside to outside.

Each frame has a track of extruded aluminum alloy welded to the primary member allowing the gate to operate smoothly. The gate frame is supported from the two tracks by four self-aligning, 4-wheeled, sealed lubricant ball bearing truck assemblies. The gate includes cross bracing of 3/16" minimum diameter stainless steel cable to provide for vertical adjustment.

For special applications with limited back space or larger openings, telescoping or roller box frame gates are also available.



Supporter and  
Proud Member of

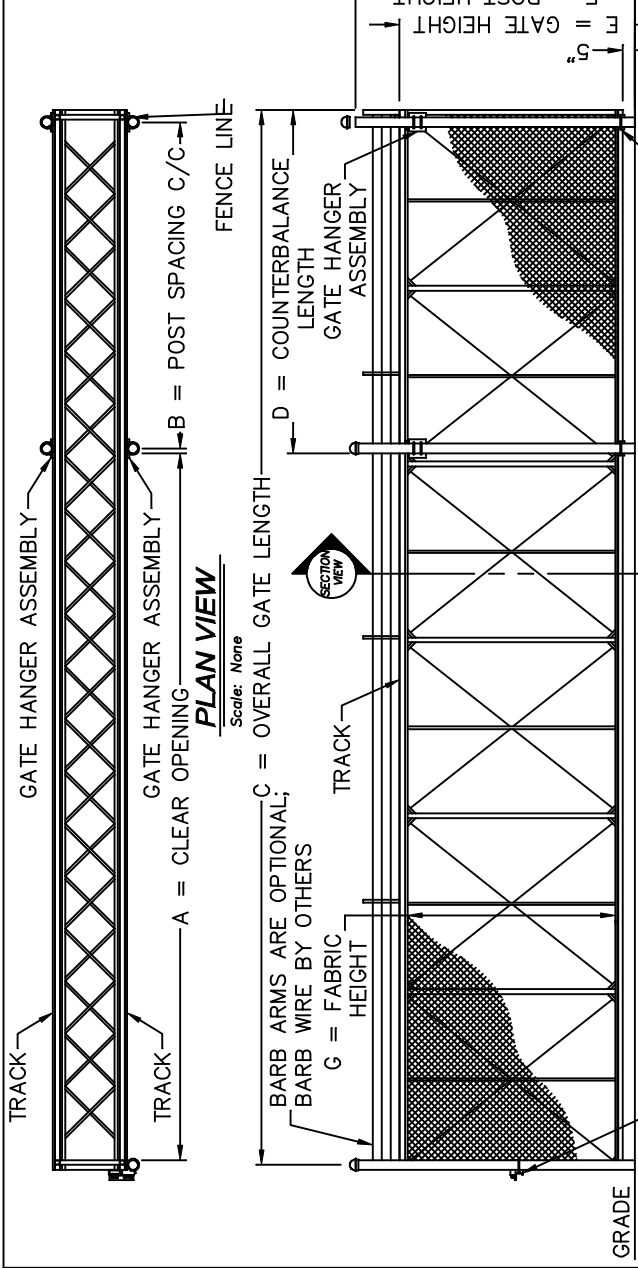


## Tymetal Corp.

(800) 328-GATE (4283) • [www.tymetal.com](http://www.tymetal.com)  
Greenwich, NY • Pearland, TX

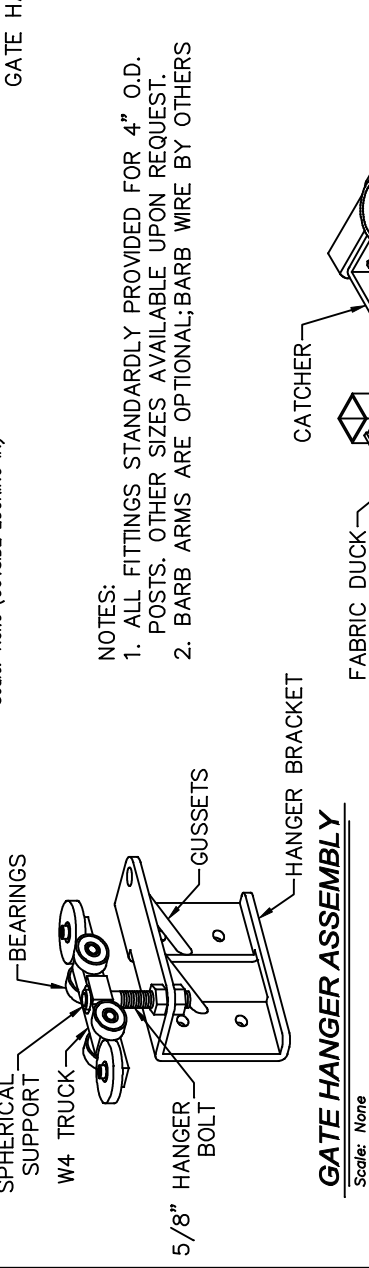


CRITICAL DIMENSION CHART			
MARK	DESCRIPTION	FORMULA	DIM.
A	CLEAR OPENING	A	-
B	COUNTERBALANCE POST SPACING C/C	(A/2)-11"	-
C	OVERALL GATE LENGTH	A x 1.5	-
D	COUNTERBALANCE LENGTH	A x 0.5	-
E	NOMINAL GATE HEIGHT	E	-
F	POST HEIGHT (W BARB ARMS)	E + 1'-6"	-
G	FABRIC HEIGHT	E - 1'-0"	-

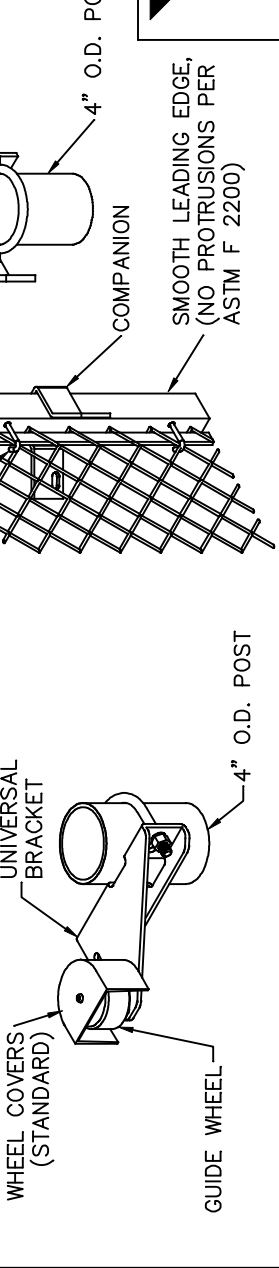


**PLAN VIEW**  
Scale: None

**ELEVATION**  
Scale: None (OUTSIDE LOOKING IN)

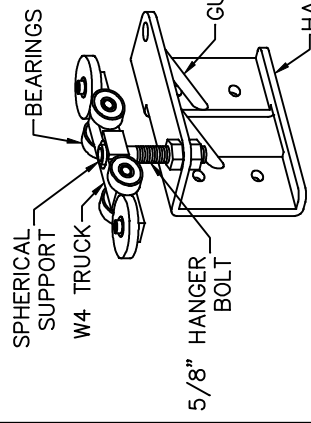


**SECTION**  
Scale: None

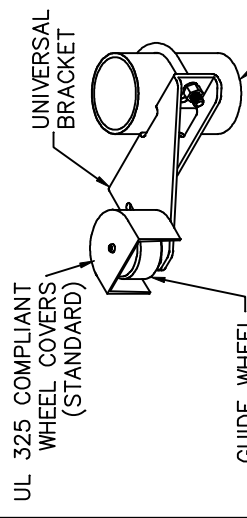


**ENLARGED SECTION**  
Scale: None

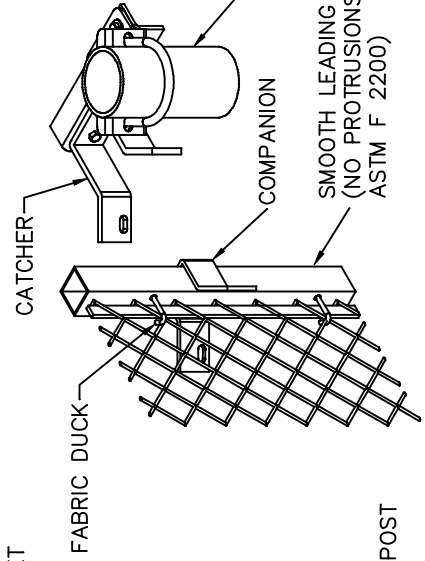
- NOTES:
1. ALL FITTINGS STANDARDLY PROVIDED FOR 4" O.D. POSTS. OTHER SIZES AVAILABLE UPON REQUEST.
  2. BARB ARMS ARE OPTIONAL; BARB WIRE BY OTHERS



**GATE HANGER ASSEMBLY**  
Scale: None



**BOX FRAME BOTTOM GUIDE**  
Scale: None



**CATCHER ASSEMBLY**  
Scale: None

**Tymetal Corp.**  
www.tymetal.com

2549 STATE ROUTE 40  
GREENWICH, N.Y. 12834  
PH: (800) 328-4283 - FX (518) 692-9404

**BOX FRAME CANTILEVER SLIDE GATE**