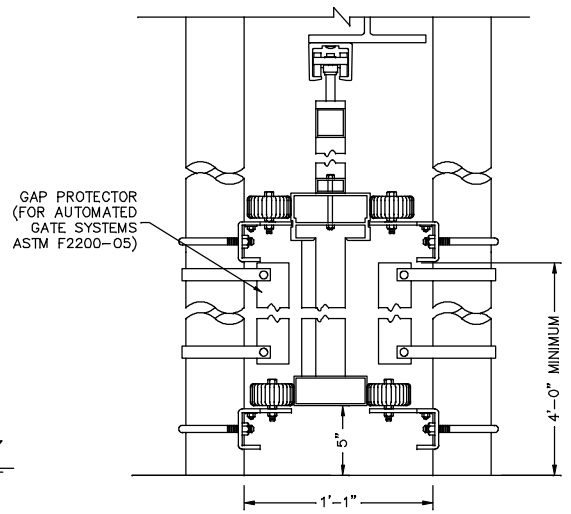
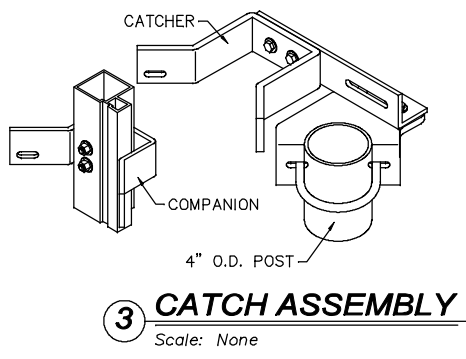
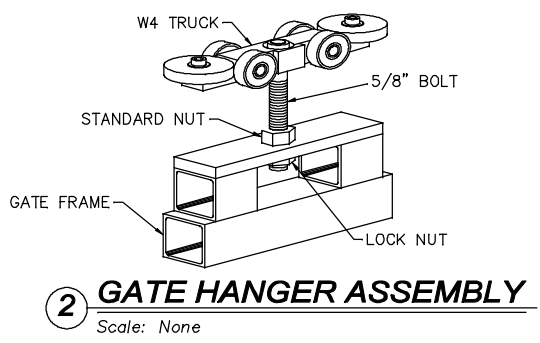
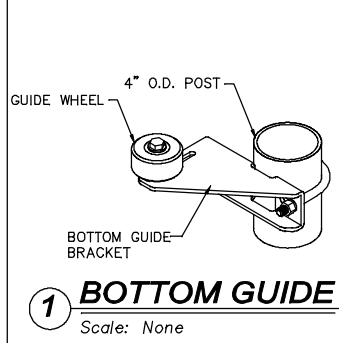
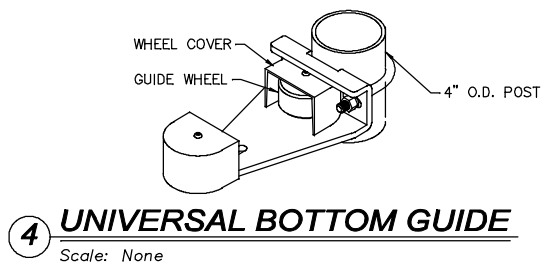


| CRITICAL DIMENSION CHART | | | |
|--------------------------|--------------------------|---------------|-----------|
| MARK | DESCRIPTION | FORMULA | DIMENSION |
| A | CLEAR OPENING | A | - |
| B | POST SPACING C/C | B | - |
| C | UPPER GATE FRAME WIDTH | A + 1'-4" | - |
| D | BOTTOM GATE FRAME WIDTH | A + 7' | - |
| E | GATE FRAME HEIGHT | F - 3" | - |
| F | LOWER FRAME HEIGHT | F | - |
| G | CLEAR OPENING HEIGHT | G | - |
| H | HEIGHT TO BOTTOM OF BEAM | H | - |
| I | POST HEIGHT | I | - |
| J | FABRIC HEIGHT | E - 1'-0" | - |
| K | OVERALL BEAM LENGTH | A X 2 + 1'-0" | - |



- NOTES:**
1. ALL FITTINGS STANDARDLY PROVIDED FOR 4" O.D. POSTS. OTHER SIZES AVAILABLE UPON REQUEST.
 2. BARB ARMS (FOR BARBED WIRE) OPTIONAL.
 3. HIGH WIND PACKAGE AVAILABLE. CONTACT MANUFACTURER RELATIVE TO HIGH WIND CONDITIONS.
 4. FOR IN-FILL MATERIALS OTHER THAN CHAIN LINK CONTACT MANUFACTURER.
 5. CLEAR OPENINGS (A) UP TO 40 FEET.



2549 STATE ROUTE 40
GREENWICH, N.Y. 12834

www.tymetal.com PH: (800) 328-4283 - FX: (518) 692-9404

HEAVY DUTY OVERHEAD SLIDE GATE