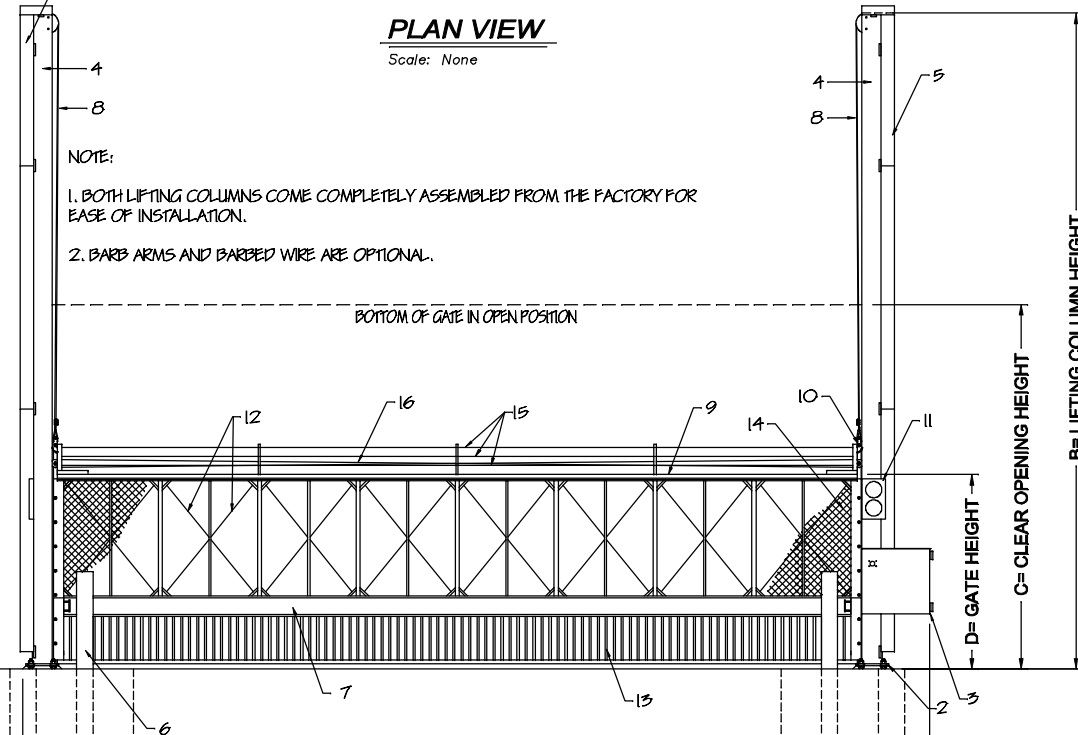


PLAN VIEW

Scale: None

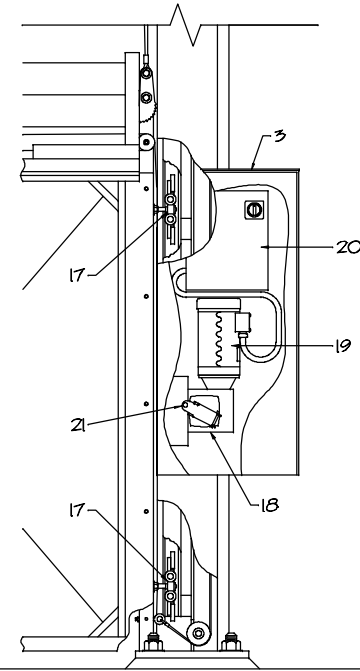
- NOTE:
1. BOTH LIFTING COLUMNS COME COMPLETELY ASSEMBLED FROM THE FACTORY FOR EASE OF INSTALLATION.
2. BARB ARMS AND BARBED WIRE ARE OPTIONAL.



ELEVATION

Scale: None

E = OVERALL UNIT WIDTH



DRIVE ASSEMBLY

Scale: None

REINFORCED VERTICAL LIFT GATE

COMPONENT REFERENCES

MARK	DESCRIPTION	NOTES:	MARK	DESCRIPTION	NOTES:
1	CONCRETE COLUMN FOOTING	PRE-ENGINEERED BY TYMETAL	12	3/16" S.S. CABLE	
2	LIFTING COLUMN BASE PLATE		13	1" x 1" PICKETS	
3	MOTOR BOX		14	IN FILL MATERIAL	AS REQUIRED BY OWNER
4	W12 x 63 LIFTING COLUMN	SEE NOTE #1	15	BARBED WIRE	SEE NOTE #2
5	W12 COLUMN COVER		16	ANTI-RACKING CABLES	2 REQUIRED
6	CONCRETE FILLED BOLLARDS		17	W4 TRUCK ASSEMBLY	4 REQUIRED
7	STEEL IMPACT BEAM		18	GEAR BOX	
8	PRIMARY LIFTING CABLE	TYP. AT ENDS OF GATE FRAME	19	MOTOR	
9	TOP PRIMARY MEMBER		20	CONTROLLER	
10	SAFETY CAM		21	CRANK HANDLE	FOR MANUAL OPERATION
11	TRAFFIC LIGHT				

CRITICAL DIMENSION CHART

MARK	DESCRIPTION	FORMULA	DIMENSION
A	CLEAR OPENING	A	-
B	LIFTING COLUMN HEIGHT	C + D + 4'-0"	-
C	CLEAR OPENING HEIGHT	C	-
D	NOMINAL GATE HEIGHT	D	-
E	OVERALL UNIT WIDTH	A + 3'-3"	-