

VERTICAL PIVOT GATE SYSTEMS BY TYMETAL CORP.

- 1/3 HP continuous-duty motor
- Battery Back-up
- 120V AC (15 AMP) supply, 24V DC powered

COMMON FEATURES

- Space Saving: Applicable where limited space is available
- Adaptable to most terrains
- 10-12 Second Operation: Prevents tailgating
- 24V C Reserve Power: 1000 + cycles from fully charged batteries (less when access controls are used) - Batteries not included
- Built-in battery container
- Clear openings up to 24 feet (doubles to 48 feet) - Contact manufacturer relative to larger opening sizes
- UL 325 Compliant for Class I, II, III, and IV
- APeX controller
- Photo eyes standard; warning beacon and siren optional
- Choice of detention quality locks
- Galvanized cover with corrosion resistant finish
- Available in Chain Link and Ornamental designs
- 5 year warranty



Tymetal Corp.

(800) 328-GATE (4283) • www.tymetal.com
Greenwich, NY • Pearland, TX

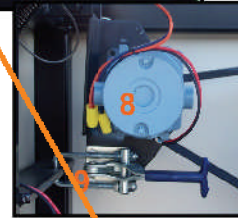
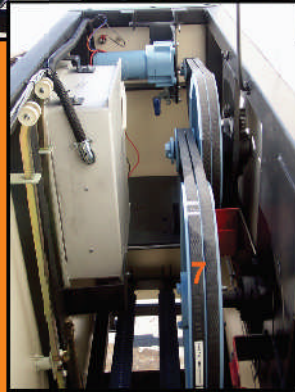
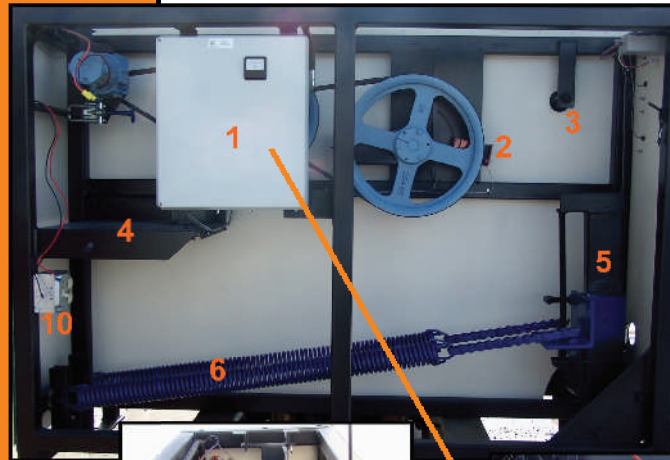
We Close  Openings

ELECTRICAL

- Open / Close Cycles: 10 - 12 seconds
- Delayed Closing: Adjustable from one second to 9 minutes
- APeX Controller
- Built-in AMP meter to monitor operator balance
- Control Wiring: 16 and 18 gauge single conductor, copper with electrolytic copper compression terminals, tin-plated for maximum corrosion prevention
- Built-in cycle counter
- Obstruction Sensor: Adjustable instant reverse device senses obstructions opening and closing
- 24V AC indicator light on front of operator indicates AC power is on

MECHANICAL

- 1/3 hp gear motor
- High torque double reduction belt drive system
- Duty Cycle: Continuous
- Operator Frame: 2" square, 11 gauge steel tubing
- Operator Cover: 18 gauge galvanized steel, color coated (10 ga. cover also available)
- Operator Size: 68" long x 51" high x 30" wide



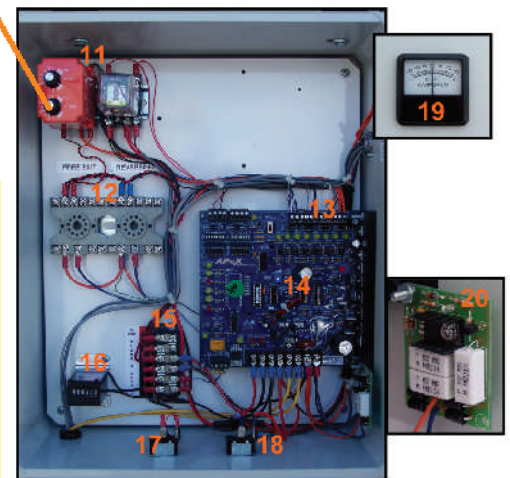
VERTICAL PIVOT GATE OPERATOR

OPERATOR DETAIL

1. Control Box
2. Open limit switch
3. Safety pin
4. Battery Shelf
5. Operator Arm
6. Spring Assembly
7. Bullwheel & belt system
8. Gear motor
9. Belt tension release
10. AC input & outlet box

CONTROL BOX DETAIL

11. Optional accessories
12. Loop detector socket bases
13. Board accessory inputs
14. Control board - APeX
15. Accessory power strip
16. Cycle counter
17. Pushbutton ON/OFF switch
18. DC main power ON/OFF switch
19. Amp meter
20. Surge board

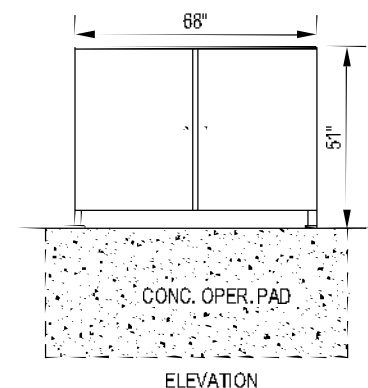
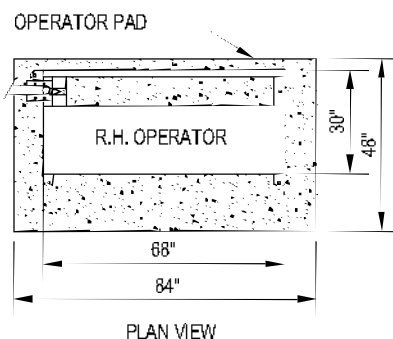


CAUTIONS



- Automatic gates not for pedestrians
- Automatic gate operators designed for vehicular traffic only; operators are powerful and can cause serious injury or death; **DIRECT ALL PEDESTRIAN TRAFFIC TO SEPARATE PEDESTRIAN GATE**
- UL 325 requires use of contact or non-contact anti-entrapment devices

Dimensions



MET Listed to UL 325



Supporter and Proud Member of

