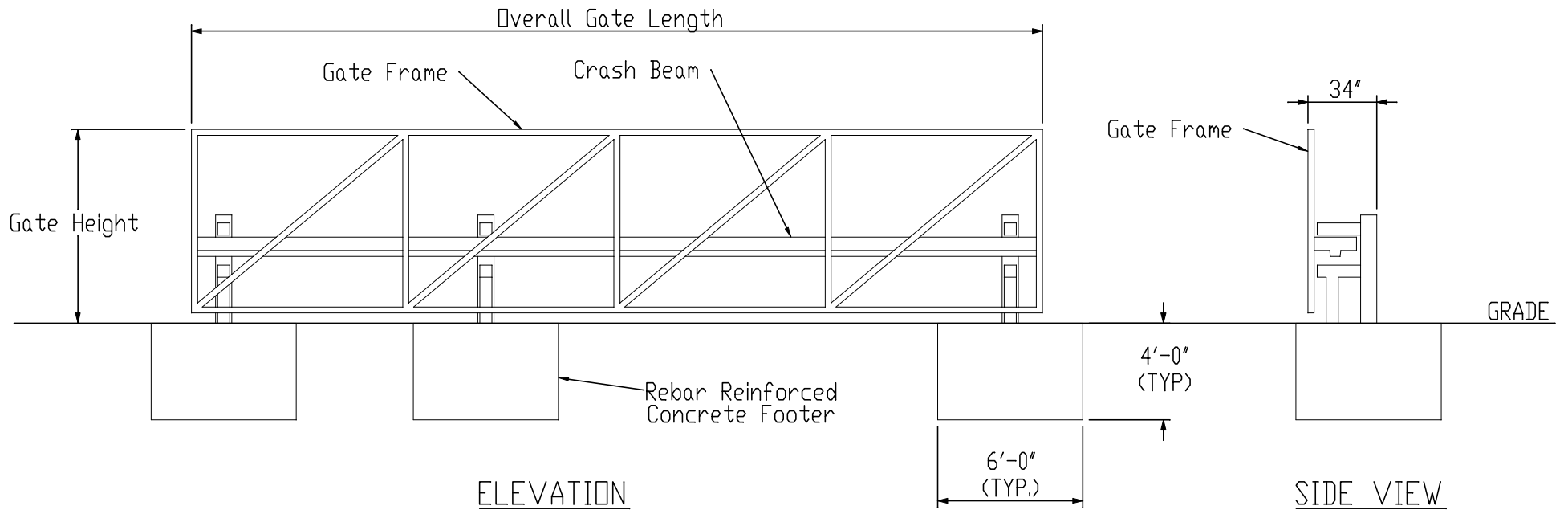
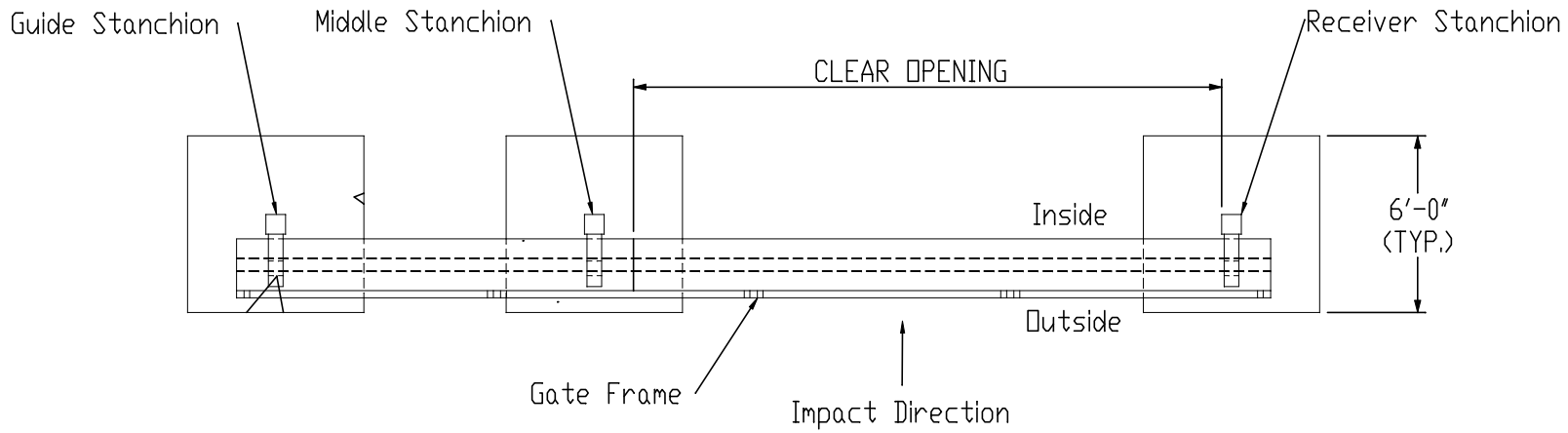


PLAN VIEW



Notes:

- 1) This is a generic drawing with typical dimensions and not job specific. Not to be used for construction.
- 2) Drawn from unsecure side / outside looking in.
- 3) Clear openings from 10' - 30'
- 4) Nominal gate heights up to 8' available.
- 5) Manual gate shown. Also available with chain drive or hydraulic operator.



TYMETAL
CORP.
www.tymetal.com

2549 State Route 40
GREENWICH, NY 12834
PH: 800-328-4283
FX: 518-692-9404