

# FORTRESS GATE

## VERTICAL LIFT

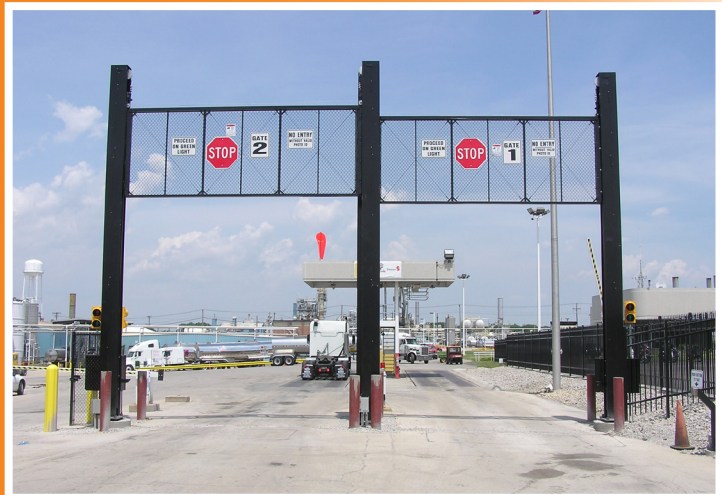
BY TYMETAL CORP.

The Fortress Vertical Lift Gate has been manufactured by Tymetal Corp. for over 25 years and is in constant use throughout North America.

While the Vertical Lift can be used in any setting, it is especially valuable on sites where there is insufficient space outside of the gate opening for a swing or slide gate to retract without hitting an obstacle. The Tymetal Vertical Lift Gate system is designed as a complete system to operate flawlessly: the heavy W12x53 superstructure, a solidly engineered #60 chain drive mechanism, complete with counter weights, engineered footings (including rebar cages and anchor bolts) assure a smooth and precise up-and-down movement. To minimize stress, steel counterweights running inside the vertical support columns are fabricated to balance the weight of the gate, reducing the power demand on the motor. The gate panel hangs on four truck assemblies, each with four sealed and permanently lubricated roller bearings, traveling inside smooth aluminum track. A continuous loop drive system, directly connected to the counterweight in each support column, assures precision operation.

The Vertical Lift Gate is available in a wide range of openings. Ideal for any setting with space constraints, it is also suited for high security applications like detention facilities and heavy use sites such as airports, ports, transportation terminals and delivery docks.

If you have a space problem, ask about the Fortress Vertical Lift Gate. It's the perfect solution.

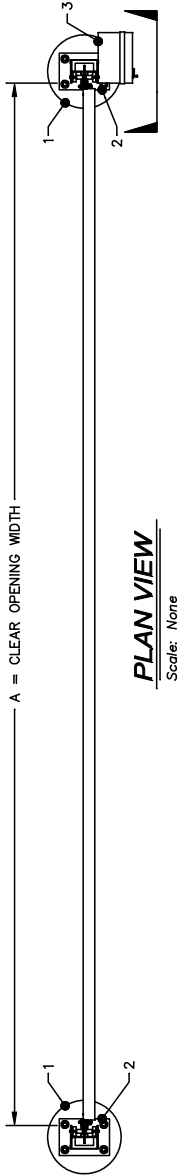


# Tymetal Corp.

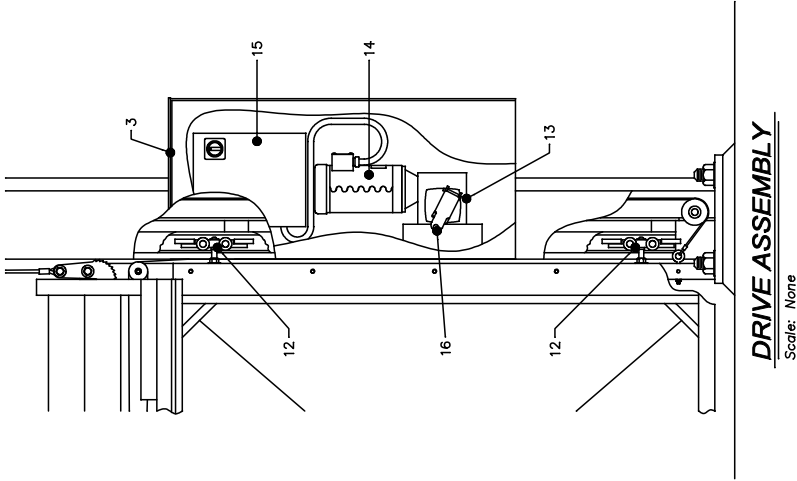
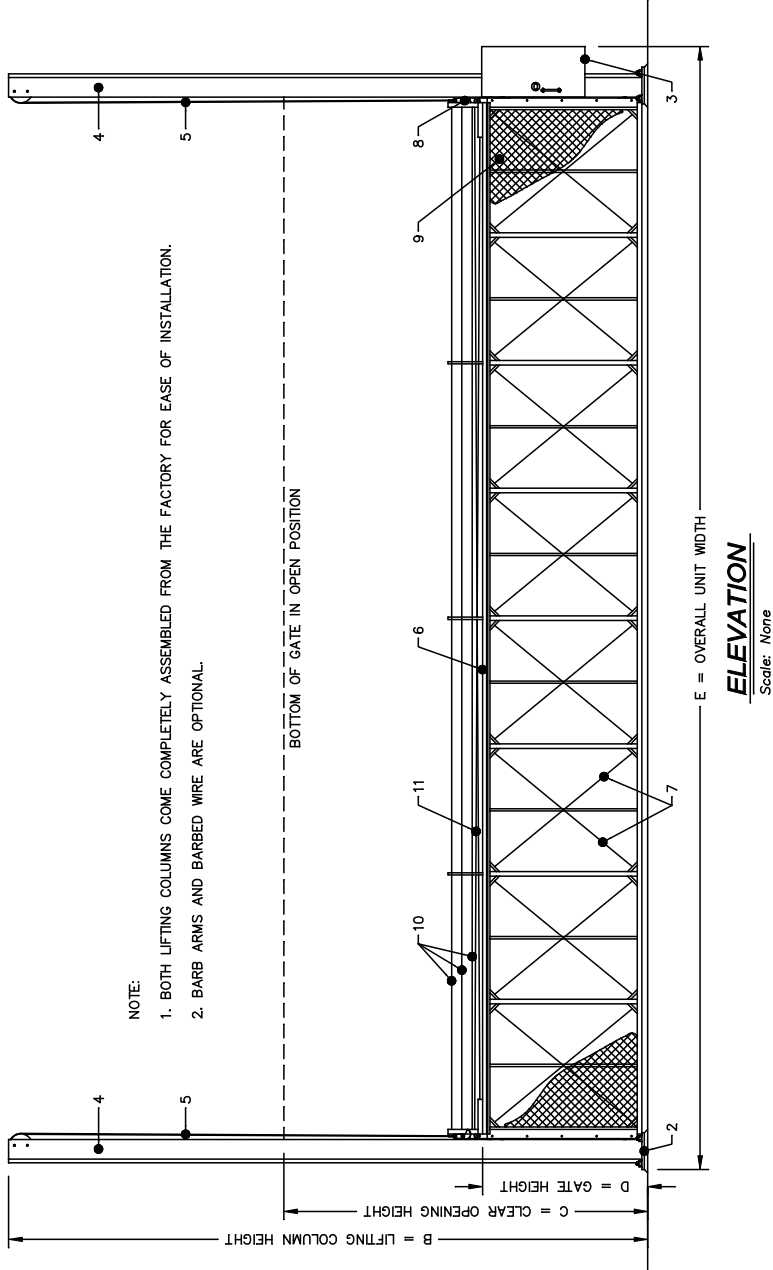
(800) 328-GATE (4283) • [www.tymetal.com](http://www.tymetal.com)  
Greenwich, NY • Pearland, TX



CRITICAL DIMENSION CHART		
MARK	DESCRIPTION	FORMULA DIMENSION
A	CLEAR OPENING	A
B	LIFTING COLUMN HEIGHT	C + D + 4'-0"
C	CLEAR OPENING HEIGHT	C
D	NOMINAL GATE HEIGHT	D
E	OVERALL UNIT WIDTH	A + 2'-11"



- NOTE:
1. BOTH LIFTING COLUMNS COME COMPLETELY ASSEMBLED FROM THE FACTORY FOR EASE OF INSTALLATION.
  2. BARB ARMS AND BARBED WIRE ARE OPTIONAL.



## VERTICAL LIFT GATE

COMPONENT REFERENCES			
MARK	DESCRIPTION	NOTES:	NOTES:
1	CONCRETE COLUMN FOOTING	PRE-ENGINEERED BY TYMETAL	AS REQUIRED BY OWNER
2	LIFTING COLUMN BASE PLATE		SEE NOTE #2
3	MOTOR BOX		2 REQUIRED
4	W12 x 63 LIFTING COLUMN	SEE NOTE #1	4 REQUIRED
5	PRIMARY LIFTING CABLE	TYP. AT ENDS OF GATE FRAME	
6	TOP PRIMARY MEMBER		
7	3/16" S.S. CABLE		
8	SAFETY CAM		FOR MANUAL OPERATION



## VERTICAL LIFT GATE