



RIGID STABILITY

Our Heavy Duty Cantilever Slide Gate is a single track design supported by two posts suitable for single clear opening widths up to 30 feet wide.

It also features an enclosed track and ball bearing wheel systems that have been rigorously tested. Suitable for use in all weather conditions.

MULTIPLE INFILL OPTIONS

DURABLE



Fabricated by AWS Certified Welders using TYMETAL'S various proprietary aluminum extrusions to build a gate frame that is twice as strong as our competition.

TESTED



Highly engineered gate panels, matched operators, and access controls are designed and tested as complete systems to perform flawlessly in all weather.

COMPLIANT



All TYMETAL Cantilever Slide Gates comply with the latest industry safety standards (UL 325 and ASTM F2200).

LIGHTWEIGHT



An aluminum construction along with very low friction allow these gates to be operated manually with hardly any effort.

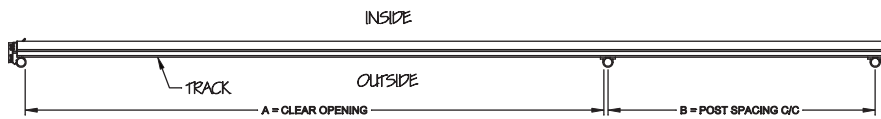


FEATURES AND BENEFITS

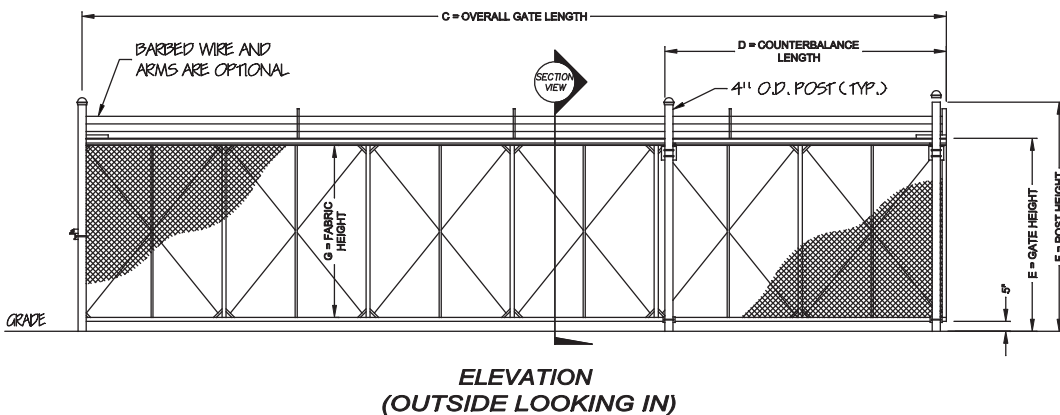
- Closes openings up to 30' wide
- Double/bi-parting closes openings up to 60' wide
- Gate panels are made of aluminum alloy extrusions for strength, durability, and lighter weight
- Infill alternatives include chain link, ornamental picket, and custom configurations
- Adjustable diagonal 1/4" cables provide zero to minimal deflection

CRITICAL DIMENSION CHART

MARK	DESCRIPTION	FORMULA	DIM.
A	CLEAR OPENING	A	-
B	COUNTERBALANCE POST SPACING C/C	$(A/2)-11"$	-
C	OVERALL GATE LENGTH	$A \times 1.5$	-
D	COUNTERBALANCE LENGTH	$A \times 0.5$	-
E	NOMINAL GATE HEIGHT	E	-
F	POST HEIGHT (W BARB ARMS)	$E + 1'-6"$	-
G	FABRIC HEIGHT	$E - 1'-0"$	-

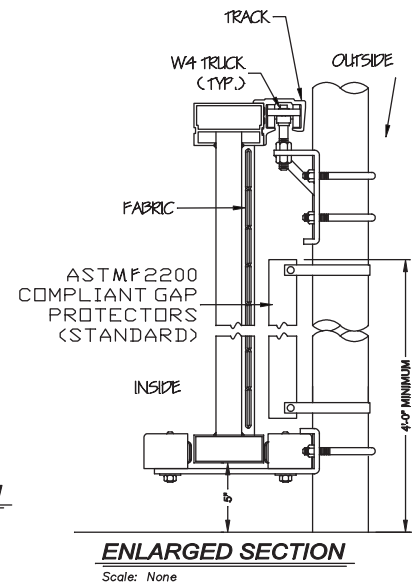


PLAN VIEW



**ELEVATION
(OUTSIDE LOOKING IN)**

SECTION
Scale: None



ENLARGED SECTION
Scale: None

NOTE: STANDARD HEIGHTS UP TO 8'-0". FOR HEIGHTS ABOVE 8' CONTACT MANUFACTURER.

**For more information on our Heavy-Duty Cantilever Gate
Contact TYMETAL at 1.800.328.GATE (4283)**

678 Wilbur Avenue Greenwich, NY 12834
4501 Dixie Farm Road Pearland, TX 77581

