

# TYM-VSA SERIES SLIDE GATE OPERATOR SPECIFICATIONS

Model	HP	Voltage & Phase	Drive Type	Gate Weight	Gate Opening	Gate Speed	Maximum Cycles
TYM-VSA	1	208V / 230V 1Ph	#50 chain	5000 lbs	Up to 100 ft	Variable, up to 2.2 ft/sec	Continuous Duty
		208V / 230V / 460V 3Ph					

## APeX II Controller

- UL325/UL991 compliant 24VDC control module
- Full featured for access control, security, and entrapment protection
- Integral MegaCode receiver
- On-board 3-button station
- Monitored inputs

## Heavy Duty Components

- Adjustable clutch and heavy-duty pillow block bearings for smooth, reliable, quiet power transmission
- All models are rated for continuous duty

## Variable Drive Speed

- Programmable variable speed controller for smooth gate operation and high gate speed
- Soft start/stop programmable

## Manual Hand Crank

- Integrated crank handle located within operator cabinet
- No tools required for use
- Crank handle can be folded out and used for emergency manual operation to crank the gate open or closed

## Weather Resistant Cabinet

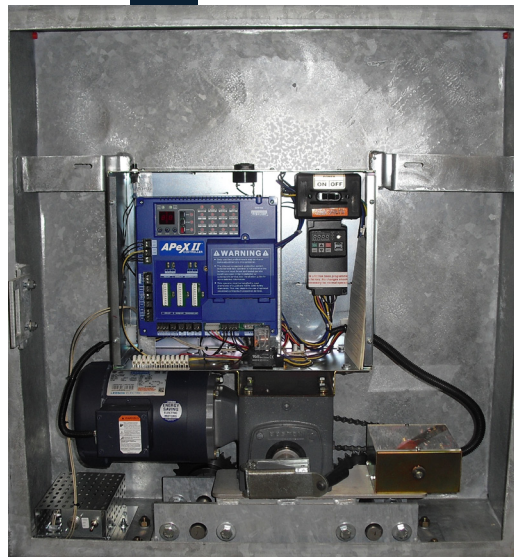
- 10 Gauge Hot-Dip Galvanized steel cabinet (powdercoated finish optional)
- Removable front cover is hinged, gasketed, and lockable with correctional-grade lock

## Standard Convenience Features

- Power on/off button
- Stop/reset button

## Direct C-Face Motor Gear Box Drive

- Designed for smooth and dependable power transmission



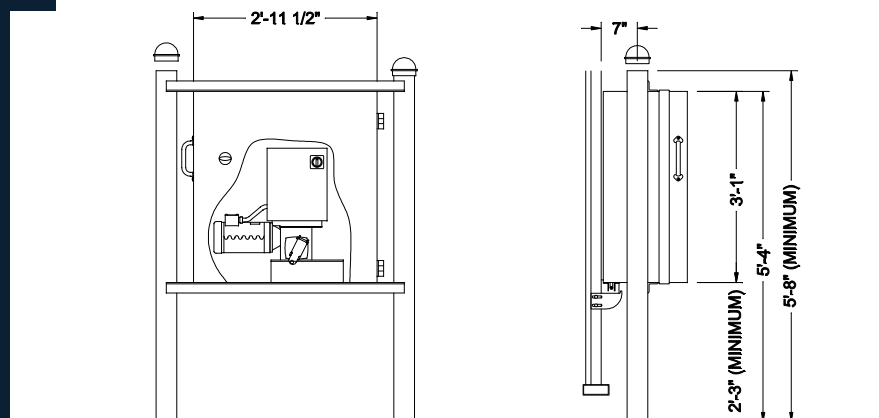
## ELECTRICAL

- Diagnostic LED display for ease of setup and troubleshooting
- 1 HP industrial, continuous duty, 1& 3 phase 56 frame motors
- Integral entrapment sensing system with digital set point for accurate adjustment and enhanced safety
- Built-in dual gate capability using 3-wire shielded cable
- 24V DC power available for access control accessories
- Continuous-tone entrapment alarm with reset button
- Integrated warning beeper during gate movement

## MECHANICAL

- Heavy duty 40:1 right angle C-face gear reducer
- #50 roller chain and sprockets
- Heavy duty steel chassis
- Heavy duty pillow-block bearings
- Adjustable clutch

## Dimensions



Note: Minimum Gate Height = 6' 0"

## CAUTIONS



- Automatic gates not for pedestrians
- Automatic gate operators are designed for vehicular traffic only; operators are powerful and can cause serious injury or death; DIRECT ALL PEDESTRIAN TRAFFIC TO SEPARATE PEDESTRIAN GATE
- UL 325 requires use of contact or non-contact anti-entrapment devices
- ASTM F2200 requires that all exposed rollers are covered

# Tymetal Corp.

(800) 328-GATE (4283) • [www.tymetal.com](http://www.tymetal.com)  
Greenwich, NY • Pearland, TX

