



HOSTILE VEHICLE MITIGATION

The TCG-4 Crash Rated Gate features our heavy duty or structural cantilever design with the addition of a K-4 crash tested beam and steel stanchions embedded in professionally engineered footings.

ASTM F2656-07 M30 P1 CERTIFIED

DURABLE



The use of aluminum as the basis of a crash tested gate is an industry first, and eliminates concern for rust while reducing maintenance.

COST-EFFECTIVE



Offering a competitive price-point and featuring an aluminum construction ensures maximum value over a long life span.

TESTED



Our TCG-4 successfully stopped a 15,000 pound truck traveling at 30 mph during an ASTM Certification crash test.

EASY INSTALLATION

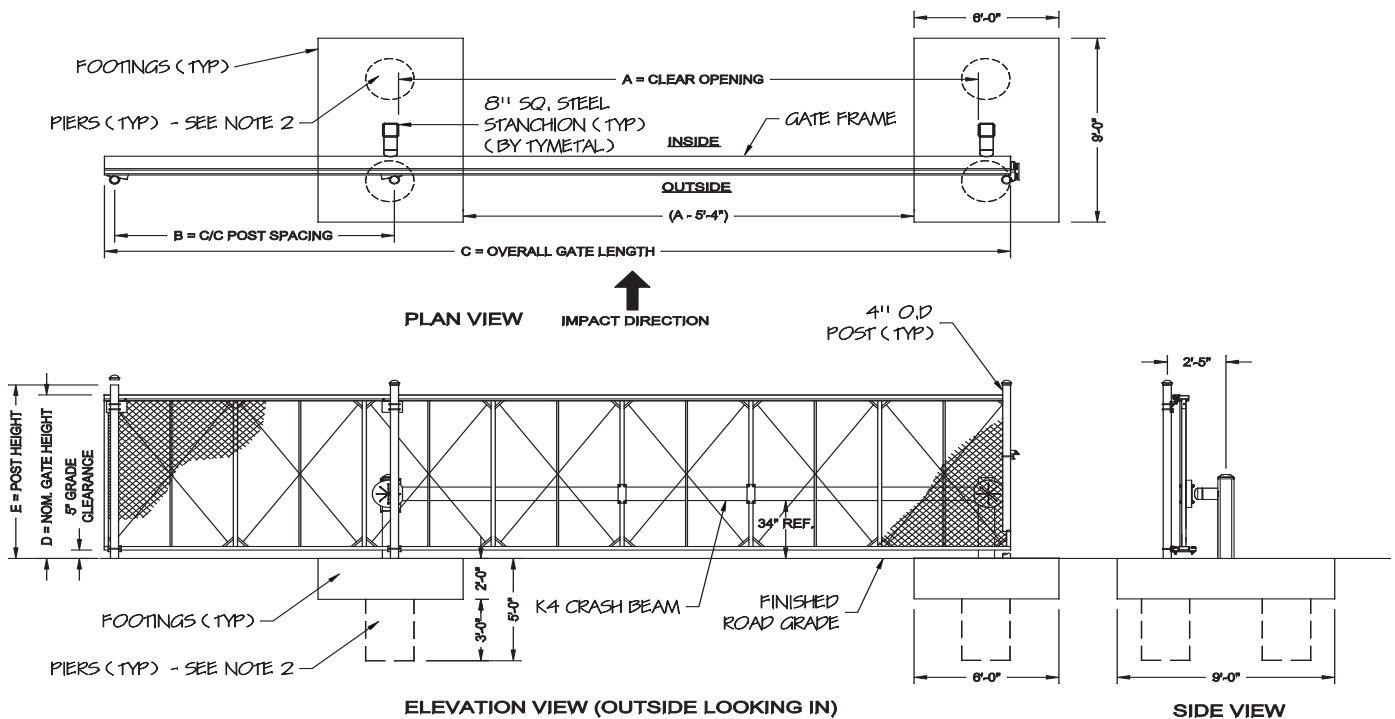


A light weight frame and shallow footings make this gate easy to get up and running in a short amount of time.



STANDARD FEATURES

- ASTM F2656-07 M30 P1 Certified
- Standard clear opening widths up to 20'; custom widths up to 30'
- Manual or powered operation
- Standard heights up to 8'; custom heights available
- Cantilever design - no overhead or ground track needed



* CONTACT MANUFACTURER FOR LARGER CLEAR OPENINGS

CRITICAL DIMENSION CALCULATIONS

A	CLEAR OPENING	A	* MAX. = 20'-0"
B	POST SPACING C/C	$(A/2) - 5"$	
C	OVERALL GATE LENGTH	$(A \times 1.5) + 1'-6"$	
D	NOMINAL GATE HEIGHT	D	
E	POST HEIGHT	$D + 6"$	

- NOTES:
1. FOUNDATIONS SHOWN ARE BASED ON AVERAGE SOIL AND SITE CONDITIONS. FOUNDATIONS MUST BE IN ACCORDANCE WITH ALL LOCAL CODES, AND SHOULD BE REVIEWED BY A LOCAL ENGINEER.
 2. PIERS REQUIRED IN AREAS WHERE FROST LINE IS BELOW FOUNDATIONS.
 3. TYMETAL RECOMMENDS ALL SITE CONDITIONS AND IN SITU SOILS BE REVIEWED BY A QUALIFIED ENGINEER. MINIMUM SOIL BEARING CAPACITY OF 940 PSF AND BACKFILL COMPACTION TO A DENSITY OF NOT LESS THAN 95% MAXIMUM DRY DENSITY ARE REQUIRED. TYMETAL WILL NOT BE RESPONSIBLE FOR FAILED GATE OPERATIONS CAUSED BY UNSTABLE SOIL CONDITIONS.

For more information on our TCG-4 Crash Gates
Contact TYMETAL at 1.800.328.GATE (4283)

678 Wilbur Avenue Greenwich, NY 12834
4501 Dixie Farm Road Pearland, TX 77581

