



### POWERFUL PROTECTION

The TYMETAL TCGR-12 Crash Rated Gate provides a greater level of crash tested performance and utilizes a box frame design that offers a visual deterrent as well. It includes a K-12 crash tested beam and steel stanchions embedded in professionally engineered footings.

## ASTM F2656-07 M50 P2 CERTIFIED

### DURABLE STRUCTURE



Sturdy box frame construction provides maximum perimeter security in addition to crash protection.

### CUSTOMIZABLE



Compatible with a wide array of infill materials and access control devices.

### REVOLUTIONARY DESIGN



This design takes advantage of advanced materials to reduce the weight of traditional steel crash gates. This translates into a longer lasting system, easy installation, and reduced maintenance.

### SMOOTH OPERATION

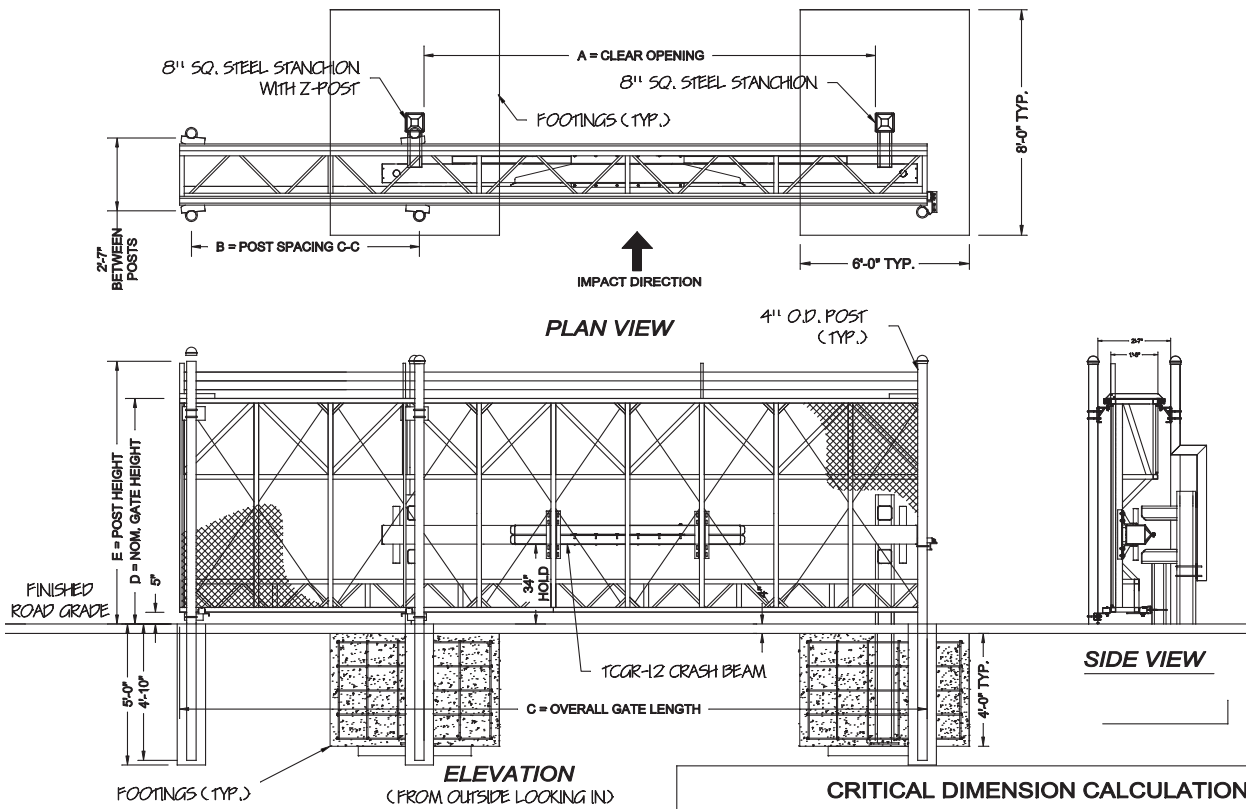


Keyed top track extrusions and proprietary 8-wheel trucks minimize rolling friction. This results in super smooth gate movement, even under manual operation.



## STANDARD FEATURES

- ASTM F2656-07 M50 P2 Certified
- Closes openings up to 26' wide
- Multiple infill options
- Standard heights up to 8'
- Custom heights available
- Lightweight aluminum suited for high cyclage rates and manual operation
- Manual, chain drive, or hydraulic operation
- 1 Year Limited Warranty



\* CONTACT MANUFACTURER FOR LARGER CLEAR OPENINGS

**NOTES:**

1. FOUNDATIONS SHOWN ARE BASED ON AVERAGE SOIL AND SITE CONDITIONS. FOUNDATIONS MUST BE IN ACCORDANCE WITH ALL LOCAL CODES, AND SHOULD BE REVIEWED BY A LOCAL ENGINEER.

2. PIERS REQUIRED IN AREAS WHERE FROST LINE IS BELOW FOUNDATIONS.

3. TYMETAL RECOMMENDS ALL SITE CONDITIONS AND IN SITU SOILS BE REVIEWED BY A QUALIFIED ENGINEER. MINIMUM SOIL BEARING CAPACITY OF 940 PSF AND BACKFILL COMPACTION TO A DENSITY OF NOT LESS THAN 96% MAXIMUM DRY DENSITY ARE REQUIRED. TYMETAL WILL NOT BE RESPONSIBLE FOR FAILED GATE OPERATIONS CAUSE BY UNSTABLE SOIL CONDITIONS.

### CRITICAL DIMENSION CALCULATIONS

Dimension	Description	Calculation	Notes
A	CLEAR OPENING	A	* MAX. = 26'-0"
B	POST SPACING C/C	$(A/2) - 2"$	
C	OVERALL GATE LENGTH	$(A \times 1.5) + 2'-3"$	
D	NOMINAL GATE HEIGHT	D	
E	POST HEIGHT	$D + 1'-6"$	

For more information on our TCGR-12 Crash Gate  
 Contact TYMETAL at 1.800.328.GATE (4283)

678 Wilbur Avenue Greenwich, NY 12834  
 4501 Dixie Farm Road Pearland, TX 77581

