

We Close Openings

# TIGER

## Security Gate System



- **T**ested - Exceeded 200,000 cycles
- **I**ntegrated - Matched components from a single source
- **G**uaranteed - Unsurpassed product support
- **E**xperienced - Over 20 years of proven best quality
- **R**eliable - Reduced maintenance requirements



### Features:

- Complete gate, operator, lock with access control package
- Single system design for gate openings from 10' to 80'
- Gate and operator system tested > 200,000 cycles
- Vandal-proof security locks
- Tamper-resistant catcher assembly

Greenwich, NY  
800-328-GATE (4283)

# Tymetal Corp.

Pearland, TX  
www.tymetal.com

## Design Concept:

Tymetal Corp., the industry leader in the manufacture of vehicle cantilever slide gate systems over the past 20 years, is pleased to offer the complete TIGER security gate system package. The entire gate package is comprised of standard components. These components are pre-tested as a system to assure compatibility and to expedite design and delivery while also reducing installation errors and facility maintenance requirements.



## Tested System:

The Tymetal Structural Cantilever Slide Gate and TYM-VS Operator is the only fully integrated gate and operator package that has been tested over 200,000 cycles under constant duty testing in extreme weather conditions. The system combination provides for long service life, greatly reducing the maintenance typically required on other systems.

## Sole Source Responsibility:

Common project specifications call for the gate to be supplied by one manufacturer and for the operator to be sourced from yet another manufacturer. The contractor must then gather the individual components and create a working system at the job site. The Tymetal TIGER integrated system removes all contractor guess-work with a straightforward system design that has been proven to function properly.

## Gateway Coverage – single gates to 40', doubles to 80'.

Uniform design configured and formulated to service vehicle openings from 10 foot to 40 foot wide (double gates to 80'). The gate panel height may range from 4 foot to 16 foot tall. A choice of gate panel fillers is available - either chain link mesh, various ornamental picket designs or other materials as required. The gate panels may also be color coated to match the adjacent fencing system.



## System Benefits:

Increased security is designed in:

- **Lock Location** - Precise alignment.
- **Special Catcher** - Prevents deflection.
- **Hand Crank** - Keeps gate in control, operated from a secure area at all times, with or without power.
- **Gate, Operator & Lock** - Designed to work in unison forming the most comprehensive and most thoroughly tested gate system in the security industry.



# One basic design encompasses a range



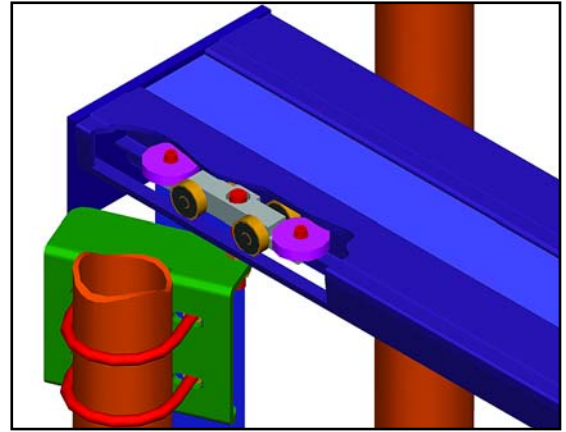
## Gate Panel:

Engineered aluminum gate panels are designed for strength and corrosion resistance. Tymetal Corp. gate panel design utilizes sealed ball bearing internal rollers that provide protection against tampering and inclement weather. The aluminum gate material, with stainless steel and hot dip galvanized hardware, ensures the gate provides the best possible appearance at your project site.



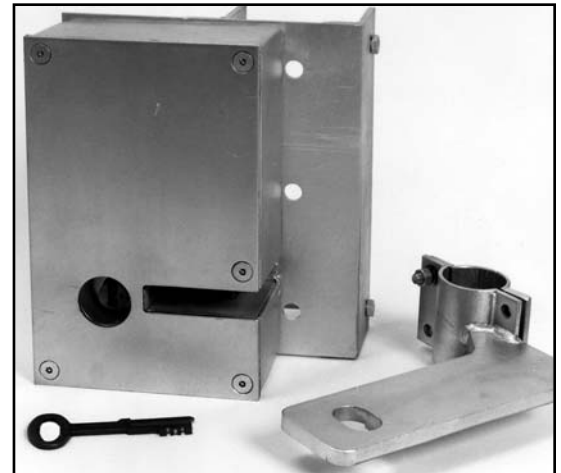
## Operator:

The TYM-VS operator is the most secure offering within the security industry. TYM-VS is a state of the art, virtually maintenance free chain driven operator offering the most secure features in the industry while still allowing installer friendly alignment tolerances. This system features slow start and soft stop along with high operational speeds of up to 2.2 feet per second. The entire motor assembly is protected within a 10 gauge hot-dip galvanized steel motor box and locked with a six tumbler mechanical lock. The motor box hinges are tamper-resistant and welded in place. Manual operation is provided by a manual hand crank that is attached to the gear box within the secure motor box.



## Sliding Gate Lock:

Waterproof, tamper-resistant, electrically operated security gate lock features a six tumbler mechanical release. Security lock also includes status indication for lock position (locked or unlocked) monitoring. The security lock and gate operator are designed to work in unison to ensure trouble free operation while maintaining perimeter security.



## Catcher Assembly:

Specially designed gate catcher provides protection against possible pedestrian attack by preventing gate deflection at the end of the gate panel. Tymetal "Secure Catcher" captures the leading end of the gate panel between 2 posts at both the top and bottom of the gate, eliminating the threat of prying the gate panel open.

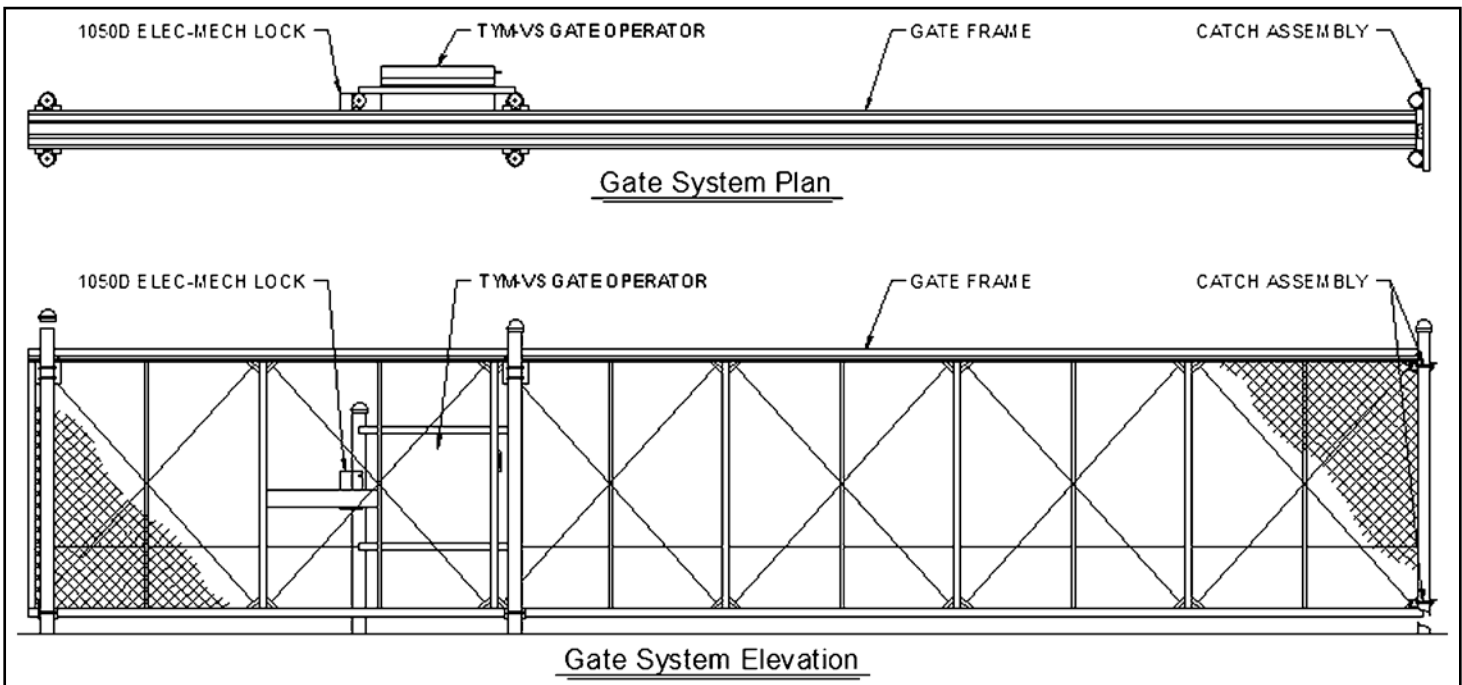


of openings from 10 ft to 80 ft in width.

## Quality Controlled Manufacturing:

Factory Controlled Quality - Built into every TIGER System

Tymetal Corp. has been manufacturing aluminum gates and operators for over 20 years and has the experience and expertise to guarantee a quality gate system. From the welding process that is certified per AWS D.1.2 Structural Welding Code to the welding jigs that are aligned with lasers - Tymetal quality is unsurpassed. From individual welders who have to pass stringent qualification tests to the aluminum extrusions of exact tempers that are specially designed for strength and appearance - the Tymetal gate system is the best. Gate systems are what Tymetal Corp. does and this product focus is evident in the quality of the system produced. Why rely on a gate that is fabricated on the job site or from a "me too" manufacturer without certified processes, materials and proven know how?



## Controls to Enter or Exit Facility:

Reversing Device (Loop Detector)  
Digital Keypad - 100 codes  
Digital Keypad - 480 codes  
Card Reader/Programming Deck - 1 code  
Card Reader/Programming Deck - 3500 codes  
Proximity Card Reader  
Exterior 3 Button Station  
Radio Receiver  
Radio Transmitter

Model PEEK 625X  
Model ADV-100M  
Model AC-480  
Model 11-024  
Model 11-3500  
Model 23-106  
Model 3BXT  
Model R3028  
Model R4120



Greenwich, NY  
800-328-GATE (4283)

**TYMETAL CORP.**  
A FORT MILLER GROUP COMPANY  
[www.tymetal.com](http://www.tymetal.com)  
©February 2005

Pearland, TX  
[www.tymetal.com](http://www.tymetal.com)