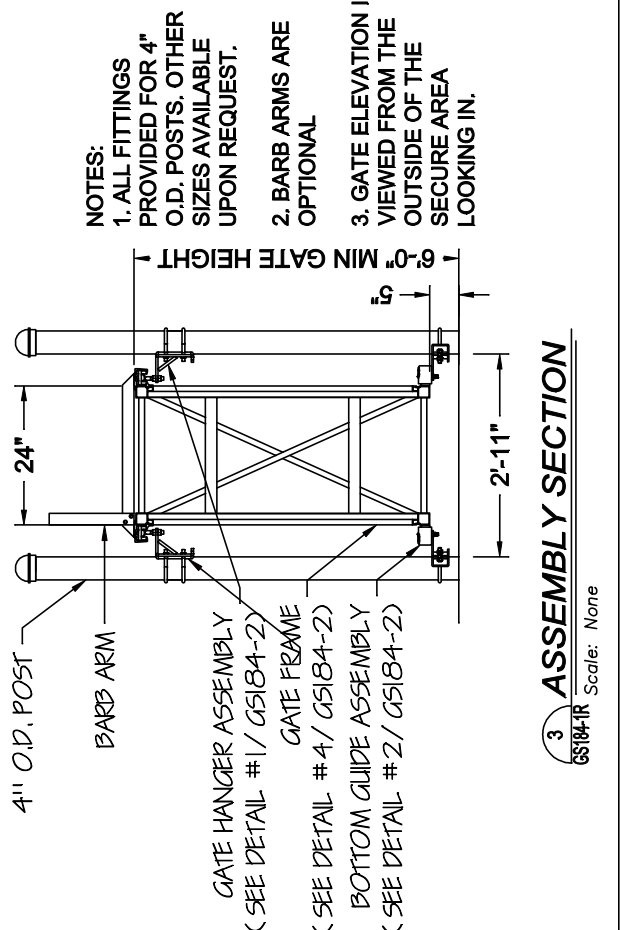


CRITICAL DIMENSION CHART

A	B	C	D	E	F	G
CLEAR OPENING	COUNTERBALANCE POST SPACING C/C	OVERALL GATE LENGTH	COUNTERBALANCE LENGTH	NOMINAL GATE HEIGHT	POST HEIGHT	FABRIC HEIGHT
A	(A/2) - 11"	A x 1.5	A x 0.5	E	E + 1'-6"	E - 12"



GS184-2

ARCHITECT/ENGINEER:

CONTRACTOR:

Box Frame Cantilever Slide Gate Details

SUBJECT:

PROJECT:

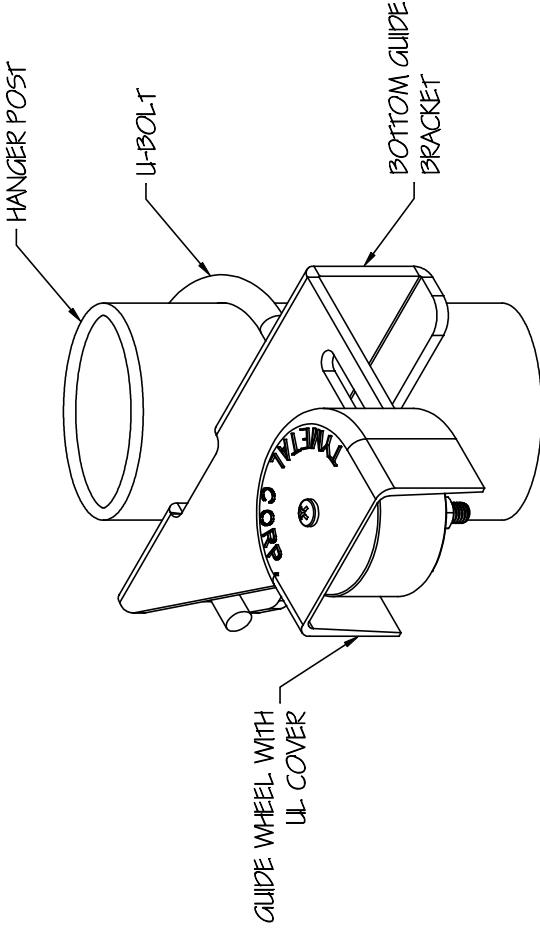
DRAWING NUMBER:

SHEET NUMBER:

2 of 3
TYM-USA Box Frame GS184 R0
DIRECTOR\CAD FILE:

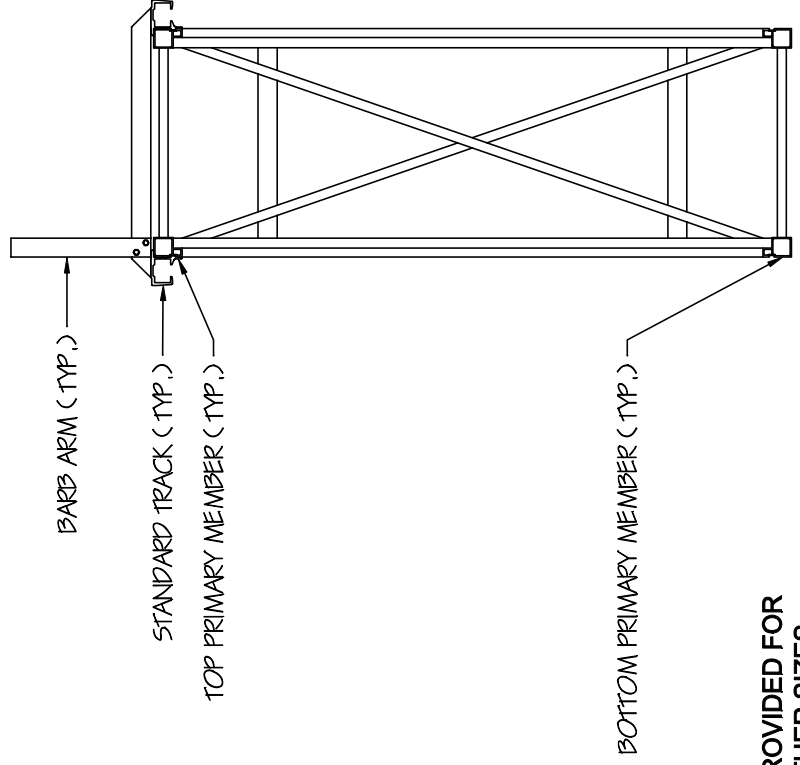
REVISION LEVEL: R0
As Noted
SCALE:
DATE: 11/30/16
CHECKED BY: BGG
DATE: 11/30/16
DRAWN BY: NJD

TYMETAL CORP.
www.tymetal.com
678 WILBUR AVENUE
GREENWICH, N.Y. 12834
PH: (800) 328-4283 - FX: (518) 692-9404



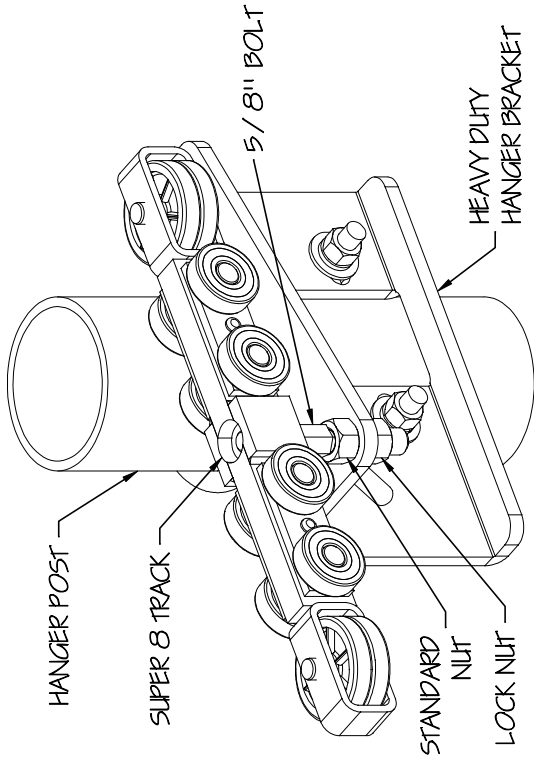
2 BOTTOM GUIDE ASSEMBLY

GS184-2 Scale: None



4 GATE FRAME SECTION

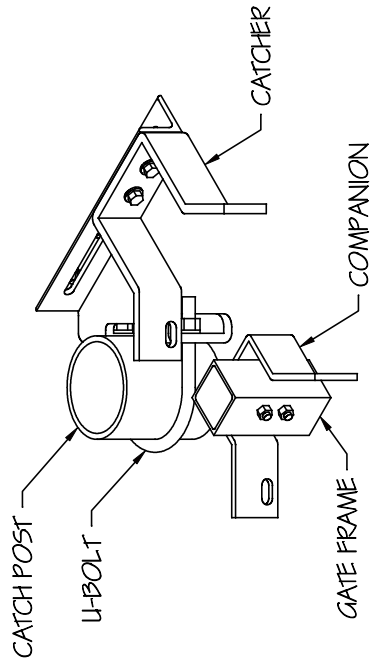
GS184-2 Scale: None



NOTE: SUPER 8 TRUCK SHOWN. W4 TRUCKS MAY BE USED FOR LIGHTER GATES.

1 GATE HANGER ASSEMBLY

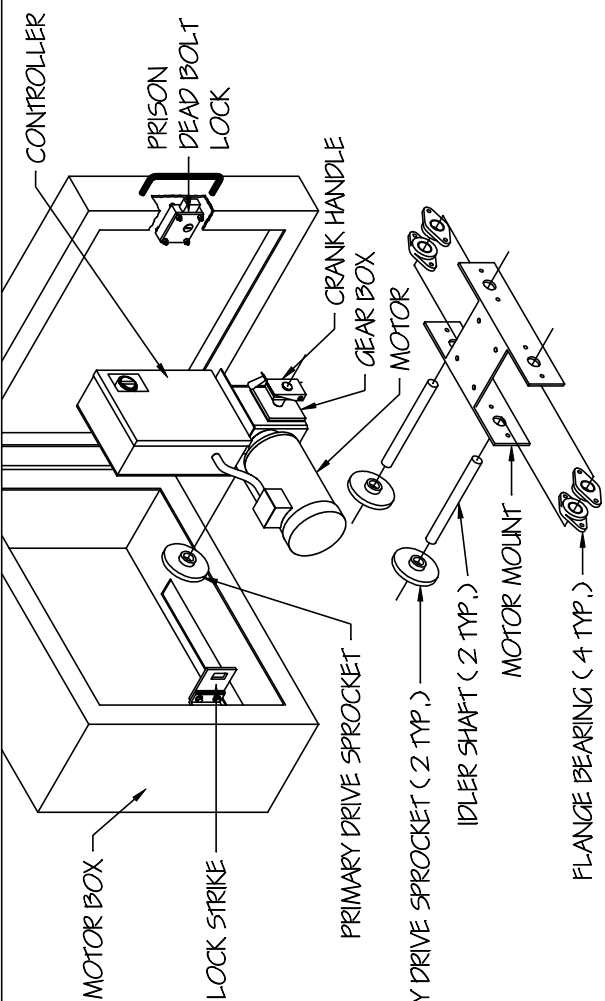
GS184-2 Scale: None



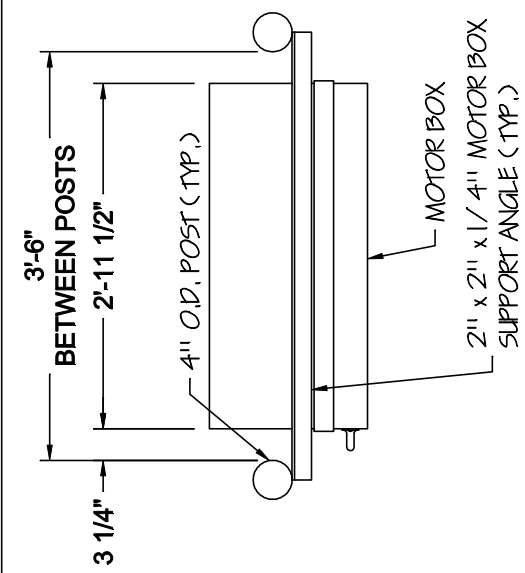
3 CATCH ASSEMBLY

GS184-2 Scale: None

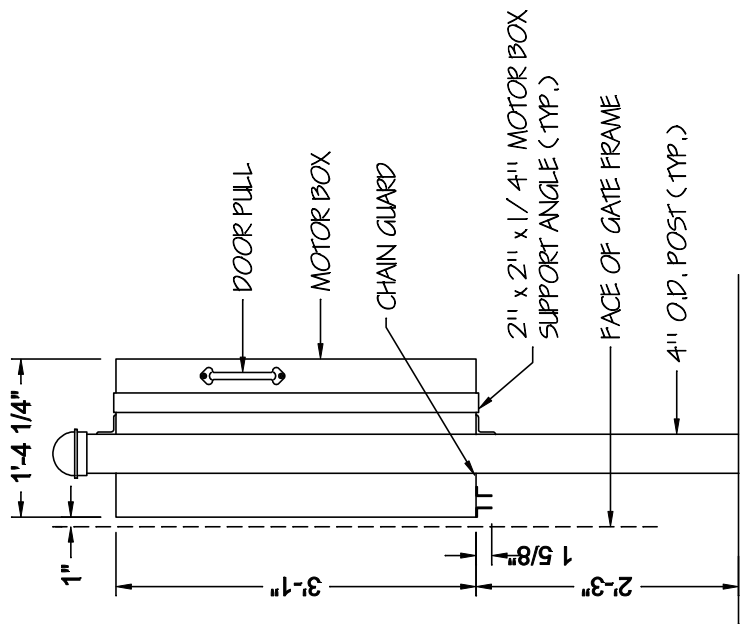
NOTES:
1. ALL FITTINGS PROVIDED FOR 4" O.D. POSTS. OTHER SIZES AVAILABLE UPON REQUEST.



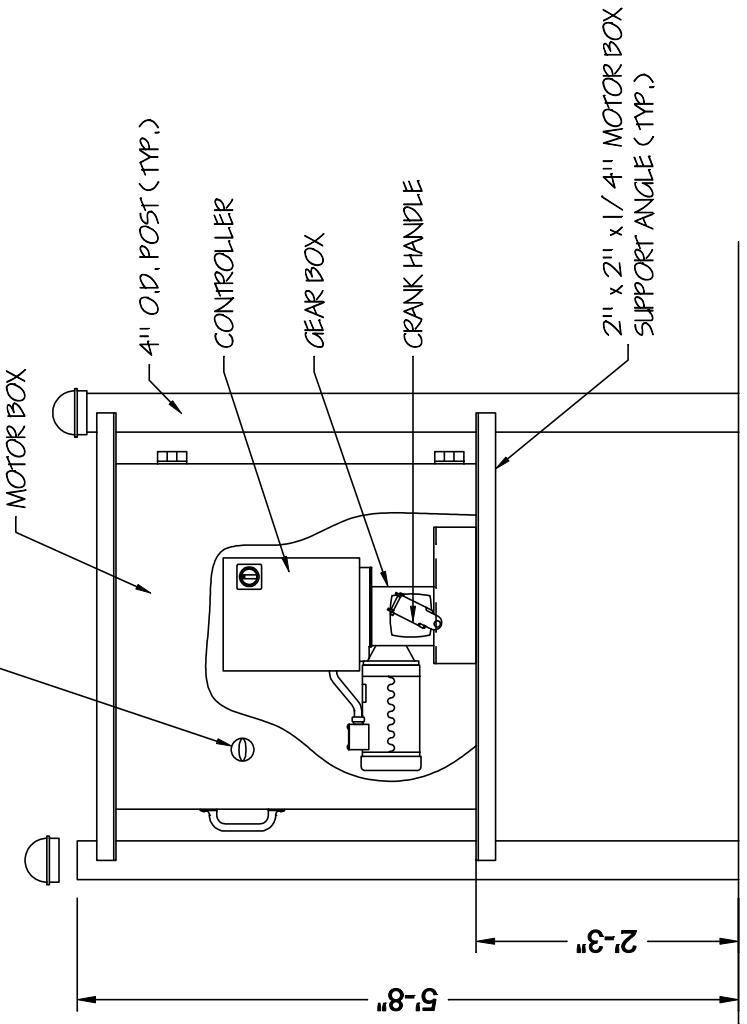
2 OPERATOR DRIVE ASSEMBLY
Scale: None
GS184-3



1 OPERATOR PLAN
Scale: None
GS184-3



4 OPERATOR SIDE ELEVATION
Scale: None
GS184-3



3 OPERATOR FRONT ELEVATION
Scale: None
GS184-3