

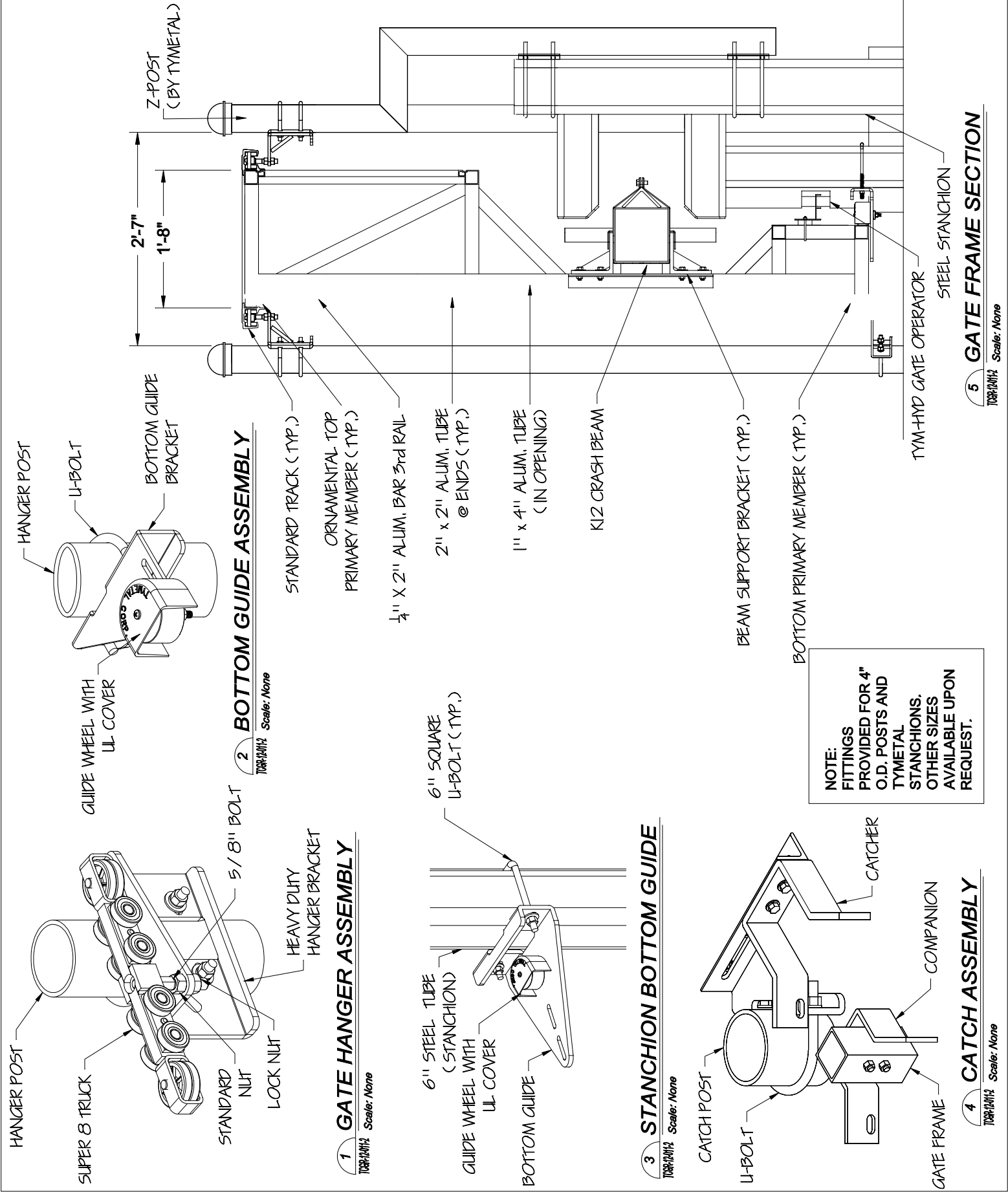
**2 ELEVATION**

APPROVAL (To be completed by customer):  
Name (Print): \_\_\_\_\_  
Signature: \_\_\_\_\_  
Date: \_\_\_\_\_

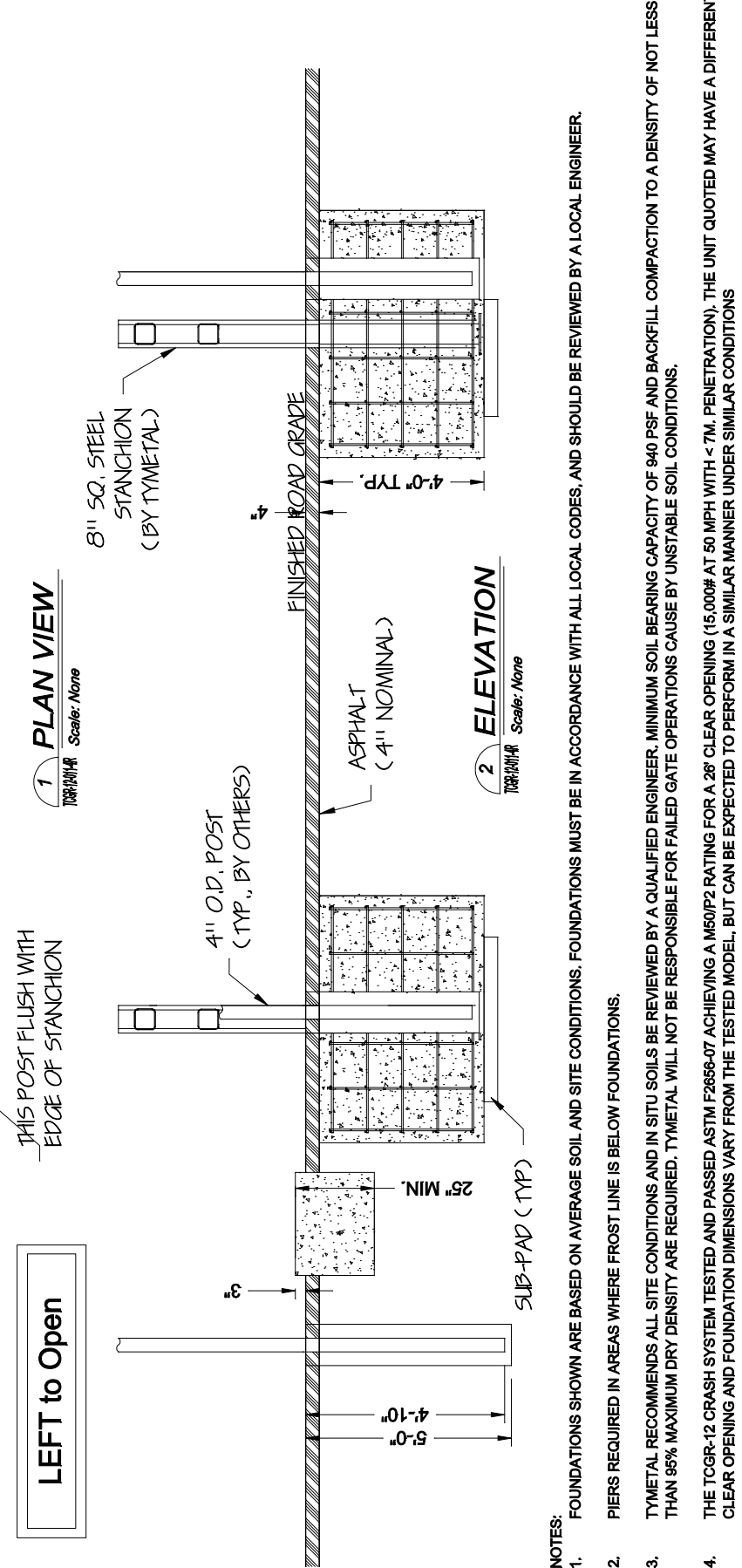
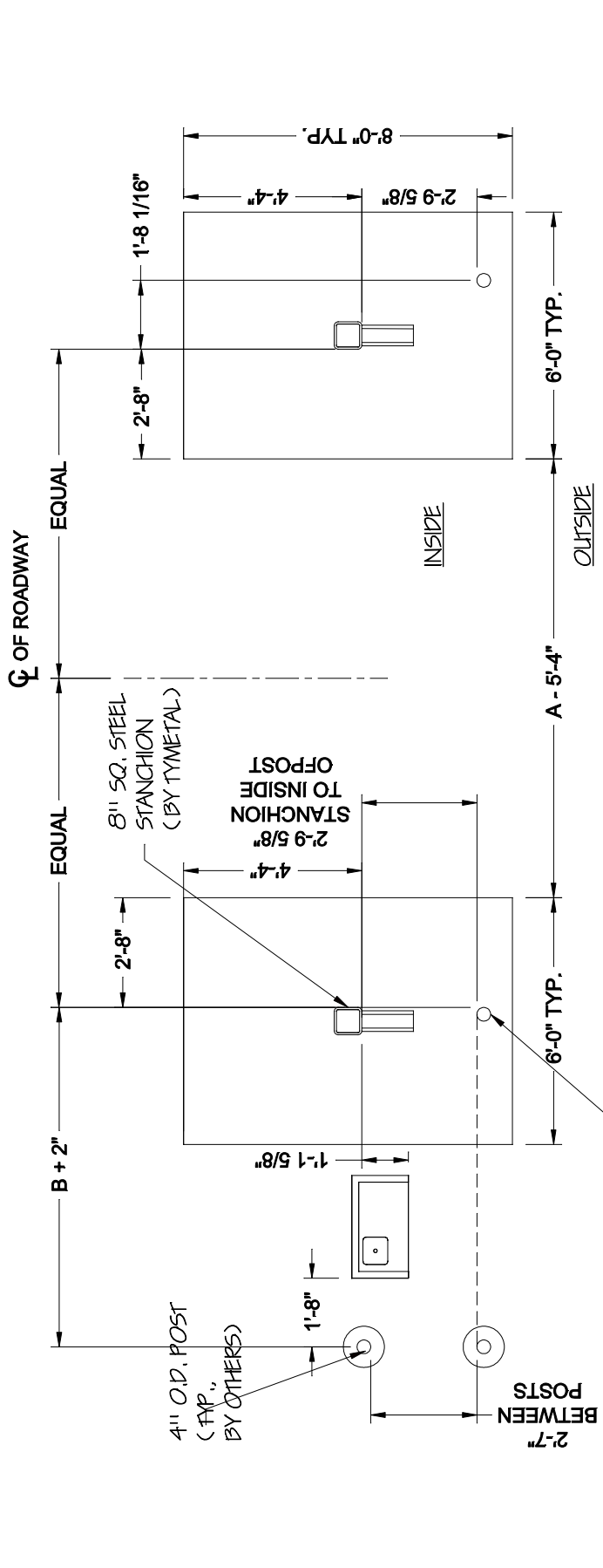
NOTES:  
1. GATE ELEVATION IS VIEWED FROM THE OUTSIDE OF THE SECURE AREA LOOKING IN.  
2. GATE FINISH: GATE IS POWDER COATED STOCK STANDARD BLACK.

**CRITICAL DIMENSION CHART**

NOMINAL GATE SIZE	A	A	D	D
CLEAR OPENING	A	A	D	NOMINAL GATE HEIGHT
POST SPACING C/C	(A/2) - 0'-2"	E		POST HEIGHT
OVERALL GATE LENGTH	(A x 1.5) + 2'-3" F	F		PICKET SPACING C-C
				D + 6"
				3"







- NOTES:**
- FOUNDATIONS SHOWN ARE BASED ON AVERAGE SOIL AND SITE CONDITIONS. FOUNDATIONS MUST BE IN ACCORDANCE WITH ALL LOCAL CODES, AND SHOULD BE REVIEWED BY A LOCAL ENGINEER.
  - PIERS REQUIRED IN AREAS WHERE FROST LINE IS BELOW FOUNDATIONS.
  - TYMETAL RECOMMENDS ALL SITE CONDITIONS AND IN SITU SOILS BE REVIEWED BY A QUALIFIED ENGINEER. MINIMUM SOIL BEARING CAPACITY OF 940 PSF AND BACKFILL COMPACTION TO A DENSITY OF NOT LESS THAN 95% MAXIMUM DRY DENSITY ARE REQUIRED. TYMETAL WILL NOT BE RESPONSIBLE FOR FAILED GATE OPERATIONS CAUSE BY UNSTABLE SOIL CONDITIONS.
  - THE TCGR-12 CRASH SYSTEM TESTED AND PASSED ASTM F2658-07 ACHIEVING A M60/P2 RATING FOR A 28" CLEAR OPENING (15,000# AT 50 MPH WITH < 7M. PENETRATION). THE UNIT QUOTED MAY HAVE A DIFFERENT CLEAR OPENING AND FOUNDATION DIMENSIONS VARY FROM THE TESTED MODEL, BUT CAN BE EXPECTED TO PERFORM IN A SIMILAR MANNER UNDER SIMILAR CONDITIONS

TCGR-12-011-5  
 DRAWING NUMBER:  
 5 of 5  
 SHEET NUMBER:  
 TCGR-12-011-5  
 DIRECTOR/CAD FILE:

PROJECT:  
 SUBJECT: Stanchion Details  
 CONTRACTOR:  
 ARCHITECT/ENGINEER:

DRAWN BY: MAM  
 DATE: 8/29/22  
 CHECKED BY: BGG  
 DATE: 8/29/22  
 SCALE:  
 As Noted  
 REVISION LEVEL:  
 R2

**TYMETAL**  
 SECURITY GATES & PERIMETER SOLUTIONS  
 678 WILBUR AVENUE GREENWICH, N.Y. 12834  
 PH: (800) 328-4283 - FX: (518) 692-9404

