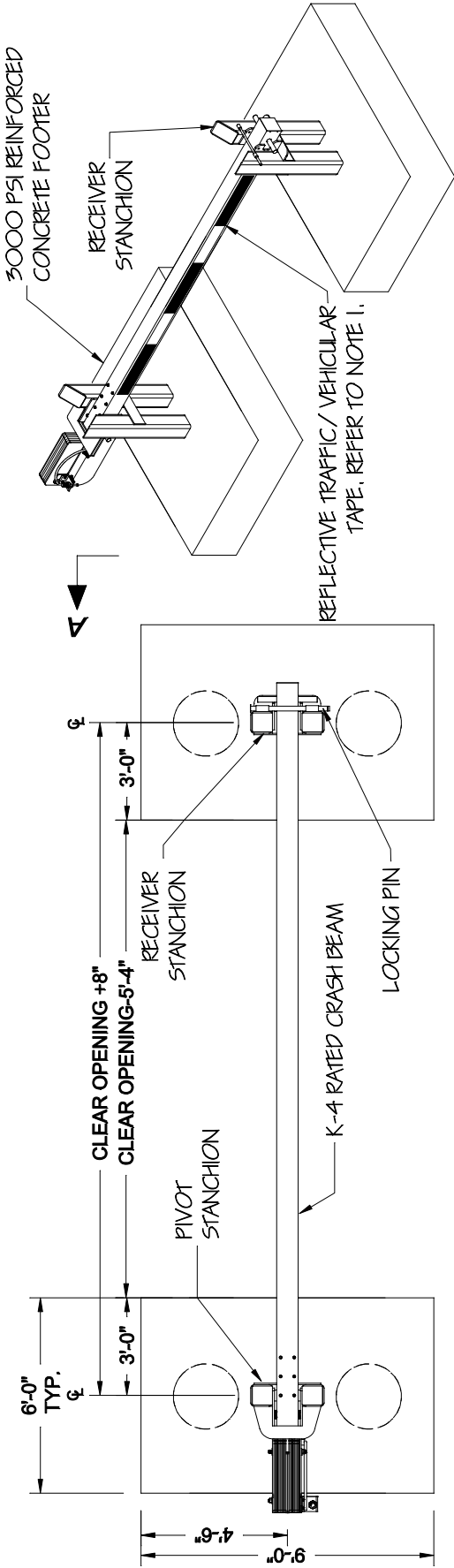
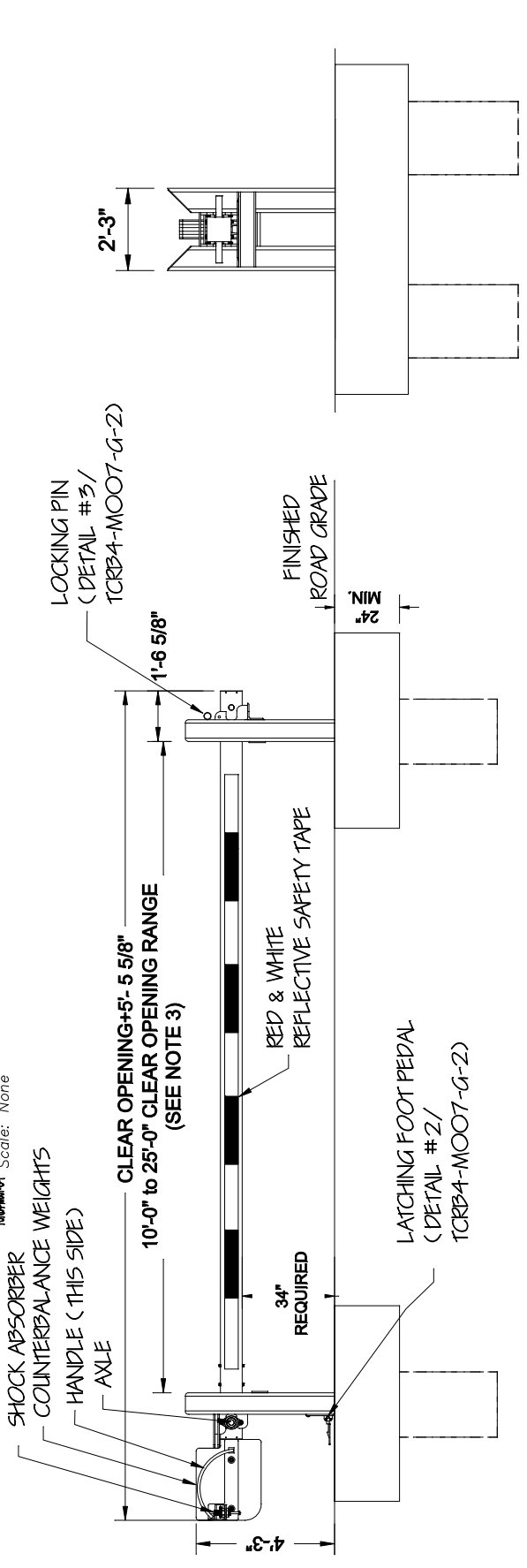


PROJECT: TCRB4-M00G R0	DIRECTOR/CAD FILE: TCRB4-M00G R0	SHEET NUMBER: 1 of 3	DRAWING NUMBER: TCRB4-M007-G-1
CONTRACTOR: Tymetal TCRB-4 Manual Crash Rated Beam	ARCHITECT/ENGINEER:		
DATE: 9/16/16	CHECKED BY: BGG	DATE: 9/16/16	SCALE: As Noted
DATE: 9/16/16	DRAWN BY: SLK	REVISION LEVEL: R0	

**TYMETAL**  
 SECURITY GATES & PERIMETER SOLUTIONS  
 678 WILBUR AVENUE GREENWICH, N.Y. 12834  
 PH: (800) 378-4283 - FX: (518) 697-9404



**1 PLAN VIEW**  
 Scale: None



**2 ELEVATION**  
 Scale: None

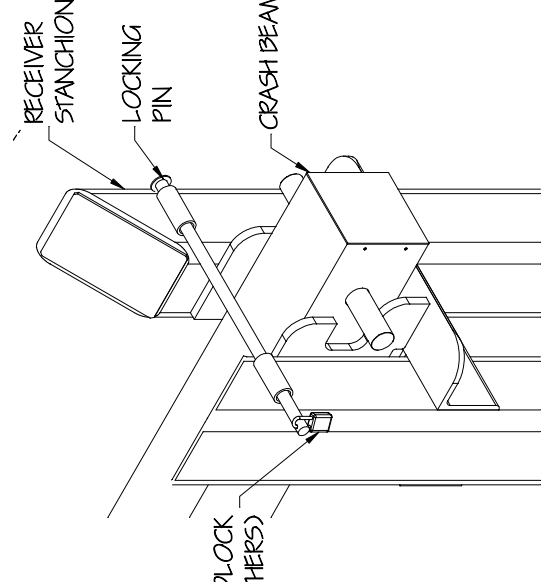
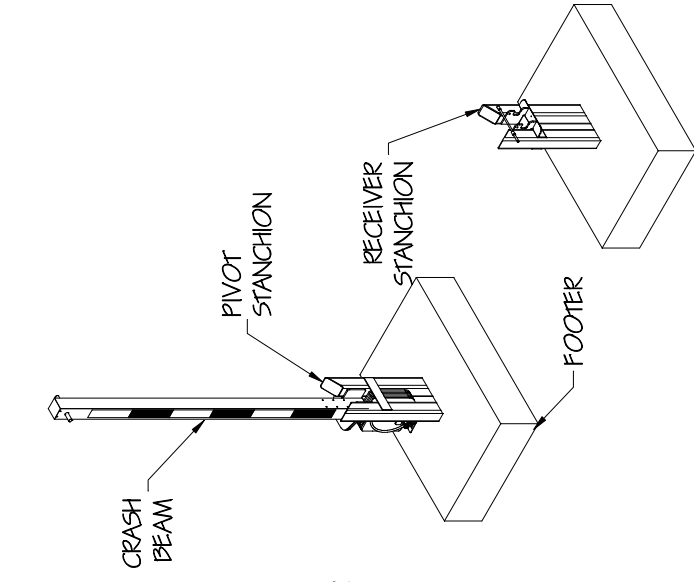
**3 VIEW A-A**  
 Scale: None

- NOTES:**
1. CRASH BEAM IS POWDER COATED WHITE WITH SHOP APPLIED REFLECTIVE TRAFFIC/VEHICULAR TAPE. RED AND WHITE, ALTERNATING, WEATHERPROOF. TAPE WILL BE FHWA - MUTCD COMPLIANT. BY TYMETAL, BOTH INBOUND AND OUTBOUND SIDES.
  2. STANCHIONS ARE COATED WITH ZINC ENRICHED PRIMER AND PAINTED BLACK.
  3. CLEAR OPENING IS DEFINED BETWEEN STANCHIONS (8" TUBE TO 8" TUBE).
  4. WEIGHT PLATE LAYOUT VARIES WITH CLEAR OPENING. EXTENSIONS MAY BE REQUIRED ON LARGER OPENINGS.

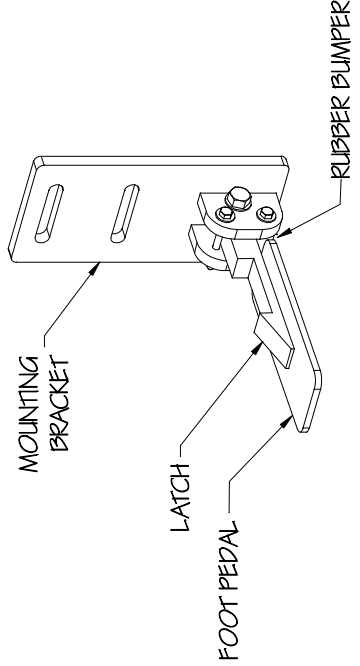
**CRASH RATED ASTM F2656 M30-P1**

TCRB4-M007-G-2	ARCHITECT/ENGINEER:	REVISION LEVEL: <b>R0</b>
DRAWING NUMBER: <b>2 of 3</b>	CONTRACTOR:	<b>As Noted</b>
TCRB4-M00G_R0	SUBJECT: <b>Tymetal TCRB-4 Manual Crash Rated Beam Details</b>	SCALE: <b>9/16/16</b>
DIRECTORY/CAD FILE:	PROJECT:	DATE: <b>9/16/16</b>
		CHECKED BY: <b>BGG</b>
		DATE: <b>9/16/16</b>
		DRAWN BY: <b>SLK</b>

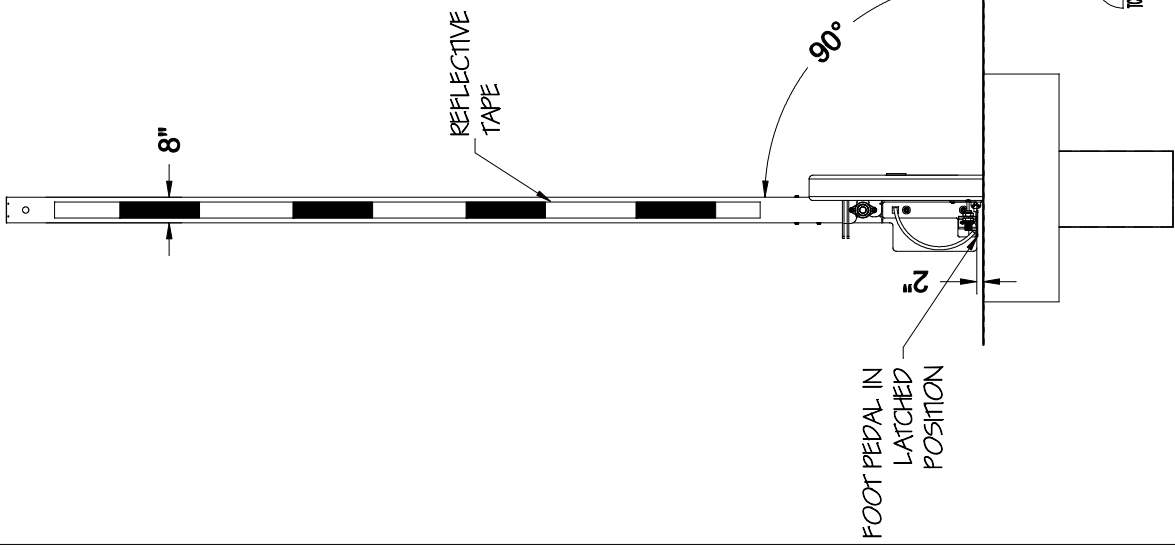
**Tymetal**  
 SECURITY GATES & PERIMETER SOLUTIONS  
 678 WILBUR AVENUE GREENWICH, N.Y. 12834  
 PH: (800) 328-4283 - FX: (518) 692-9404



**2 PEDAL LATCH**  
 Scale: None



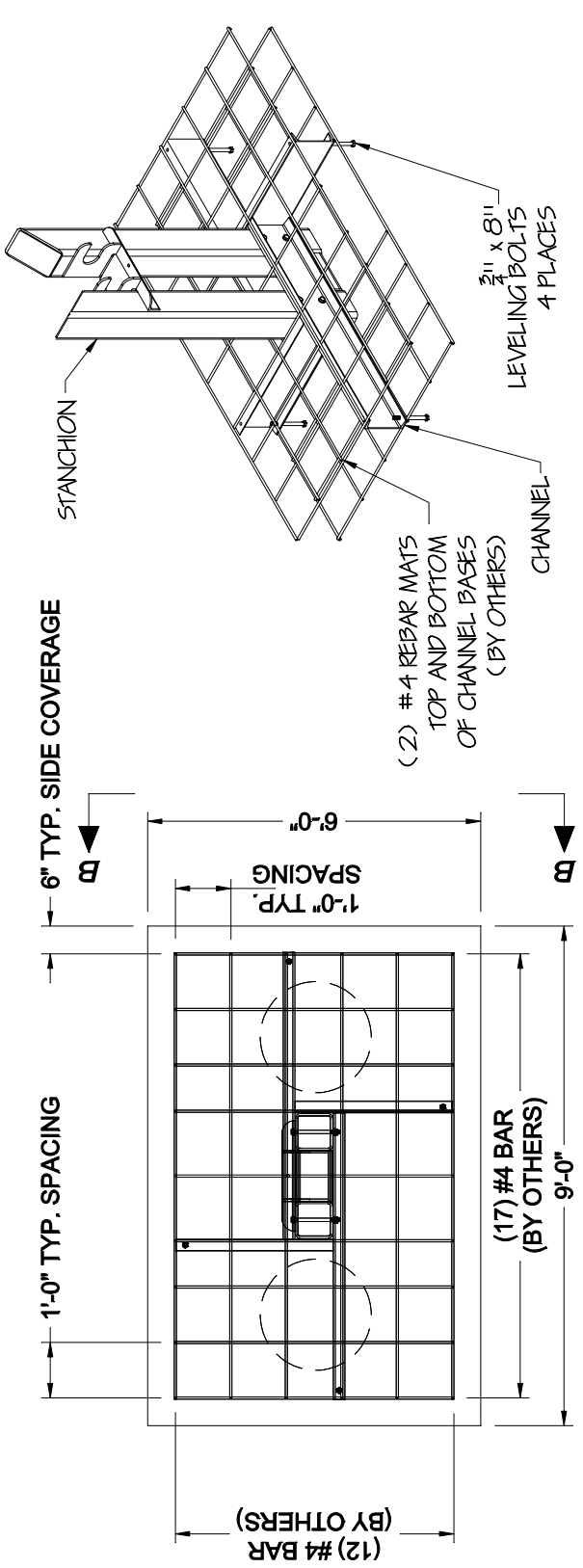
**3 LOCKING PIN**  
 Scale: None



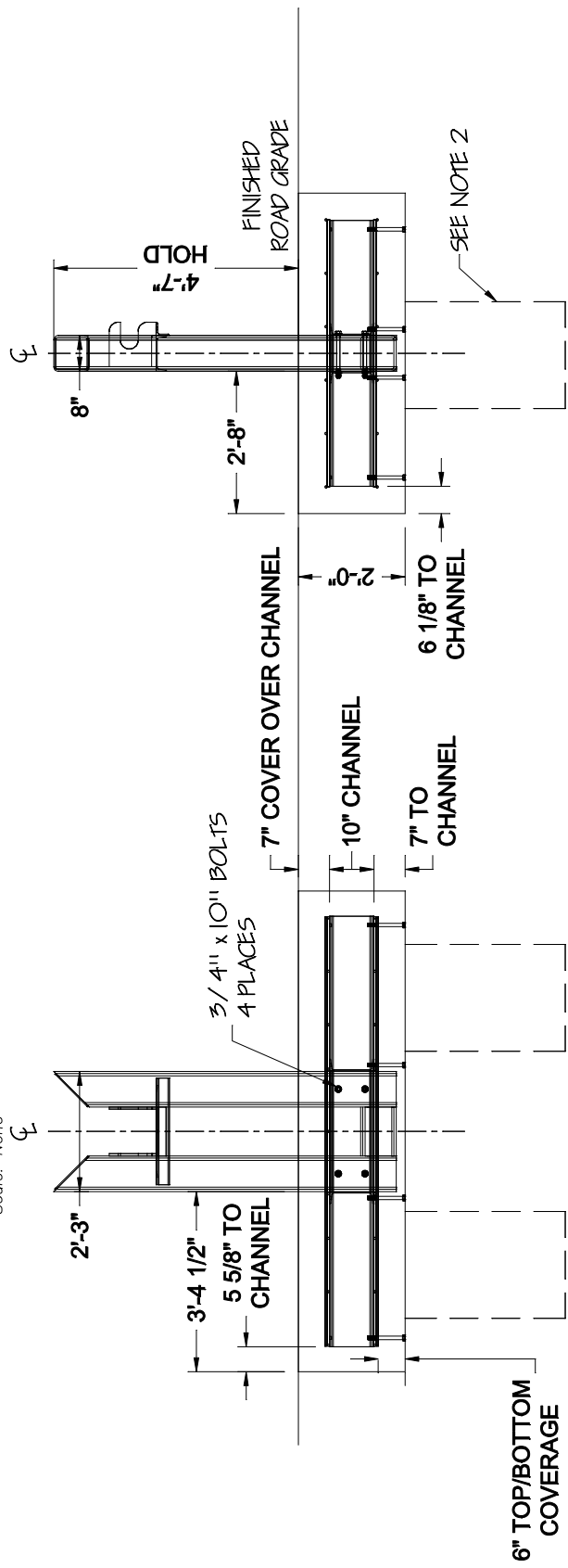
**1 ELEVATION**  
 Scale: None

PROJECT: TCRB4-M00G R0	ARCHITECT/ENGINEER: TCRB4-M007-G-3	REVISION LEVEL: R0
SUBJECT: TCRB4-M00G R0	CONTRACTOR: TCRB4-M007-G-3	As Noted
SHEET NUMBER: 3 of 3	Tymetal TCRB-4 Stanchion Footings	SCALE: As Noted
DIRECTORY/CAD FILE: TCRB4-M00G R0		DATE: 9/16/16
		CHECKED BY: BGG
		DATE: 9/16/16
		DRAWN BY: SLK

**TYMETAL**  
 SECURITY GATES & PERIMETER SOLUTIONS  
 678 WILBUR AVENUE GREENWICH, N.Y. 12834  
 PH: (800) 328-4283 - FX: (518) 692-9404



**1 PLAN VIEW**  
 Scale: None



**2 ELEVATION**  
 Scale: None

**3 VIEW B-B**  
 Scale: None

**NOTES:**  
 1. FOUNDATIONS SHOWN ARE BASED ON AVERAGE SOIL AND SITE CONDITIONS. FOUNDATIONS MUST BE IN ACCORDANCE WITH ALL LOCAL CODES, AND SHOULD BE REVIEWED BY A LOCAL ENGINEER.  
 2. PIERS REQUIRED IN AREAS WHERE FROST LINE IS BELOW FOUNDATIONS.  
 3. TYMETAL RECOMMENDS ALL SITE CONDITIONS AND IN SITU SOILS BE REVIEWED BY A QUALIFIED ENGINEER. MINIMUM SOIL BEARING CAPACITY OF 940 PSF AND BACKFILL COMPACTION TO A DENSITY OF NOT LESS THAN 90% MAXIMUM DRY DENSITY ARE REQUIRED BY TYMETAL. TYMETAL WILL NOT BE RESPONSIBLE FOR FAILED GATE OPERATIONS CAUSED BY UNSTABLE SOIL CONDITIONS. PROJECT SPECIFIC SOIL CAPACITY AND COMPACTION REQUIREMENTS WHEN GREATER THAN SPECIFIED BY TYMETAL SUPERSEDE TYMETAL REQUIREMENTS, PLEASE CONSULT WITH YOUR PROJECT CIVIL ENGINEER FOR GUIDANCE.