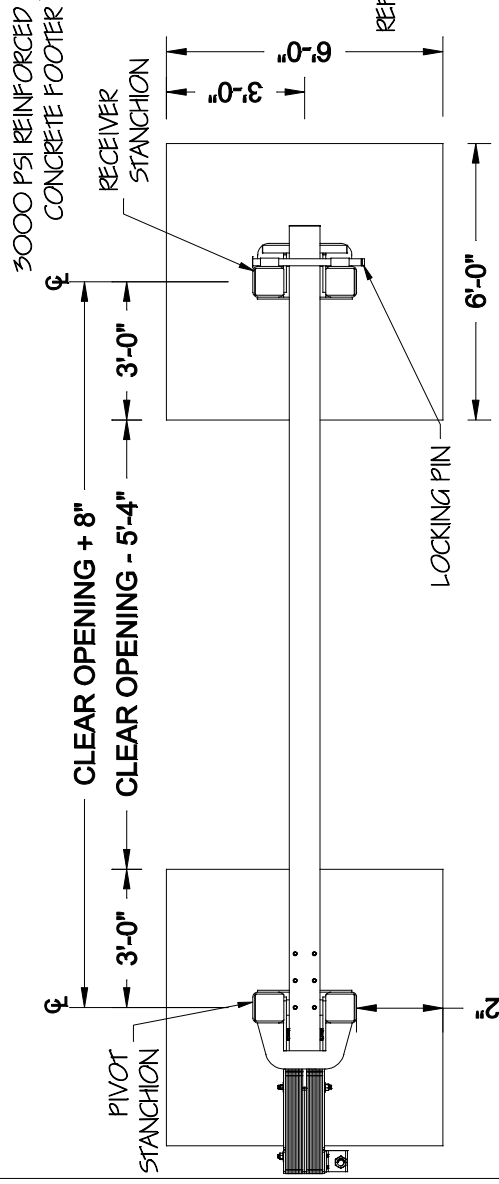
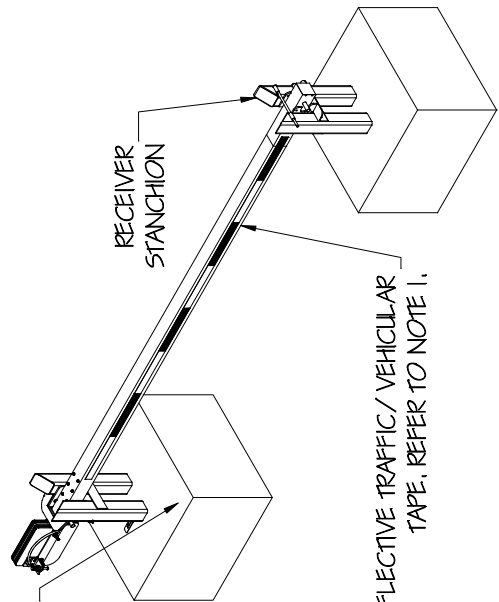


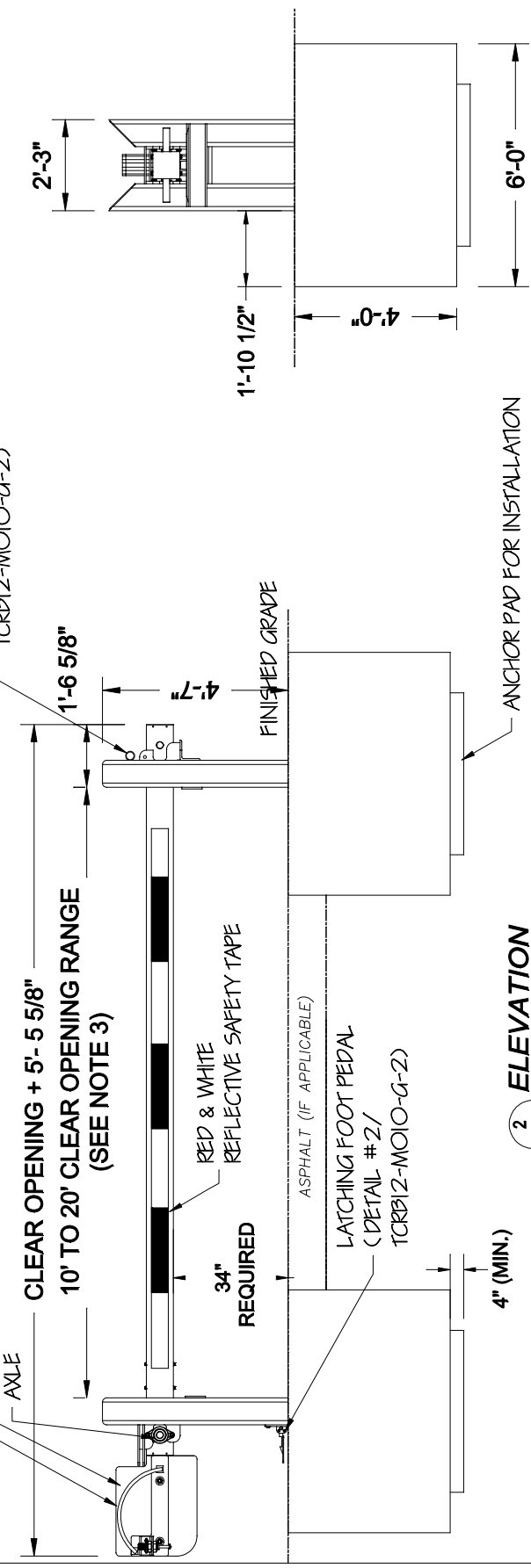
TCRB12-M010-G-1	PROJECT: Tymetal Generic TCRB-12 Manual Crash Beam	ARCHITECT/ENGINEER:	REVISION LEVEL: R1
1 of 4	SUBJECT: TCRB12-M010 Generic R1	CONTRACTOR:	As Noted
DRAWING NUMBER:	SHEET NUMBER:	DATE: 10/3/16	SCALE:
		CHECKED BY: SLK	DATE: 10/3/16
	DIRECTORY/CAD FILE:	DRAWN BY: NJD	

Tymetal
 SECURITY GATES & PERMETER SOLUTIONS
 678 WILBUR AVENUE GREENWICH, N.Y. 12834
 PH: (800) 328-4283 - FX: (518) 692-9404



1 PLAN VIEW
 Scale: None

COUNTERBALANCE WEIGHTS (EXTENSIONS REQ'D, FOR OPENINGS OVER 18 FT.) HANDLE (THIS SIDE)

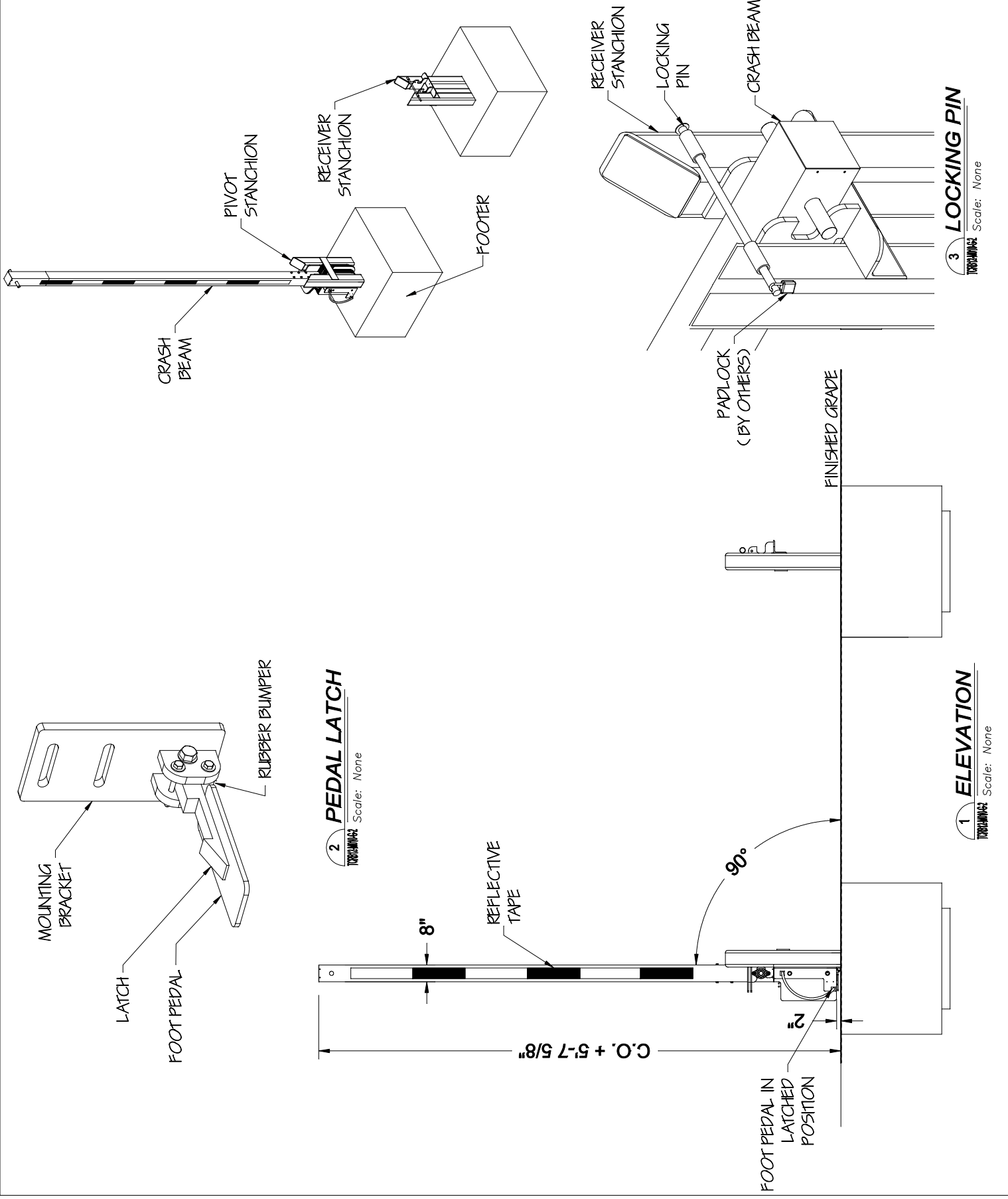


2 ELEVATION
 Scale: None

- NOTES:**
- REFLECTIVE TRAFFIC/VEHICULAR TAPE, RED AND WHITE, ALTERNATING, WEATHERPROOF, TAPE WILL BE FHWA - MUTCD COMPLIANT. SHOP APPLIED BY TYMETAL, BOTH INBOUND AND OUTBOUND SIDES.
 - STANCHIONS ARE COATED WITH ZINC ENRICHED PRIMER AND PAINTED BLACK.
 - CLEAR OPENING IS DEFINED BETWEEN STANCHIONS (8" TUBE TO 8" TUBE).
 - WEIGHT PLATE LAYOUT VARIES WITH CLEAR OPENING. EXTENSIONS MAY BE REQUIRED ON LARGER OPENINGS.

CRASH RATED ASTM F2656 M50-P1

PROJECT: TCRB12-M010-02 SUBJECT: TCRB12-M010 Generic R1 SHEET NUMBER: 2 of 4 DRAWING NUMBER: TCRB12-M010-G-2		ARCHITECT/ENGINEER: CONTRACTOR: SCALE: As Noted DATE: 10/3/16 CHECKED BY: SLK DATE: 10/3/16 DRAWN BY: NJD		REVISION LEVEL: R1 SECURITY GATES & PERIMETER SOLUTIONS 678 WILBUR AVENUE GREENWICH, N.Y. 12834 PH: (800) 328-4283 - FX: (518) 692-9404	
---	--	---	--	--	--

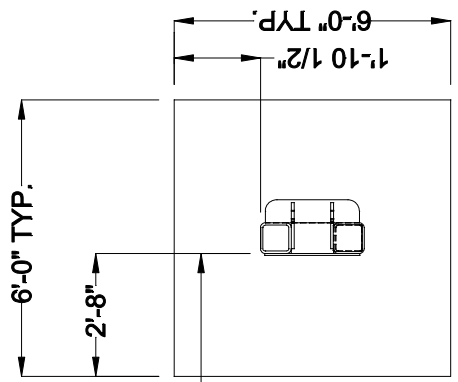


TCRB12-M010-G-3
DRAWING NUMBER:
3 of 4
SHEET NUMBER:
TCRB12-M010 Generic R1
DIRECTOR\CAD FILE:

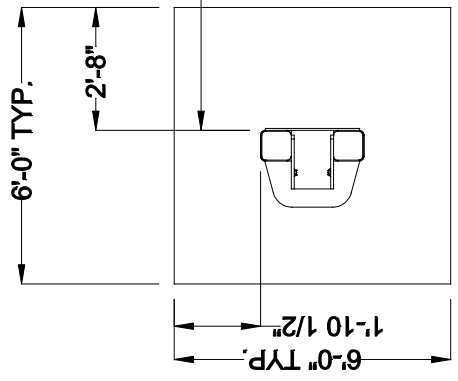
PROJECT:
SUBJECT: TCRB-12 Foundation Plan
CONTRACTOR:
ARCHITECT/ENGINEER:

DRAWN BY: NJD
DATE: 10/3/16
CHECKED BY: SLK
DATE: 10/3/16
SCALE: As Noted
REVISION LEVEL: R1

TYMETAL
SECURITY GATES & PERIMETER SOLUTIONS
678 MILBUR AVENUE GREENWICH, N.Y. 12834
PH:(800) 328-4283 - FX:(518) 692-9404



10' TO 20' CLEAR OPENING RANGE
(SEE NOTE 1)



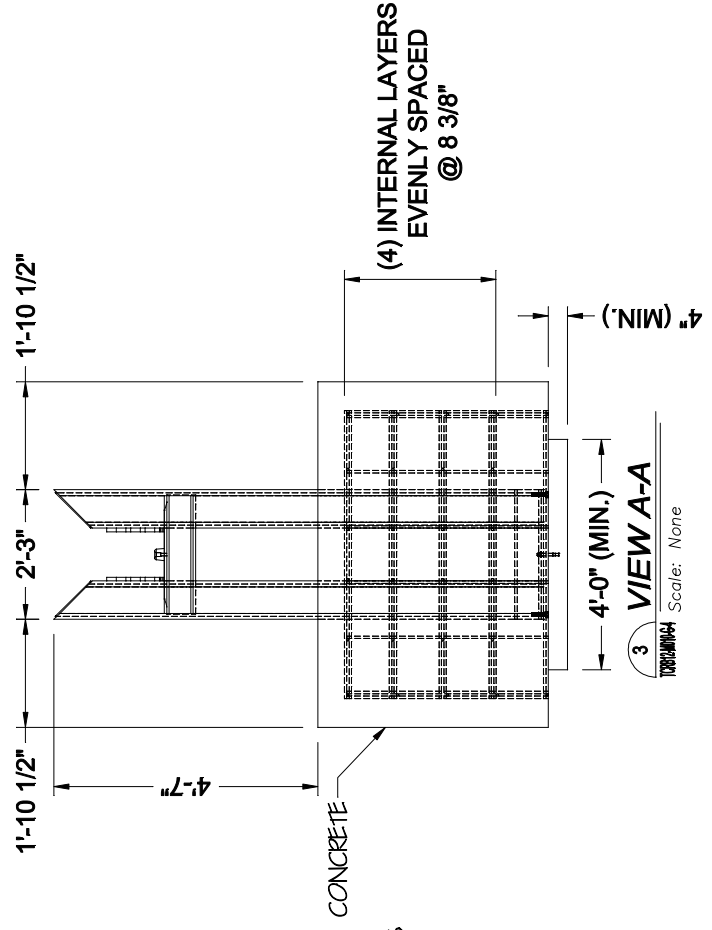
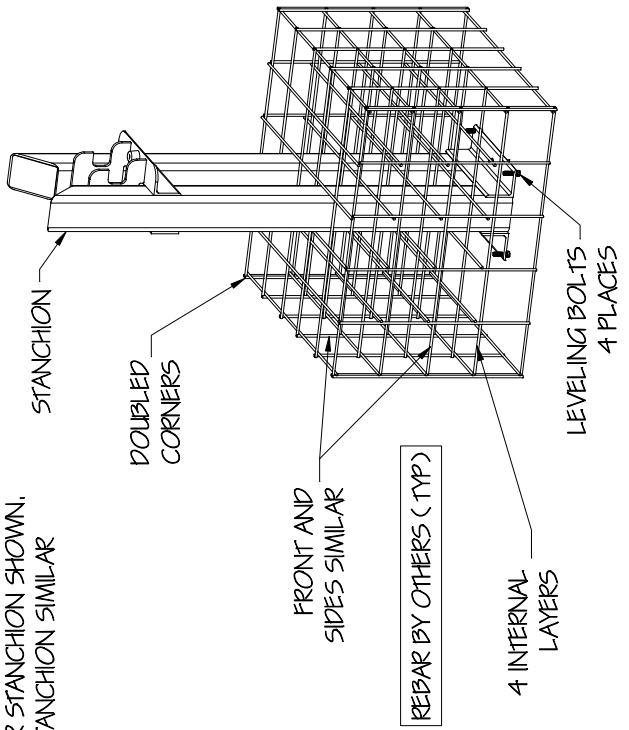
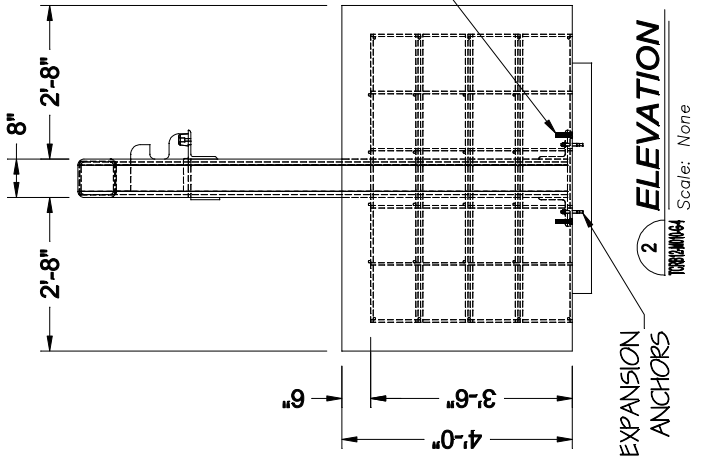
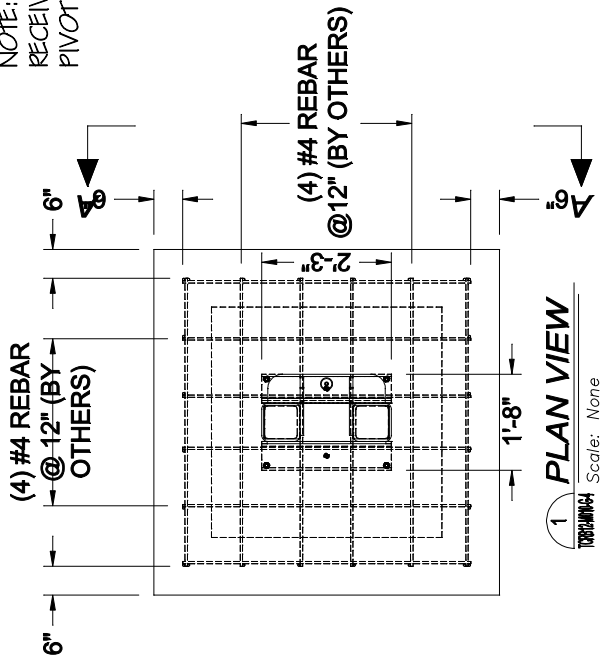
1 FOUNDATION PLAN
Scale: None

NOTES:
1. CLEAR OPENING IS MEASURED IN BETWEEN STANCHIONS (TUBE TO TUBE)

PROJECT: TCRB12-M010 Generic R1 DIRECTOR/CAD FILE: TCRB12-M010-G4		ARCHITECT/ENGINEER:		DRAWN BY: NJD DATE: 10/3/16 CHECKED BY: SLK DATE: 10/3/16 SCALE: 10/3/16 AS NOTED REVISION LEVEL: R1	
SHEET NUMBER: 4 OF 4 DRAWING NUMBER: TCRB12-M010-G4		CONTRACTOR: Tymetal Generic TCRB-12 Manual Crash Beam Foundations		SECURITY GATES & PERIMETER SOLUTIONS 678 WILBUR AVENUE GREENWICH, N.Y. 12834 PH: (800) 328-4283 - FX: (518) 692-9404	



NOTE:
RECEIVER STANCHION SHOWN,
PIVOT STANCHION SIMILAR



- NOTES:
- FOUNDATIONS SHOWN ARE BASED ON AVERAGE SOIL AND SITE CONDITIONS. FOUNDATIONS MUST BE IN ACCORDANCE WITH ALL LOCAL CODES, AND SHOULD BE REVIEWED BY A LOCAL ENGINEER.
 - PIERS REQUIRED IN AREAS WHERE FROST LINE IS BELOW FOUNDATIONS.
 - TYMETAL RECOMMENDS ALL SITE CONDITIONS AND IN SITU SOILS BE REVIEWED BY A QUALIFIED ENGINEER. MINIMUM SOIL BEARING CAPACITY OF 940 PSF AND BACKFILL COMPACTION TO A DENSITY OF NOT LESS THAN 90% MAXIMUM DRY DENSITY ARE REQUIRED BY TYMETAL. TYMETAL WILL NOT BE RESPONSIBLE FOR FAILED GATE OPERATIONS CAUSED BY UNSTABLE SOIL CONDITIONS. PROJECT SPECIFIC SOIL CAPACITY AND COMPACTION REQUIREMENTS WHEN GREATER THAN SPECIFIED BY TYMETAL. SUPERSEDE TYMETAL REQUIREMENTS, PLEASE CONSULT WITH YOUR PROJECT CIVIL ENGINEER FOR GUIDANCE.