



### POWERFUL PROTECTION

Closing openings from 12' to 24' wide, the TYMETAL TCRB-4 is a pivoting crash tested beam.

It includes an aluminum arm assembly, hinge stanchion, and receiver stanchion. The TCRB-4 can be operated manually (using a counterweight), electro-mechanically, or by a hydraulic power unit.

## ASTM F2656-07 M30 P1 CERTIFIED

### COMPACT



A small footprint and vertical travel make this barrier arm the ideal solution for points of vehicle ingress and egress located in areas with limited space.

### AESTHETIC DESIGN



All of the steel components are painted black and the aluminum square arm is powder coated white with DOT approved reflective tape for increased visibility.

### TESTED



Our TCRB-4 successfully stopped a 15,000 pound truck traveling at 30 mph during an ASTM Certification crash test.

### ADVANCED CONTROLS

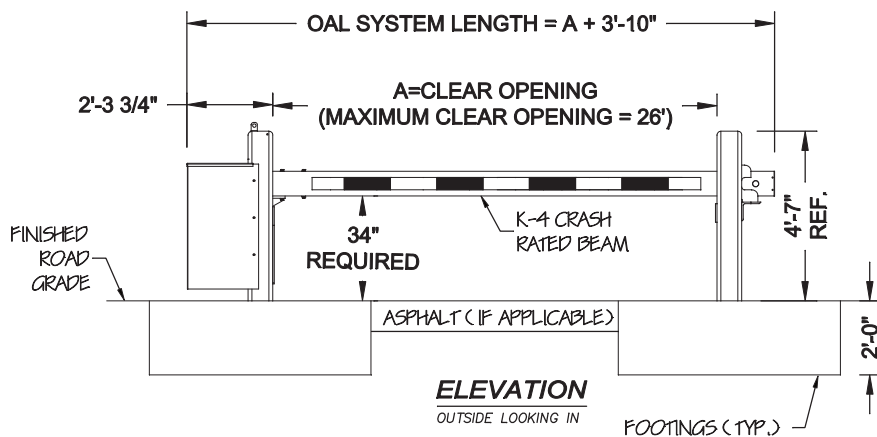
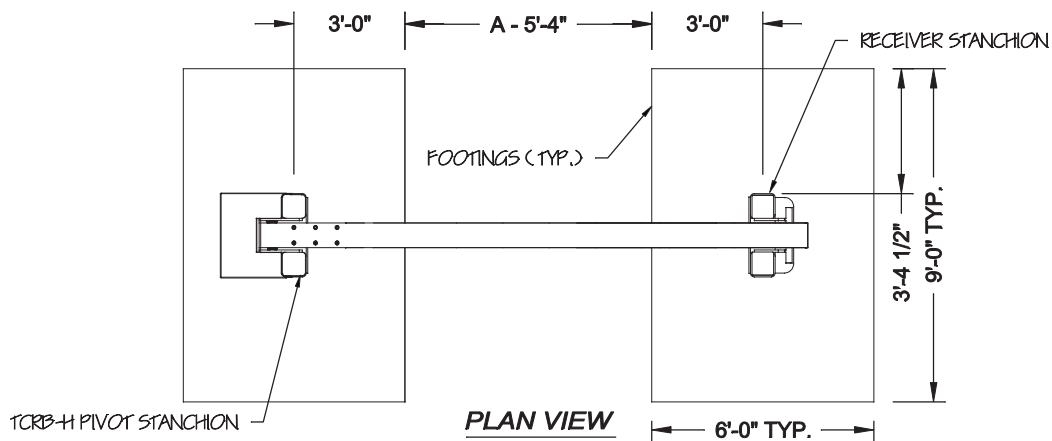


Featuring a built in programmable logic controller and variable frequency drive, the TYMETAL TCRB-4 Crash Tested Beam can be tailored to your site's unique traffic patterns.



## STANDARD FEATURES

- ASTM F2656-07 M30 P1 Certified
- Closes openings from 12' - 24' wide
- Built in programmable logic controller
- 208/230v single phase
- 208/230/460v three phase
- Manual, electro-mechanical, or hydraulic operation
- 1 Year Limited Warranty



**NOTES:**

1. TYMETAL RECOMMENDS ALL SITE CONDITIONS BE REVIEWED BY A QUALIFIED ENGINEER. MINIMUM IN-SITU SOIL BEARING CAPACITY OF 940 PSF AND BACKFILL COMPACTION TO A DENSITY OF NOT LESS THAN 95% MAXIMUM DRY DENSITY ARE REQUIRED. TYMETAL WILL NOT BE RESPONSIBLE FOR FAILED GATE OPERATIONS CAUSED BY UNSTABLE SOIL CONDITIONS.

2. FOUNDATIONS SHOWN ARE BASED ON AVERAGE SOIL AND SITE CONDITIONS. FOUNDATIONS MUST BE IN ACCORDANCE WITH ALL LOCAL CODES, AND SHOULD BE REVIEWED BY A LOCAL ENGINEER. FOUNDATION DESIGNS ARE NOT BY TYMETAL.

3. EXTENDED FOOTINGS REQUIRED IN AREAS WHERE FROST LINE IS BELOW FOUNDATIONS.

For more information on our TCRB-4 Crash Beam  
Contact TYMETAL at 1.800.328.GATE (4283)

678 Wilbur Avenue Greenwich, NY 12834  
4501 Dixie Farm Road Pearland, TX 77581

