



POWERFUL PROTECTION

Closing openings from 12' to 22' wide, the TCRB-12 Crash Rated Beam is a pivoting barrier arm which offers a higher level of crash protection than our TCGR-4.

It includes an aluminum arm assembly, hinge stanchion, receiver stanchion, and can be operated either manually (using a counterweight), electro-mechanically, or by an electro-hydraulic power unit.

ASTM F2656-07 M50 P1 CERTIFIED

EFFICIENT



The TCRB-12 uses an electric motor, gearbox, and chain assembly to operate the arm to the full up and down position. The electro-mechanical unit is self contained and is attached directly to the hinge stanchion.

SOFT START & STOP



The electro-hydraulically operated system comes standard with built in soft start and stop control. This advanced control technique allows for faster operating speeds, yet reduces the mechanical wear from the shock associated with a sudden stop.

TESTED



Our TCRB-12 successfully stopped a 15,000 pound truck traveling at 50 mph during an ASTM Certification crash test.

AESTHETIC DESIGN

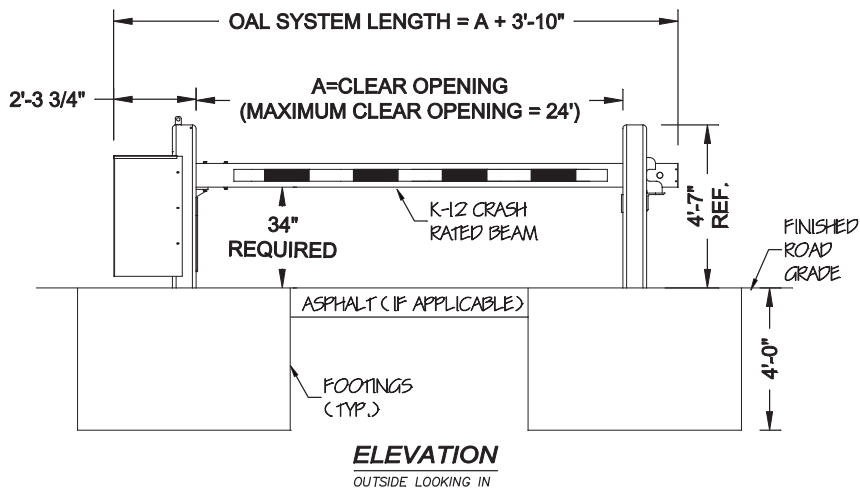
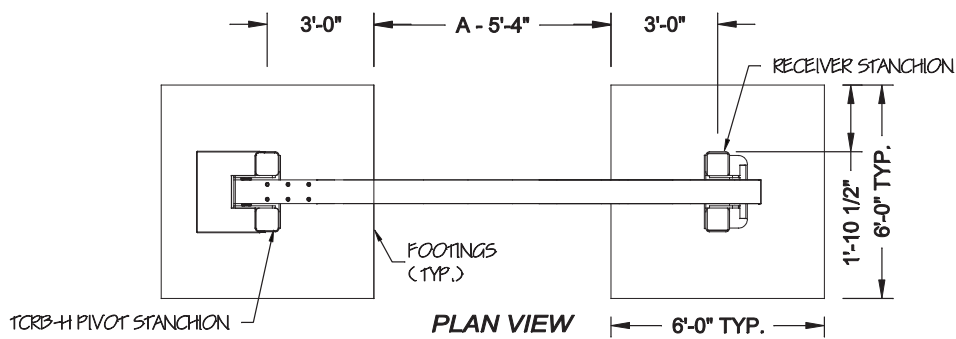


All of the steel components are painted black, and the arm is an aluminum square tube, powder coated white, with DOT approved reflective tape.



STANDARD FEATURES

- ASTM F2656-07 M50 P1 Certified
- NEMA All-Weather enclosure
- Hydraulic oil heater
- PLC Logic Controller
- Customizable operating parameters
- 208-240 single and three phase
- Manual, hydraulic, or electro-mechanical operation
- 1 Year Limited Warranty



NOTES:

1. TYMETAL RECOMMENDS ALL SITE CONDITIONS BE REVIEWED BY A QUALIFIED ENGINEER. MINIMUM SITU SOIL BEARING CAPACITY OF 940 PSF AND BACKFILL COMPACTION TO A DENSITY OF NOT LESS THAN 95% MAXIMUM DRY DENSITY ARE REQUIRED. TYMETAL WILL NOT BE RESPONSIBLE FOR FAILED GATE OPERATIONS CAUSED BY UNSTABLE SOIL CONDITIONS.
2. FOUNDATIONS SHOWN ARE BASED ON AVERAGE SOIL AND SITE CONDITIONS. FOUNDATIONS MUST BE IN ACCORDANCE WITH ALL LOCAL CODES. AND SHOULD BE REVIEWED BY A LOCAL ENGINEER.

**For more information on our TCRB-12 Crash Rated Beam
Contact TYMETAL at 1.800.328.GATE (4283)**

678 Wilbur Avenue Greenwich, NY 12834
4501 Dixie Farm Road Pearland, TX 77581

