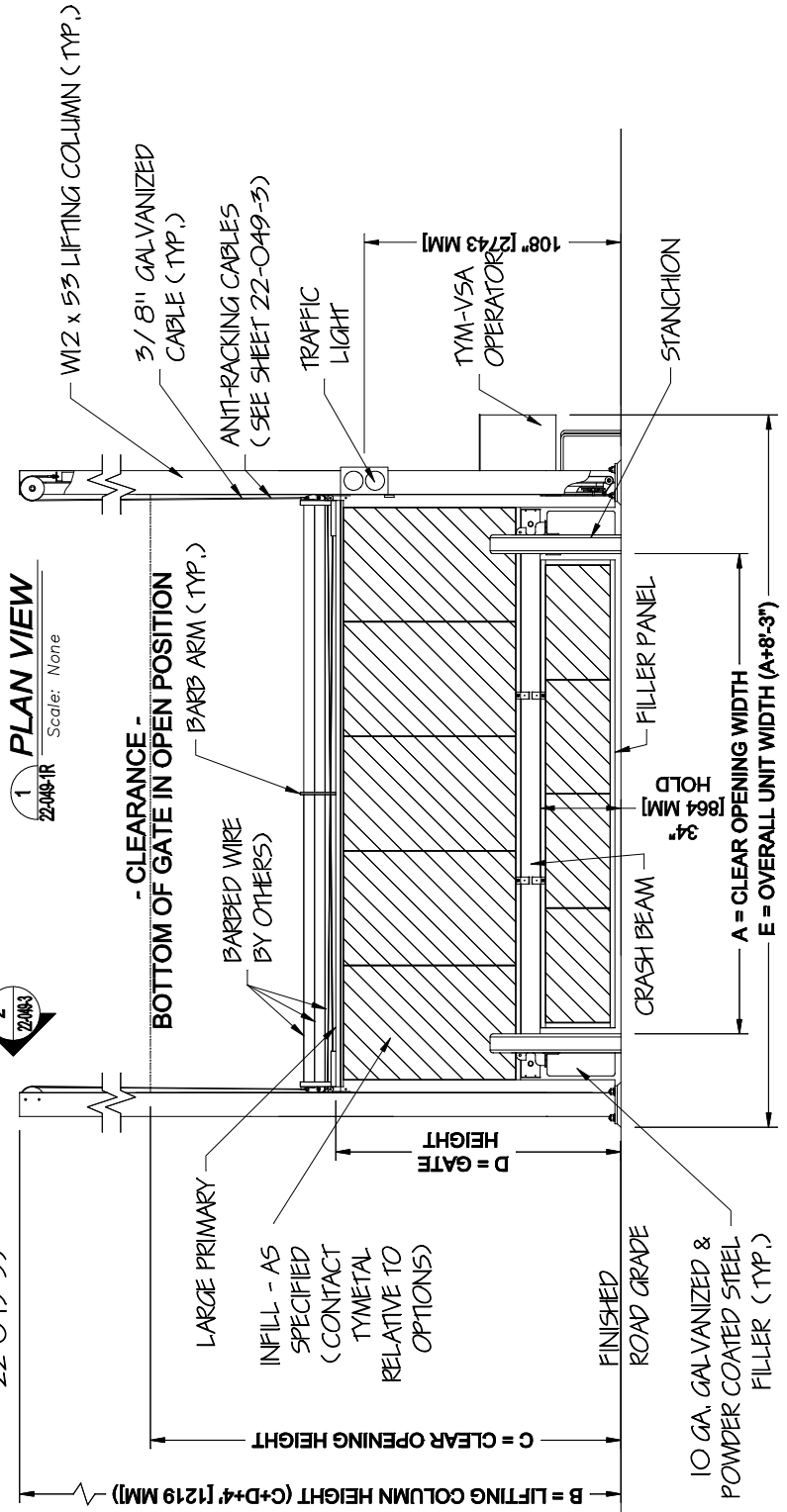
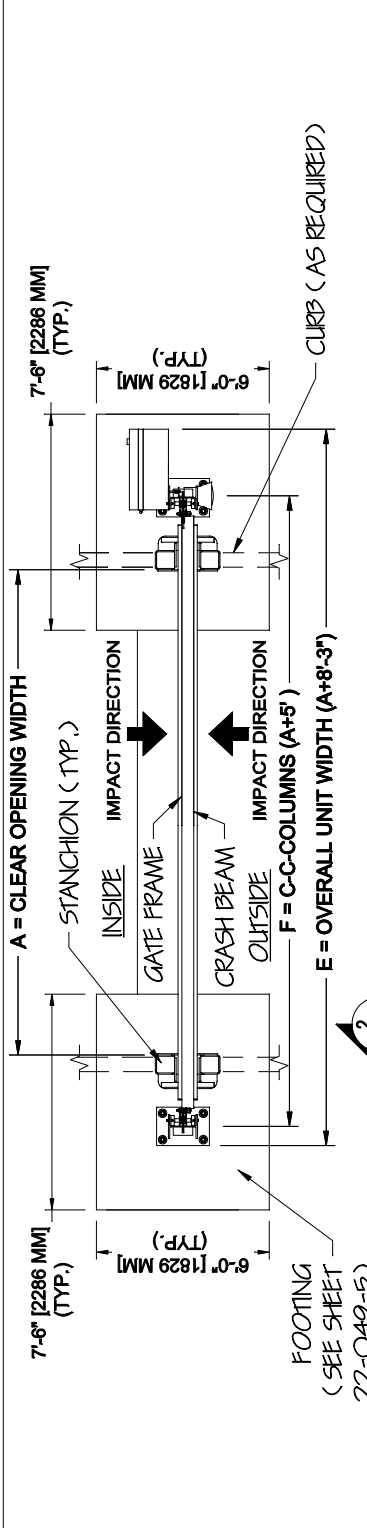


22-049-1R
 DIRECTOR\CAD FILE:
 SHEET NUMBER:
 1 of 5
 DRAWING NUMBER:
 A-22-049-1R

PROJECT:
 SUBJECT:
 Heavy Duty K12 Crash Engineered Vertical Lift Gate
 CONTRACTOR:
 ARCHITECT/ENGINEER:
 R2

REVISION LEVEL:
 As Noted
 SCALE:
 DATE: 5/4/22
 CHECKED BY: BGG/dk
 DATE: 3/26/24
 DRAWN BY: NDB

Tymetal
 SECURITY GATES & PERIMETER SOLUTIONS
 678 MLBUR AVENUE GREENWICH, N.Y. 12834
 PH: (800) 328-4283 - FX: (518) 692-9404




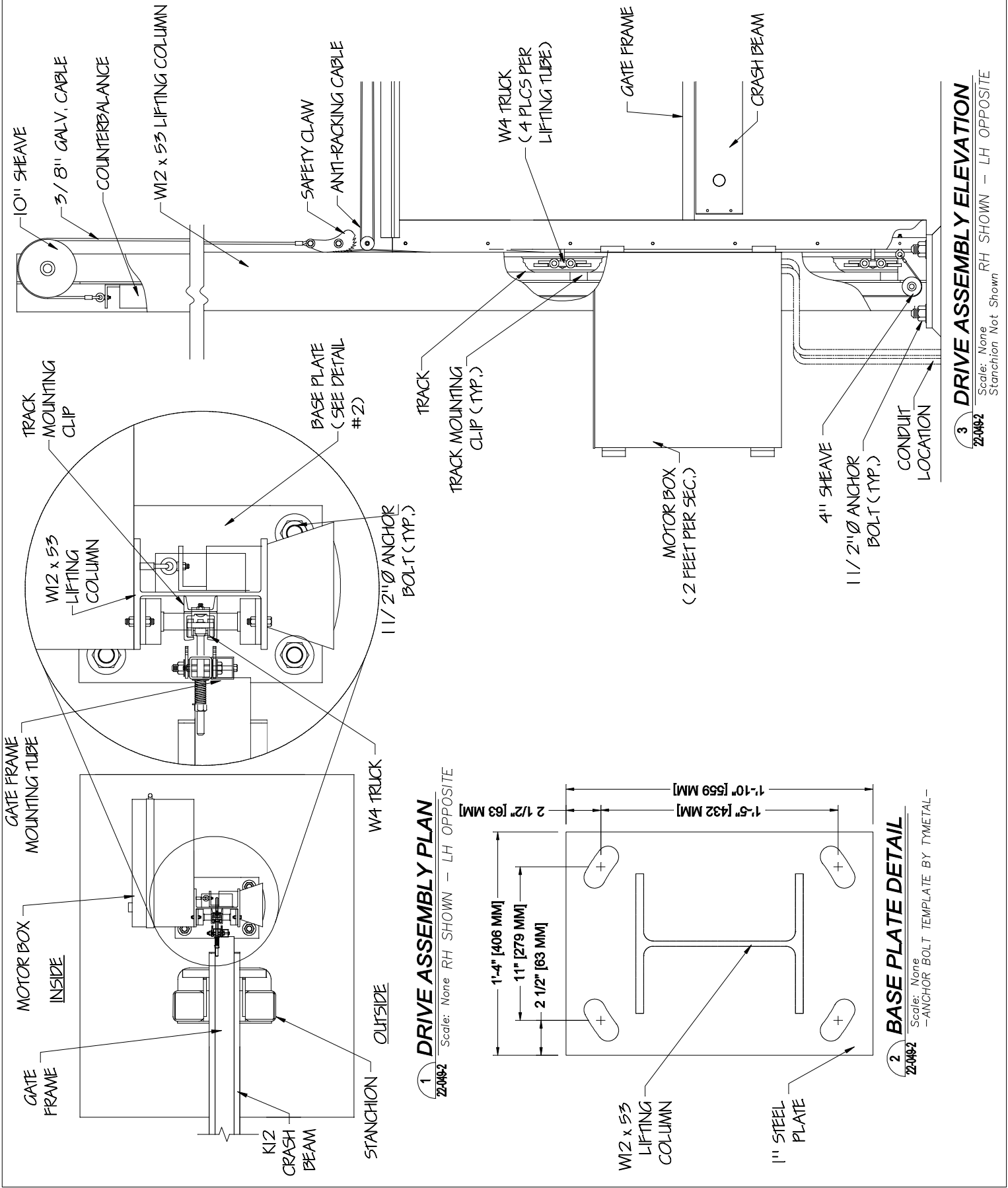
GATE # _____

*** TYPICAL CLEAR OPENING HEIGHT IS 15'. CONTACT TYMETAL IF HIGHER.
 ** CLEAR OPENING WIDTHS UP TO 26' PROVIDE ASTM F2656 M50-P1 ENGINEERED CRASH RATING.

CRITICAL DIMENSION CHART

	A*	D	GATE HEIGHT	D
A	CLEAR OPENING WIDTH			
B	LIFTING COLUMN HEIGHT	C + D + 4'	OVERALL UNIT WIDTH	A + 8'-3"
C	CLEAR OPENING HEIGHT	C**	C TO C COLUMNS	A + 5'

A-22-049-2 DRAWING NUMBER: 2 of 5 SHEET NUMBER: 2209 K12 Steel Stud Detail DIRECTORY\CAD FILE:	CONTRACTOR: Heavy Duty K12 Crash Engineered Vertical Lift Gate Details	REVISION LEVEL: As Noted SCALE: 5/4/22 DATE: BGG/dk 3/26/24 DATE: NDB	 TYMETAL SECURITY GATES & PERIMETER SOLUTIONS 678 MLBUR AVENUE GREENWICH, N.Y. 12834 PH: (800) 328-4283 - FX: (518) 692-9404
	ARCHITECT/ENGINEER: 2209 K12 Steel Stud Detail	PROJECT: Heavy Duty K12 Crash Engineered Vertical Lift Gate Details	



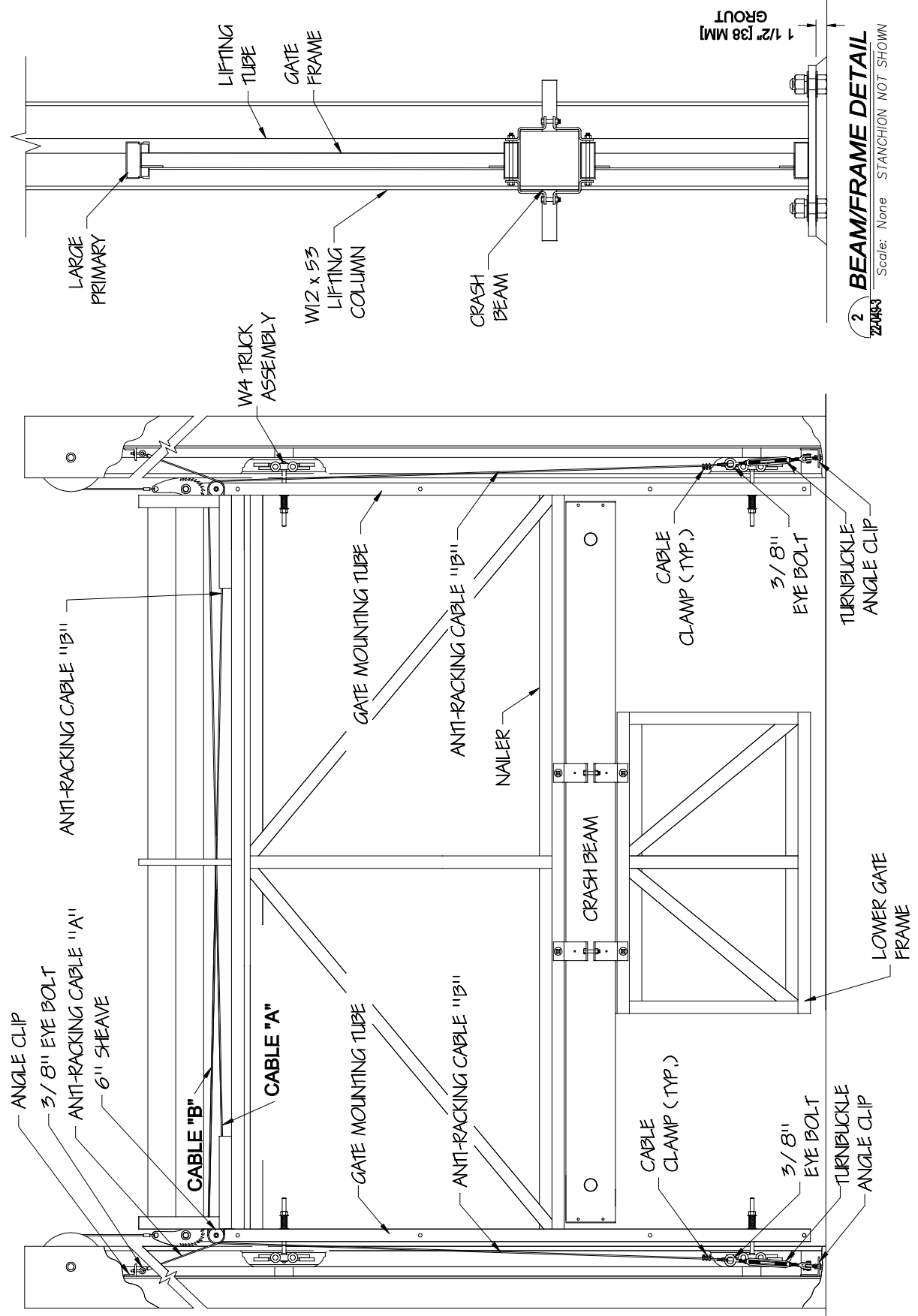
A-22-049-3
 DRAWING NUMBER:
 3 of 5
 SHEET NUMBER:
 2209 MLBUR Steel Shed Drawn in NY
 DIRECTORY\CAD FILE:

PROJECT:
 SUBJECT:
 CONTRACTOR:
 ARCHITECT/ENGINEER:

DRAWN BY: NDB
 DATE: 3/26/24
 CHECKED BY: BGG/dk
 DATE: 5/4/22
 SCALE: As Noted
 REVISION LEVEL: R2

TYMETAL
 SECURITY GATES & PERIMETER SOLUTIONS
 678 MLBUR AVENUE GREENWICH, N.Y. 12834
 PH: (800) 328-4283 - FX: (518) 692-9404

- INFILL NOT SHOWN FOR CLARITY -



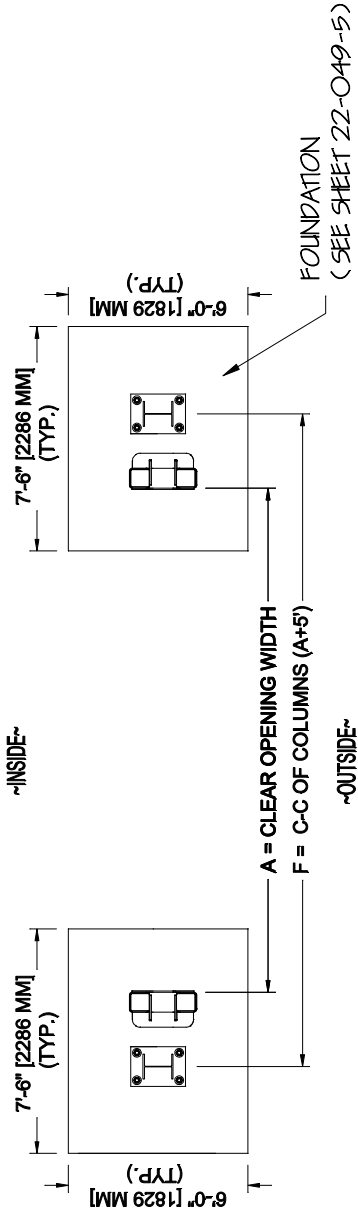
2 BEAM/FRAME DETAIL
 Scale: None STANCHION NOT SHOWN
 220903

1 ANTI-RACKING MECHANISM
 Scale: None
 220903

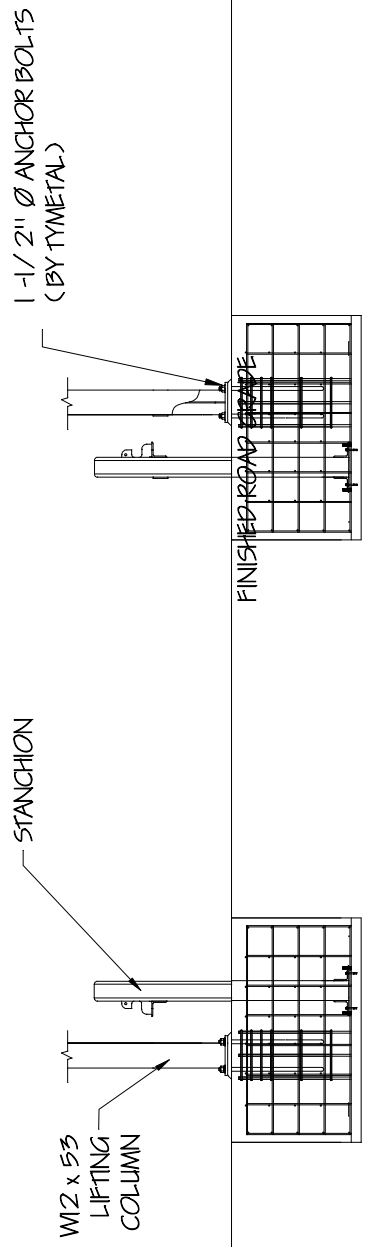
A-22-049-4
 DRAWING NUMBER:
4 OF 5
 SHEET NUMBER:
 22-049-4
 DIRECTOR/CAD FILE:

PROJECT:
 CONTRACTOR:
 SUBJECT:
Heavy Duty K12 Crash Engineered Vertical Lift Gate Footings
 ARCHITECT/ENGINEER:
 SCALE:
As Noted
 REVISION LEVEL:
R2
 DRAWN BY:
NDB
 DATE:
3/26/24
 CHECKED BY:
BGG/dk
 DATE:
5/4/22

Tymetal
 SECURITY GATES & PERIMETER SOLUTIONS
 678 MILBURN AVENUE GREENWICH, N.Y. 12834
 PH:(800) 328-4283 - FX:(518) 692-9404



1 PLAN VIEW
 22-049-4
 Scale: None



2 ELEVATION
 22-049-4
 Scale: None

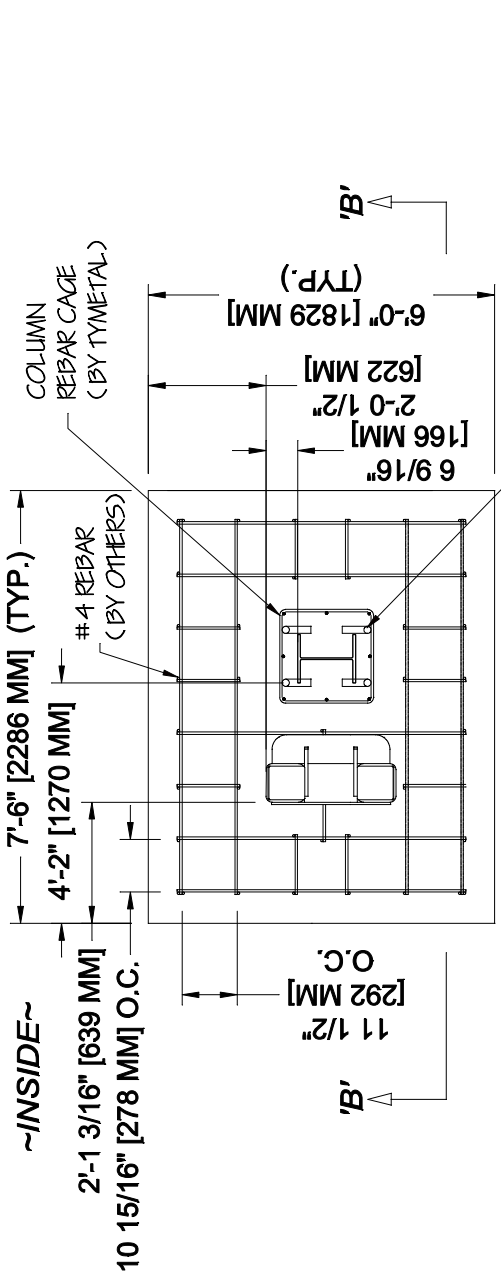
- NOTES:**
- FOUNDATIONS SHOWN ARE BASED ON AVERAGE SOIL AND SITE CONDITIONS. FOUNDATIONS MUST BE IN ACCORDANCE WITH ALL LOCAL CODES, AND SHOULD BE REVIEWED BY A LOCAL ENGINEER.
 - TYMETAL RECOMMENDS ALL SITE CONDITIONS AND IN SITU SOILS BE REVIEWED BY A QUALIFIED ENGINEER. MINIMUM SOIL BEARING CAPACITY OF 940 PSF AND BACKFILL COMPACTION TO A DENSITY OF NOT LESS THAN 95% MAXIMUM DRY DENSITY ARE REQUIRED. TYMETAL WILL NOT BE RESPONSIBLE FOR FAILED GATE OPERATIONS CAUSED BY UNSTABLE SOIL CONDITIONS.

A-22-049-5
 DRAWING NUMBER:
5 of 5
 SHEET NUMBER:
 2209 PLATE Steel Detail Division NY
 DIRECTORY\CAD FILE:

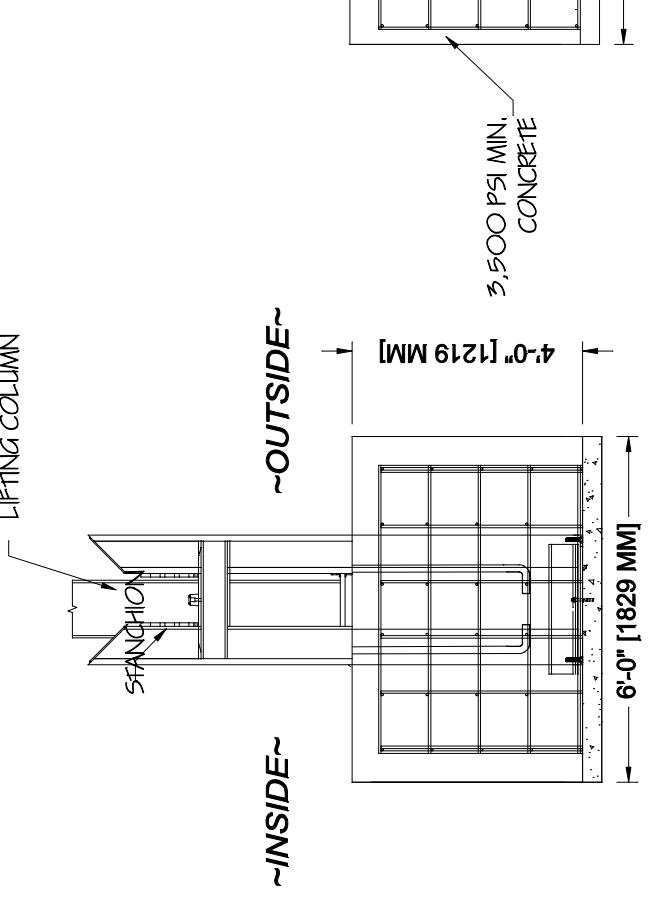
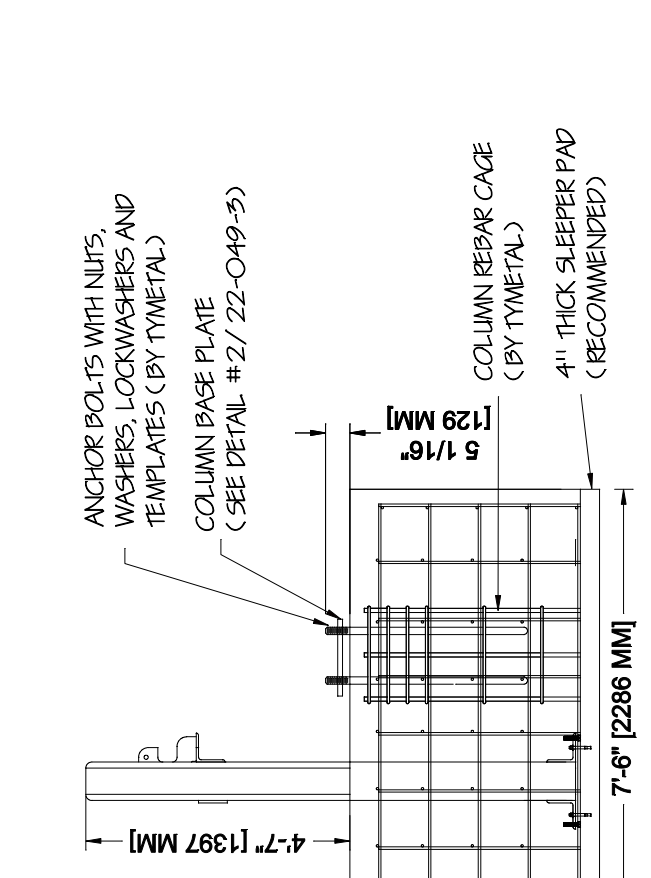
PROJECT:
 CONTRACTOR:
 SUBJECT: **Heavy Duty K12 Crash Engineered Vertical Lift Gate Footings**
 ARCHITECT/ENGINEER:

DRAWN BY: **NDB**
 DATE: **3/26/24**
 CHECKED BY: **BGG**
 DATE: **5/4/22**
 SCALE: **As Noted**
 REVISION LEVEL: **R2**

Tymetal
 SECURITY GATES & PERIMETER SOLUTIONS
 678 MLBUR AVENUE GREENWICH, N.Y. 12834
 PH: (800) 328-4283 - FX: (518) 692-9404



ANCHOR BOLTS WITH NUTS, WASHERS AND LOCKWASHERS (BY TYMETAL)



ANCHOR BOLTS WITH NUTS, WASHERS AND LOCKWASHERS (BY TYMETAL)

ANCHOR BOLTS WITH NUTS, WASHERS, LOCKWASHERS AND TEMPLATES (BY TYMETAL)

COLUMN BASE PLATE (SEE DETAIL # 2 / 22-049-5)

COLUMN REBAR CAGE (BY TYMETAL)

4" THICK SLEEPER PAD (RECOMMENDED)

3,500 PSI MIN. CONCRETE