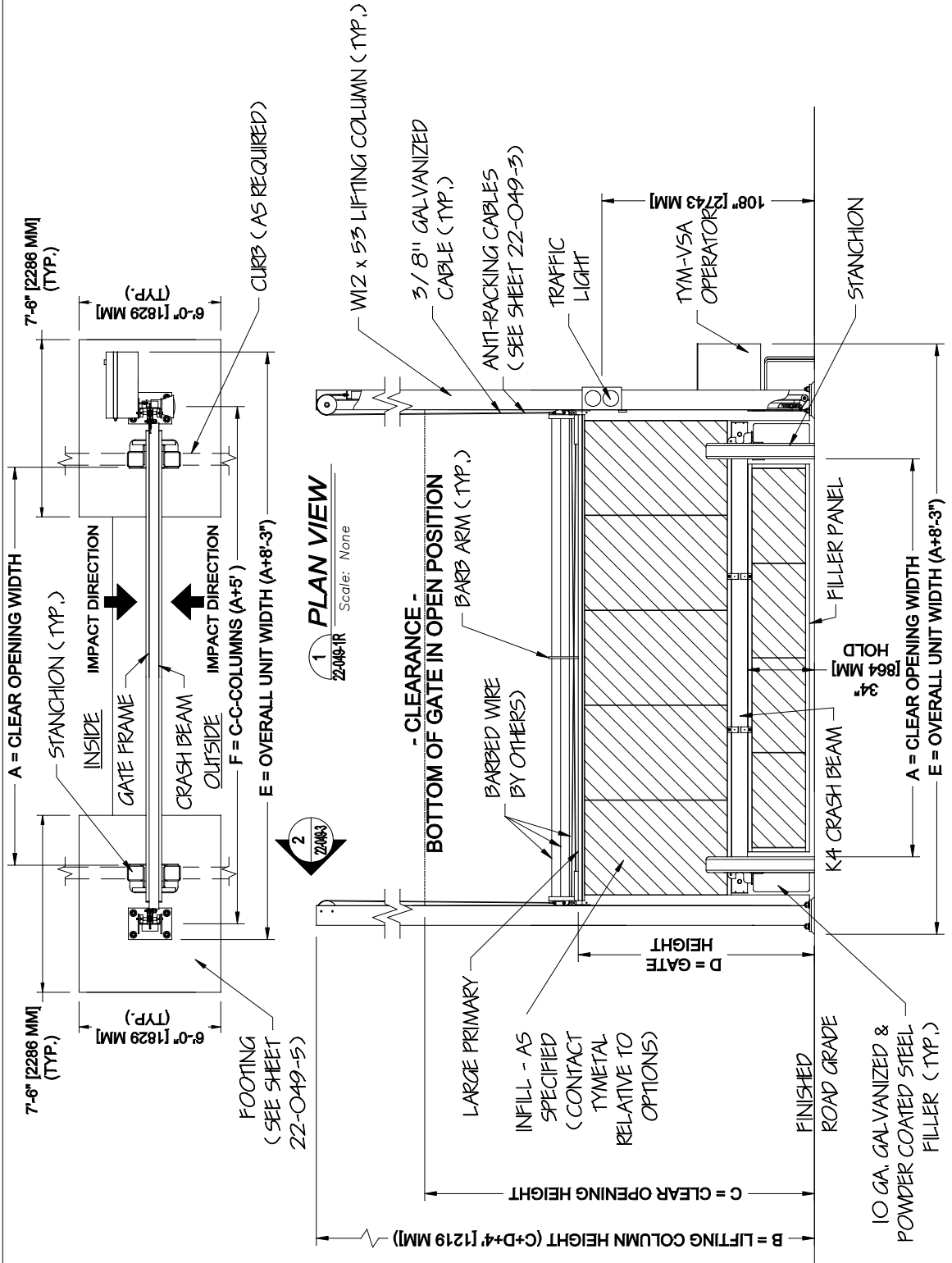


22-049-1R
 DIRECTOR\GAD FILE:
 SHEET NUMBER:
 1 of 5
 DRAWING NUMBER:
 A-22-049-1R

PROJECT:
 SUBJECT:
 Heavy Duty K4 Crash Engineered Vertical Lift Gate
 CONTRACTOR:
 ARCHITECT/ENGINEER:

DRAWN BY:
 NDB
 DATE:
 3/26/24
 CHECKED BY:
 BGG/dk
 DATE:
 5/4/22
 SCALE:
 As Noted
 REVISION LEVEL:
 R2

Tymetal
 SECURITY GATES & PERIMETER SOLUTIONS
 678 MLBUR AVENUE GREENWICH, N.Y. 12834
 PH: (800) 328-4283 - FX: (518) 692-9404




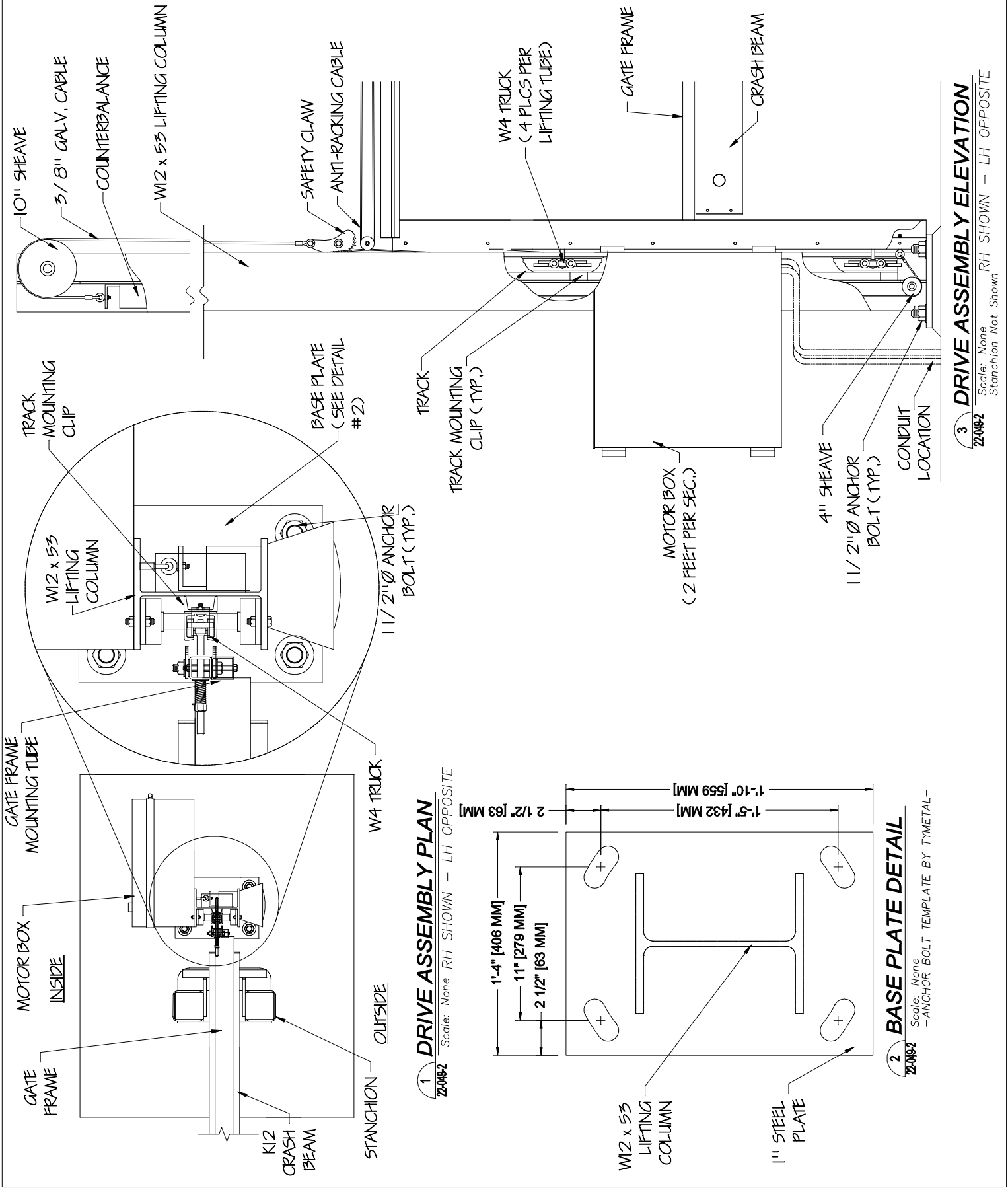
GATE # _____

*** TYPICAL CLEAR OPENING HEIGHT IS 15'. CONTACT TYMETAL IF HIGHER.
 * CLEAR OPENING WIDTHS UP TO 26' PROVIDE ASTM F2656 M30-P1 ENGINEERED CRASH RATING.

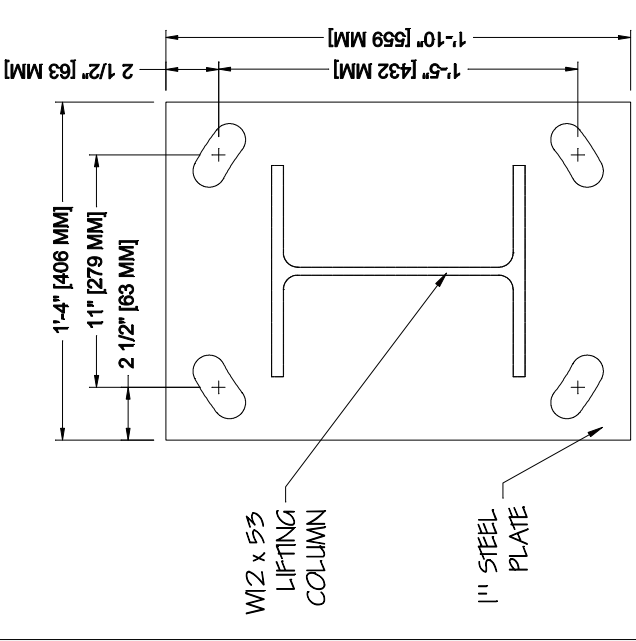
CRITICAL DIMENSION CHART

A	A*	D	GATE HEIGHT	D
B	C + D + 4'	E	OVERALL UNIT WIDTH	A + 8'-3"
C	C**	F	C TO C COLUMNS	A + 5'

A-22-049-2 DRAWING NUMBER: 2 of 5 SHEET NUMBER: 2209 T.M. Steel Shop Detail Division NY DIRECTORY/CAD FILE:	ARCHITECT/ENGINEER:	REVISION LEVEL: R2	 SECURITY GATES & PERIMETER SOLUTIONS 678 MLBUR AVENUE GREENWICH, N.Y. 12834 PH: (800) 328-4283 - FX: (518) 692-9404
	CONTRACTOR:	SCALE: As Noted	
SUBJECT: Heavy Duty K4 Crash Engineered Vertical Lift Gate Details	DATE: 5/4/22	CHECKED BY: BGG/dk	
PROJECT:	DATE: 3/26/24	DRAWN BY: NDB	



1 DRIVE ASSEMBLY PLAN
 Scale: None RH SHOWN - LH OPPOSITE



2 BASE PLATE DETAIL
 Scale: None
 -ANCHOR BOLT TEMPLATE BY TYMETAL-

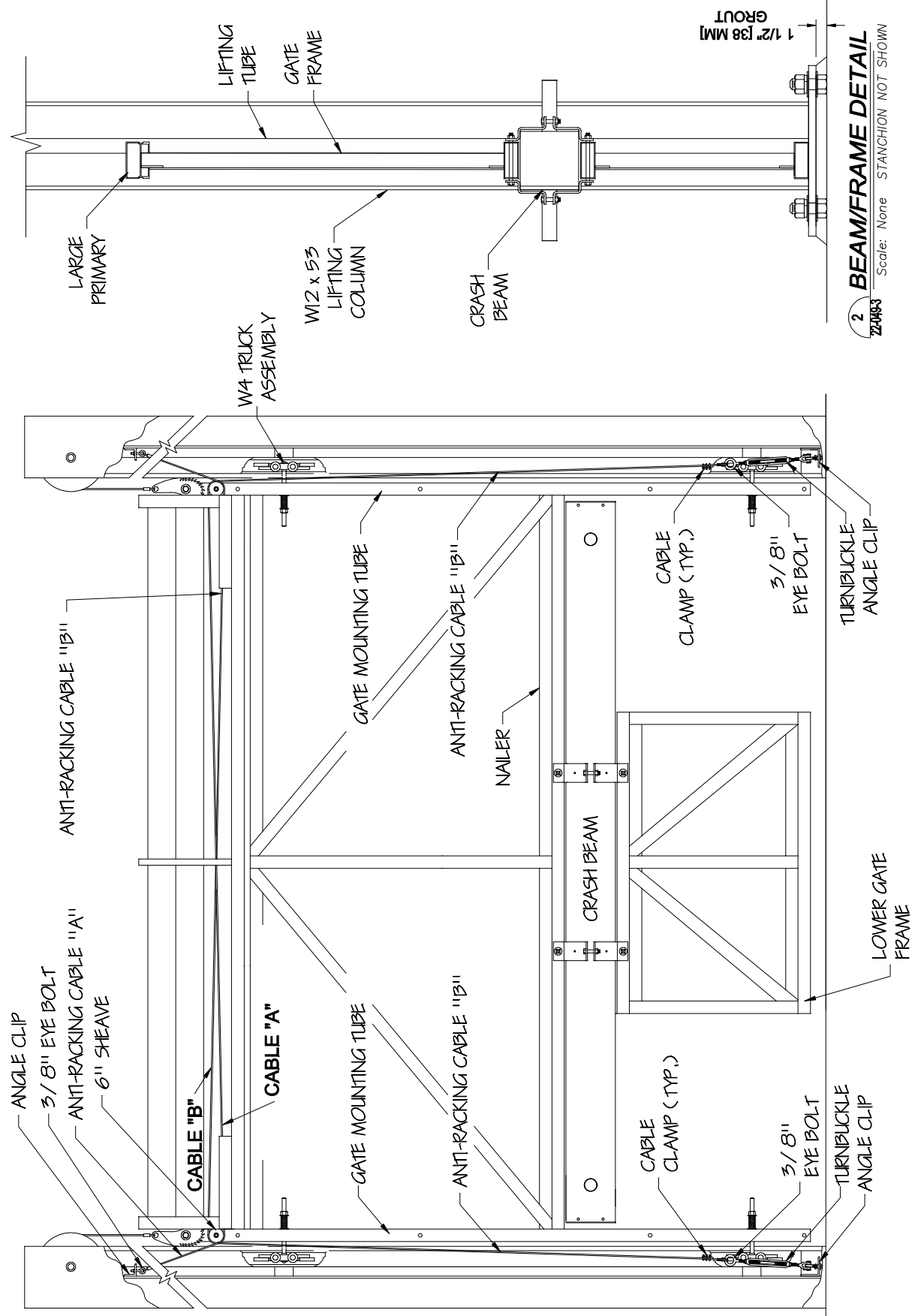
A-22-049-3
 DRAWING NUMBER:
3 of 5
 SHEET NUMBER:
 2209 MLBUR Steel Shed Draw (Dimension N)

PROJECT: _____
 CONTRACTOR: _____
 SUBJECT: **Heavy Duty K4 Crash Engineered Vertical Lift Gate Details**
 ARCHITECT/ENGINEER: _____

DRAWN BY: **NDB**
 DATE: **3/26/24**
 CHECKED BY: **BGG/dk**
 DATE: **5/4/22**
 SCALE: **As Noted**
 REVISION LEVEL: **R2**

TYMETAL
 SECURITY GATES & PERIMETER SOLUTIONS
 678 MLBUR AVENUE GREENWICH, N.Y. 12834
 PH: (800) 328-4283 - FX: (518) 692-9404

- INFILL NOT SHOWN FOR CLARITY -



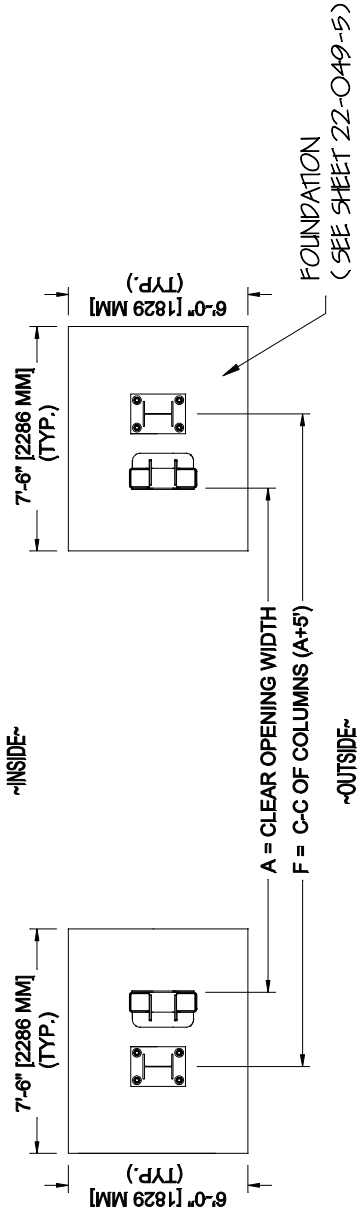
2 BEAM/FRAME DETAIL
 Scale: None STANCHION NOT SHOWN

1 ANTI-RACKING MECHANISM
 Scale: None

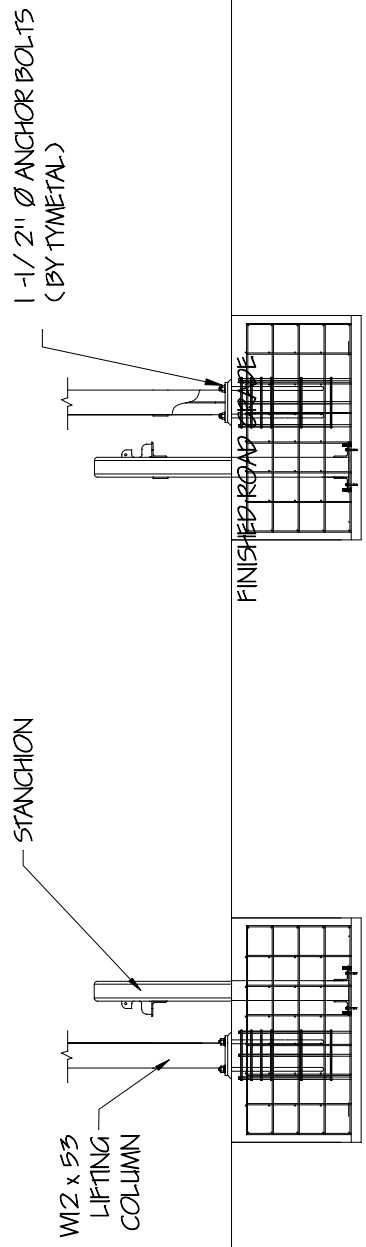
A-22-049-4
 DRAWING NUMBER:
4 OF 5
 SHEET NUMBER:
 22-049-4
 DIRECTORY/CAD FILE:

PROJECT:
 SUBJECT:
Heavy Duty K4 Crash Engineered Vertical Lift Gate Footings
 CONTRACTOR:
 ARCHITECT/ENGINEER:
 DRAWN BY: **NDB**
 DATE: **3/26/24**
 CHECKED BY: **BGG/dk**
 DATE: **5/4/22**
 SCALE:
As Noted
 REVISION LEVEL:
R2

Tymetal
 SECURITY GATES & PERIMETER SOLUTIONS
 678 MILBURN AVENUE GREENWICH, N.Y. 12834
 PH:(800) 328-4283 - FX:(518) 692-9404



1 PLAN VIEW
 22-049-4
 Scale: None



2 ELEVATION
 22-049-4
 Scale: None

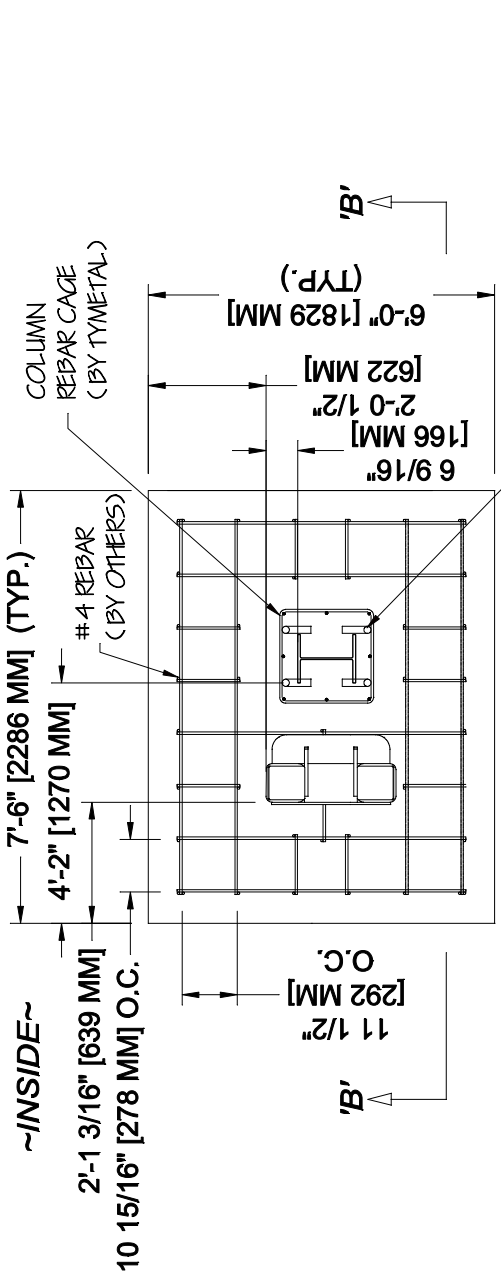
- NOTES:**
- FOUNDATIONS SHOWN ARE BASED ON AVERAGE SOIL AND SITE CONDITIONS. FOUNDATIONS MUST BE IN ACCORDANCE WITH ALL LOCAL CODES, AND SHOULD BE REVIEWED BY A LOCAL ENGINEER.
 - TYMETAL RECOMMENDS ALL SITE CONDITIONS AND IN SITU SOILS BE REVIEWED BY A QUALIFIED ENGINEER. MINIMUM SOIL BEARING CAPACITY OF 940 PSF AND BACKFILL COMPACTION TO A DENSITY OF NOT LESS THAN 95% MAXIMUM DRY DENSITY ARE REQUIRED. TYMETAL WILL NOT BE RESPONSIBLE FOR FAILED GATE OPERATIONS CAUSED BY UNSTABLE SOIL CONDITIONS.

A-22-049-5
 DRAWING NUMBER:
5 of 5
 SHEET NUMBER:
 2209 V.A.R. Steel Detail Division NY
 DIRECTORY\CAD FILE:

PROJECT:
 CONTRACTOR:
 SUBJECT: **Heavy Duty K4 Crash Engineered Vertical Lift Gate Footings**
 ARCHITECT/ENGINEER:

DRAWN BY: **NDB**
 DATE: **3/26/24**
 CHECKED BY: **BGG**
 DATE: **5/4/22**
 SCALE:
As Noted
 REVISION LEVEL: **R2**

Tymetal
 SECURITY GATES & PERIMETER SOLUTIONS
 678 MLBUR AVENUE GREENWICH, N.Y. 12834
 PH: (800) 328-4283 - FX: (518) 692-9404



ANCHOR BOLTS WITH NUTS, WASHERS AND LOCKWASHERS (BY TYMETAL)

ANCHOR BOLTS WITH NUTS, WASHERS, LOCKWASHERS AND TEMPLATES (BY TYMETAL)
 COLUMN BASE PLATE
 (SEE DETAIL # 2 / 22-049-5)

