

3 VIEW A-A
 Scale: None

2 ELEVATION
 Scale: None

CRITICAL DIMENSION CHART

| | | |
|---|-----------------------|---------|
| A | CLEAR OPENING | 24' MAX |
| B | C-C STANCHIONS | |
| C | BETWEEN FOOTINGS | |
| D | CLEAR VERTICAL HEIGHT | |

- NOTES:**
- GRADE ELEVATION MUST SLOPE AWAY FROM PIVOT STANCHION TO PREVENT ICE/WATER BUILDUP.
 - STANCHIONS ARE COATED WITH ZINC ENRICHED PRIMER AND PAINTED BLACK.
 - CRASH BEAM IS POWDER COATED WHITE WITH SHOP APPLIED REFLECTIVE TRAFFIC/VEHICULAR TAPE, RED AND WHITE, ALTERNATING, WEATHERPROOF. TAPE WILL BE FHWA - MUTCD COMPLIANT, BY TYMETAL, BOTH INBOUND AND OUTBOUND SIDES.

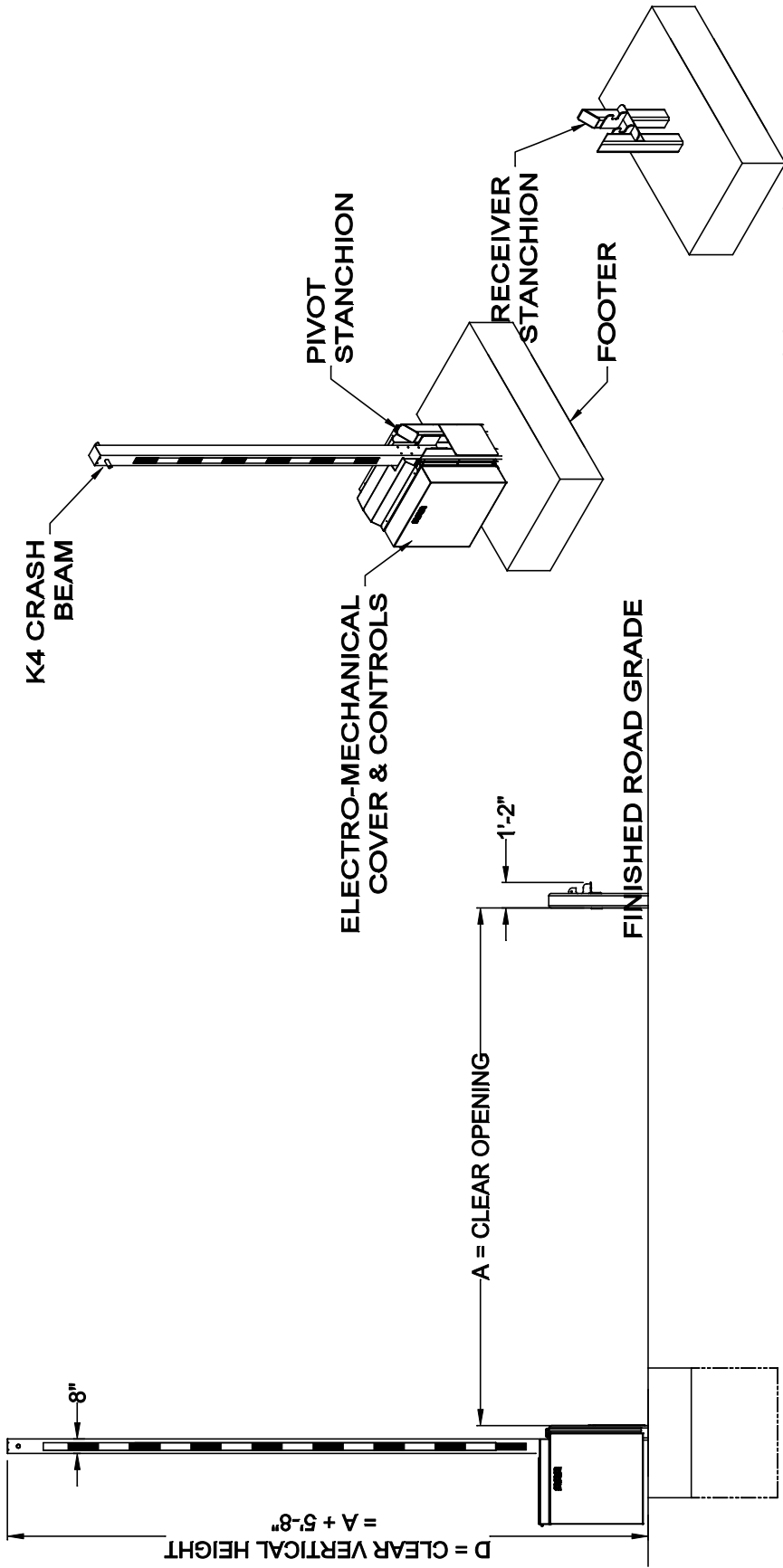
SEE NOTE 1 REGARDING GRADE

TCRB4-EM-A-001-2
 DIRECTOR\CAD FILE:
 SHEET NUMBER:
 2 of 4
 DRAWING NUMBER:
 TCRB4-EM-A-001-2

PROJECT:
 SUBJECT:
 Electro-Mechanical Crash Beam
 CONTRACTOR:
 ARCHITECT/ENGINEER:

DRAWN BY:
 BGG
 DATE:
 6/9/25
 CHECKED BY:
 JKT
 DATE:
 6/9/25
 SCALE:
 As Noted
 REVISION LEVEL:
 R2

Tymetal
 SECURITY GATES & PERIMETER SOLUTIONS
 678 MILBURN AVENUE GREENWICH, N.Y. 12834
 PH: (800) 328-4283 - FX: (518) 892-9404



2 ISOMETRIC
 Scale: None

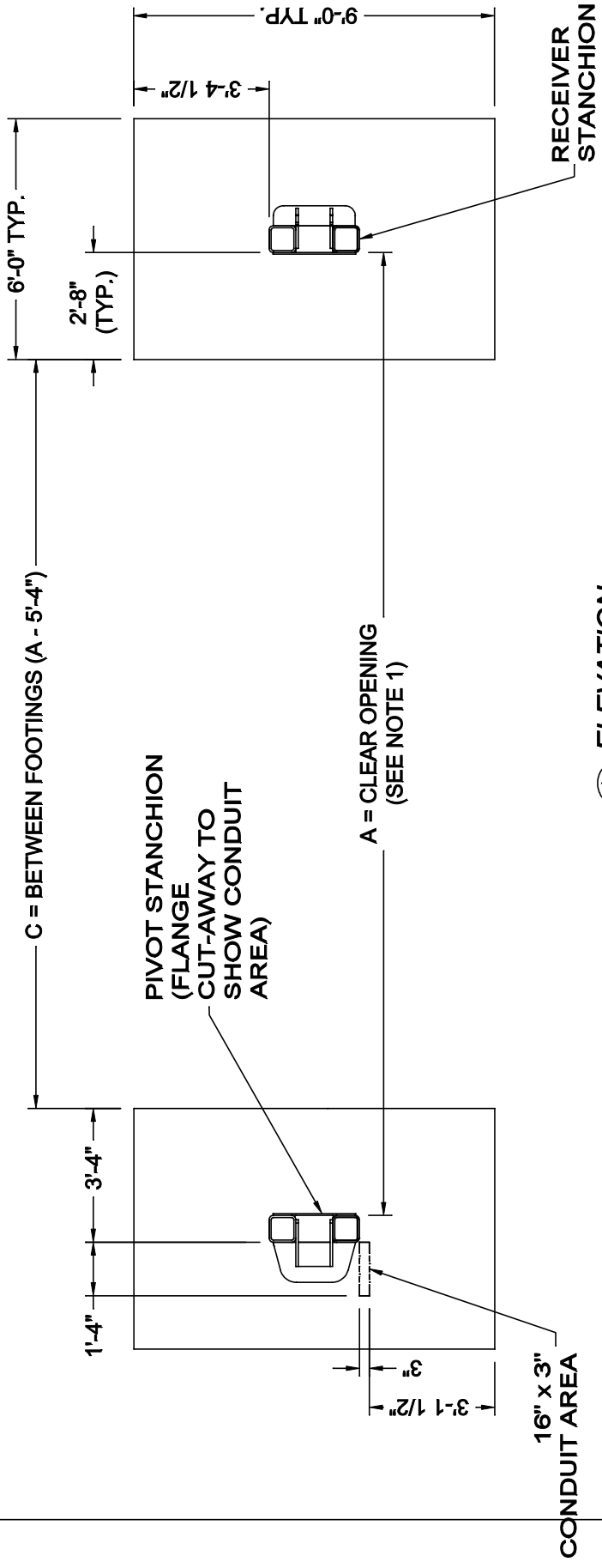
1 ELEVATION
 Scale: None

NOTES:
 1. TCRB BARRIER PRECAUTIONS: TYMETAL DOES NOT PROVIDE TRAFFIC OR SAFETY ENGINEERING SERVICES. VEHICLES AS WELL AS PEDESTRIANS MUST BE WARNED AS TO THE BARRIER'S PRESENCE AND OPERATION. THE OWNER/OPERATOR (END USER) OR FACILITY ARCHITECT SELECTING THIS CRASH BARRIER SHALL ASSUME RESPONSIBILITY FOR PROVIDING TRAFFIC AND SAFETY ENGINEERING, INCLUDING ALL NECESSARY SAFETY FEATURES TO BE USED AT EACH BARRIER LOCATION, INCLUDING, BUT NOT LIMITED TO: SIDEWALKS FOR PEDESTRIAN TRAFFIC, SUFFICIENT ROADWAY LIGHTING, CAUTION SIGNAGE, TRAFFIC LIGHTS, AUDIBLE WARNING ALERTS, SECONDARY TRAFFIC CONTROL DEVICES, GUARD/CONTROL BOOTHS.

| | |
|-----------------|----------|
| REVISION LEVEL: | R2 |
| SCALE: | As Noted |
| DATE: | 6/9/25 |
| CHECKED BY: | JKT |
| DATE: | 6/9/25 |
| DRAWN BY: | BGG |

| | |
|---------------------|--------------------|
| ARCHITECT/ENGINEER: | |
| CONTRACTOR: | |
| SUBJECT: | Foundation Details |
| PROJECT: | |

| | |
|--------------------|-------------------------|
| DIRECTOR/CAD FILE: | TCRBA-EM-1A-Up To 28 R2 |
| SHEET NUMBER: | 3 of 4 |
| DRAWING NUMBER: | TCRBA-EM-1A-001-3 |



1 ELEVATION
 Scale: None

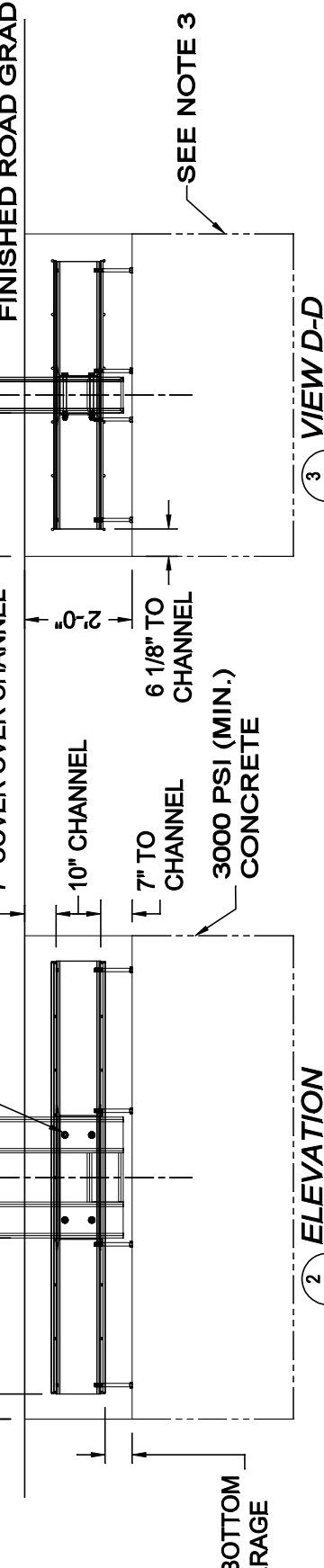
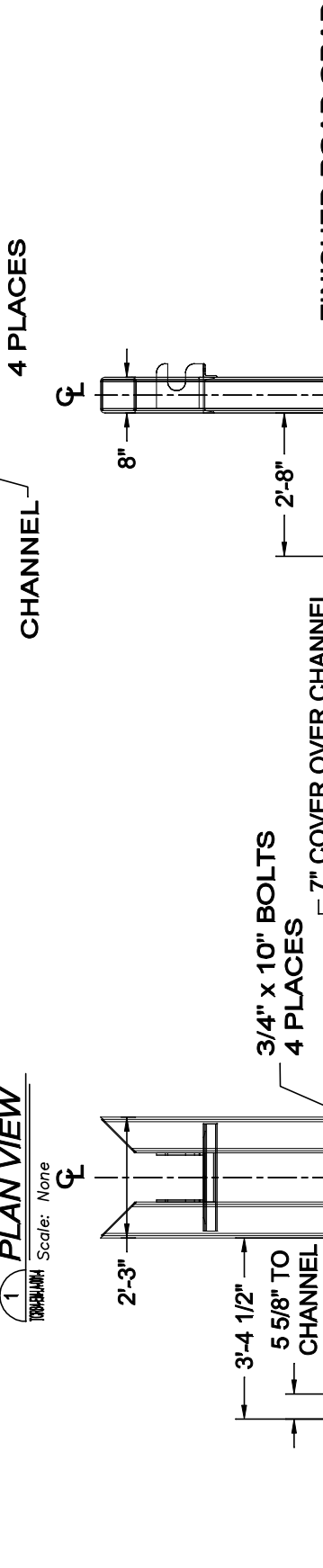
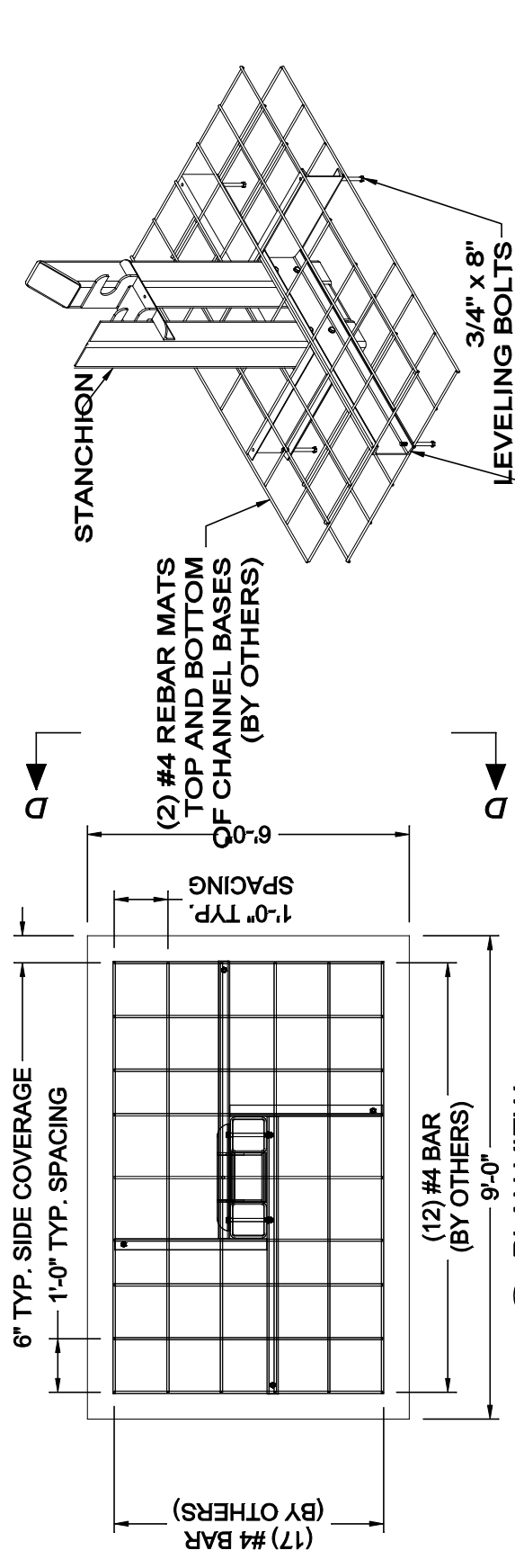
- NOTES:
- CLEAR OPENING IS MEASURED IN BETWEEN STANCHIONS (SQUARE TUBE TO SQUARE TUBE)

TCRB4-EM-LA-001-4
 DRAWING NUMBER:
 4 of 4
 SHEET NUMBER:
 TCRB4-EM-LA Up To 28 R2
 DIRECTOR/CAD FILE:

PROJECT:
 SUBJECT:
 CONTRACTOR:
 ARCHITECT/ENGINEER:

DRAWN BY: BGG
 CHECKED BY: JKT
 DATE: 6/9/25
 SCALE:
 DATE: 6/9/25
 AS NOTED
 REVISION LEVEL:
 R2

Tymetal
 SECURITY GATES & PERIMETER SOLUTIONS
 678 MILBURN AVENUE GREENWICH, N.Y. 12834
 PH: (800) 328-4283 - FX: (518) 892-9404



- NOTES:**
- TYMETAL RECOMMENDS ALL SITE CONDITIONS AND IN SITU SOILS BE REVIEWED BY A QUALIFIED ENGINEER. MINIMUM SOIL BEARING CAPACITY OF 940 PSF AND BACKFILL COMPACTION TO A DENSITY OF NOT LESS THAN 90% MAXIMUM DRY DENSITY ARE REQUIRED BY TYMETAL. TYMETAL WILL NOT BE RESPONSIBLE FOR FAILED GATE OPERATIONS CAUSED BY UNSTABLE SOIL CONDITIONS. PROJECT SPECIFIC SOIL CAPACITY AND COMPACTION REQUIREMENTS WHEN GREATER THAN SPECIFIED BY TYMETAL SUPERSEDE TYMETAL REQUIREMENTS. PLEASE CONSULT WITH YOUR PROJECT CIVIL ENGINEER FOR GUIDANCE.
 - FOUNDATIONS SHOWN ARE BASED ON AVERAGE SOIL AND SITE CONDITIONS. FOUNDATIONS MUST BE IN ACCORDANCE WITH ALL LOCAL CODES, AND SHOULD BE REVIEWED BY A LOCAL ENGINEER. FOUNDATION DESIGNS ARE NOT BY TYMETAL.
 - EXTENDED FOOTINGS REQUIRED IN AREAS WHERE FROST LINE IS BELOW FOUNDATIONS.