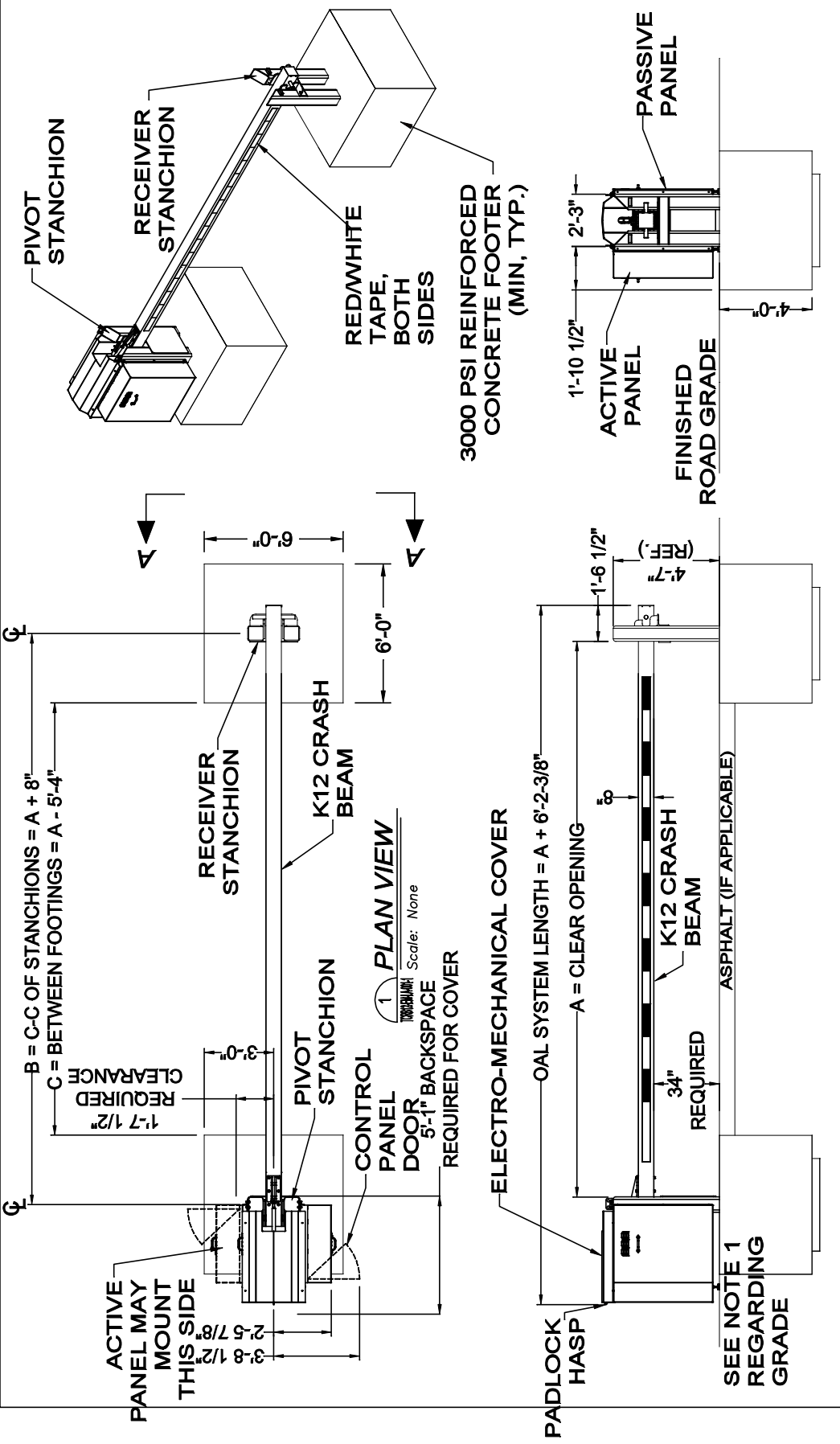


REVISION LEVEL:	R2
SCALE:	As Noted
DATE:	6/9/25
CHECKED BY:	JKT
DATE:	6/9/25
DRAWN BY:	BGG

PROJECT:	Tymetal TCRB-12 Electro-Mechanical Crash Beam
SUBJECT:	
CONTRACTOR:	
ARCHITECT/ENGINEER:	

DIRECTOR/CAD FILE:	TCRB12EMLA Up To 24 R2
SHEET NUMBER:	1 of 4
DRAWING NUMBER:	TCRB12EMLA-001-1



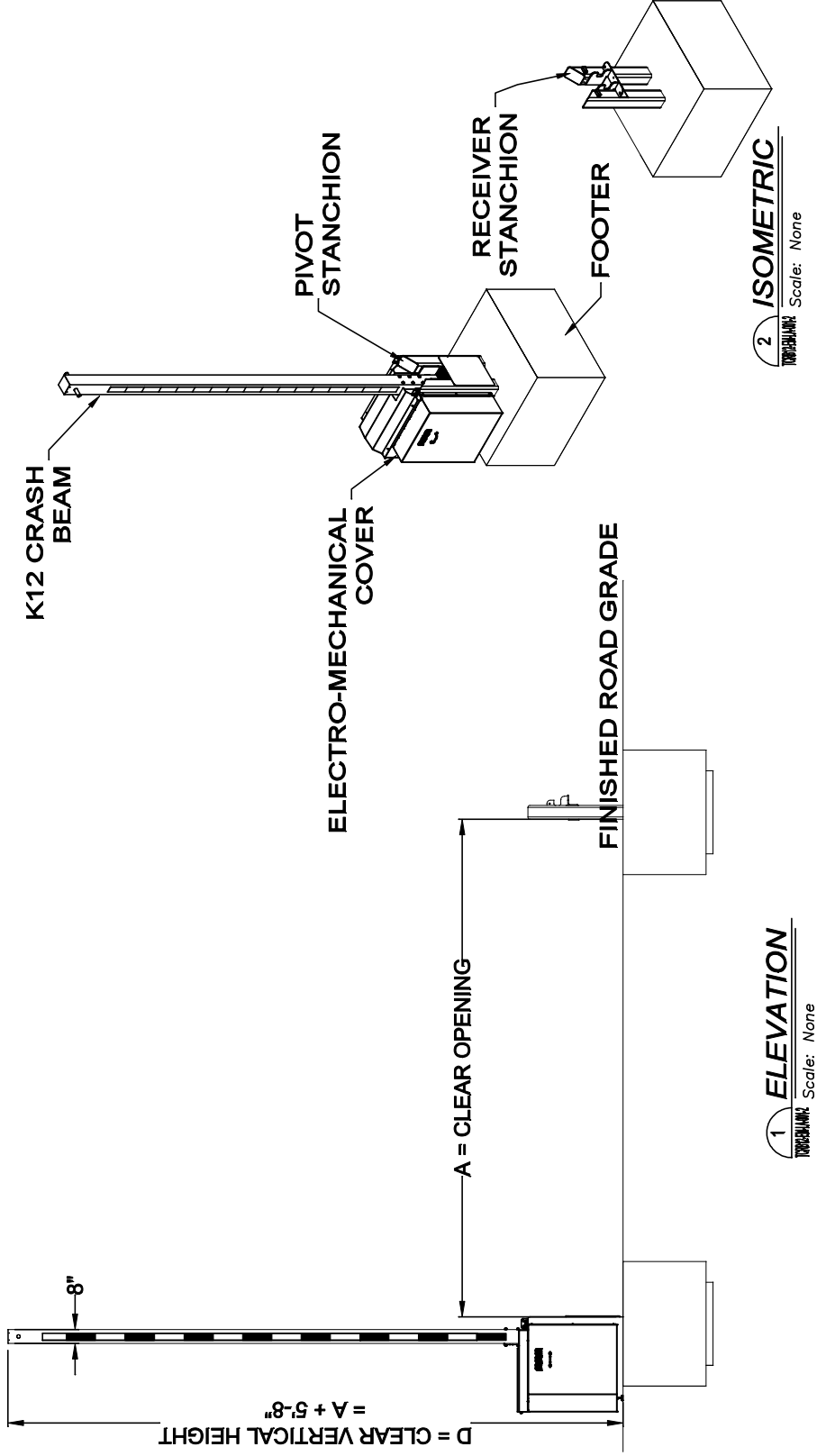
CRITICAL DIMENSION CHART	
A	CLEAR OPENING 22' MAX
B	C-C STANCHIONS
C	BETWEEN FOOTINGS
D	CLEAR VERTICAL HEIGHT

- NOTES:
- GRADE ELEVATION MUST SLOPE AWAY FROM PIVOT STANCHION TO PREVENT ICE/WATER BUILDUP.
  - STANCHIONS ARE COATED WITH ZINC ENRICHED PRIMER AND PAINTED BLACK.
  - CRASH BEAM IS POWDER COATED WHITE WITH REFLECTIVE TRAFFIC/VEHICULAR TAPE, RED AND WHITE, ALTERNATING, WEATHERPROOF. TAPE WILL BE FHWA - MUTCD COMPLIANT; BY TYMETAL, BOTH INBOUND AND OUTBOUND SIDES.

**Tymetal**  
 SECURITY GATES & PERIMETER SOLUTIONS  
 678 WILBUR AVENUE GREENWICH, N.Y. 12834  
 PH: (800) 328-4283 - FX: (518) 692-9404

REVISION LEVEL: <b>R2</b>
As Noted
SCALE:
DATE: 6/9/25
CHECKED BY: JKT
DATE: 6/9/25
DRAWN BY: BGG

PROJECT:	ARCHITECT/ENGINEER:
SUBJECT:	CONTRACTOR:
<b>Electro-Mechanical Crash Beam</b>	
SHEET NUMBER:	DRAWING NUMBER:
<b>2 of 4</b>	
DIRECTORY/CAD FILE:	TORR12-EM-LA-001-2



**1 ELEVATION**  
 Scale: None

**2 ISOMETRIC**  
 Scale: None

**NOTES:**  
 1. TCRB BARRIER PRECAUTIONS: TYMETAL DOES NOT PROVIDE TRAFFIC OR SAFETY ENGINEERING SERVICES. VEHICLES AS WELL AS PEDESTRIANS MUST BE WARNED AS TO THE BARRIER'S PRESENCE AND OPERATION. THE OWNER/OPERATOR (END USER) OR FACILITY ARCHITECT SELECTING THIS CRASH BARRIER SHALL ASSUME RESPONSIBILITY FOR PROVIDING TRAFFIC AND SAFETY ENGINEERING, INCLUDING ALL NECESSARY SAFETY FEATURES TO BE USED AT EACH BARRIER LOCATION, INCLUDING, BUT NOT LIMITED TO: SIDEWALKS FOR PEDESTRIAN TRAFFIC, SUFFICIENT ROADWAY LIGHTING, CAUTION SIGNAGE, TRAFFIC LIGHTS, AUDIBLE WARNING ALERTS, SECONDARY TRAFFIC CONTROL DEVICES, GUARD/CONTROL BOOTHS.

REVISION LEVEL: <b>R2</b>
SCALE: <b>As Noted</b>
DATE: <b>6/9/25</b>
CHECKED BY: <b>JKT</b>
DATE: <b>6/9/25</b>
DRAWN BY: <b>BGG</b>

ARCHITECT/ENGINEER:	
CONTRACTOR:	
SUBJECT: <b>Foundation Details</b>	
PROJECT:	

DIRECTOR/CAD FILE: TGRB12EMLA Up To 24 R2
SHEET NUMBER: <b>3 of 4</b>
DRAWING NUMBER: TGRB12EMLA-001-3



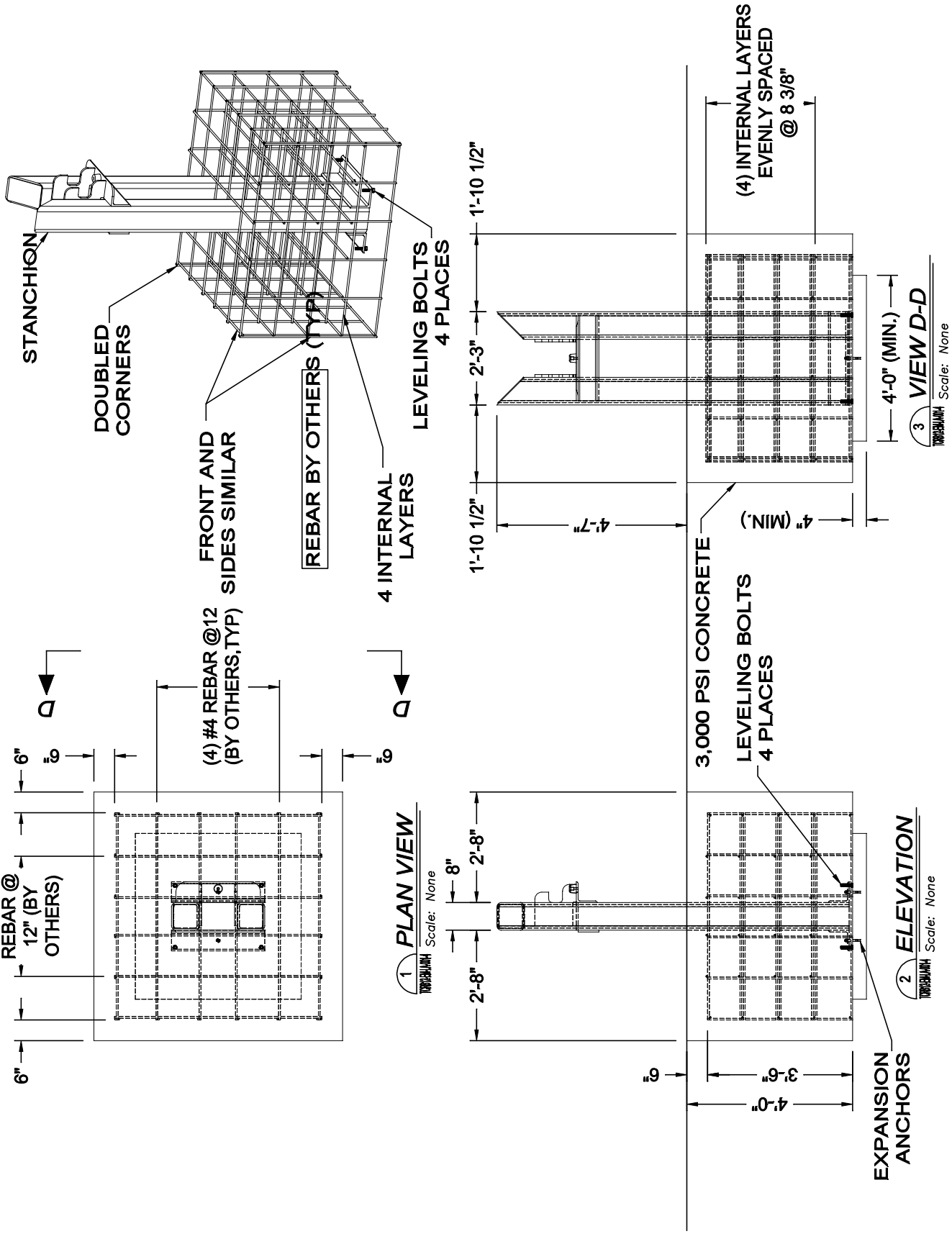
**1**  
**ELEVATION**  
 Scale: None

- NOTES:**  
 1. CLEAR OPENING IS MEASURED IN BETWEEN STANCHIONS (SQ. TUBE TO SQ. TUBE)

DRAWN BY:	BGG
DATE:	6/9/25
CHECKED BY:	JKT
DATE:	6/9/25
SCALE:	As Noted
REVISION LEVEL:	R2

PROJECT:	TCRB-EM-LA Stanchion Rebar Details
SUBJECT:	TCRB-EM-LA Stanchion Rebar Details
CONTRACTOR:	
ARCHITECT/ENGINEER:	

DIRECTORY CAD FILE:	TCRB12-EM-LA Up to 24 R2
SHEET NUMBER:	4 of 4
DRAWING NUMBER:	TCRB12-EM-LA-001-4



- NOTES:
1. TYMETAL RECOMMENDS ALL SITE CONDITIONS AND IN SITU SOILS BE REVIEWED BY A QUALIFIED ENGINEER. MINIMUM SOIL BEARING CAPACITY OF 940 PSF AND BACKFILL COMPACTION TO A DENSITY OF NOT LESS THAN 90% MAXIMUM DRY DENSITY ARE REQUIRED BY TYMETAL. TYMETAL WILL NOT BE RESPONSIBLE FOR FAILED GATE OPERATIONS CAUSED BY UNSTABLE SOIL CONDITIONS. PROJECT SPECIFIC SOIL CAPACITY AND COMPACTION REQUIREMENTS WHEN GREATER THAN SPECIFIED BY TYMETAL SUPERSEDE TYMETAL REQUIREMENTS, PLEASE CONSULT WITH YOUR PROJECT CIVIL ENGINEER FOR GUIDANCE.
  2. FOUNDATIONS SHOWN ARE BASED ON AVERAGE SOIL AND SITE CONDITIONS. FOUNDATIONS MUST BE IN ACCORDANCE WITH ALL LOCAL CODES, AND SHOULD BE REVIEWED BY A LOCAL ENGINEER. FOUNDATION DESIGNS ARE NOT BY TYMETAL.
  3. EXTENDED FOOTINGS REQUIRED IN AREAS WHERE FROST LINE IS BELOW FOUNDATIONS.